

## ARG21043 anti-CD49d / LPAM1 / Integrin alpha 4 antibody [DATK32] (Biotin)

Package: 100 µg  
Store at: 4°C

### Summary

Product Description	Biotin-conjugated Rat Monoclonal antibody [DATK32] recognizes CD49d / LPAM1 / Integrin alpha 4
Tested Reactivity	Ms
Tested Application	BL, FACS, IHC-Fr
Specificity	Mouse LPAM-1. The clone DATK32 recognizes a conformational epitope on the heterodimer.
Host	Rat
Clonality	Monoclonal
Clone	DATK32
Isotype	IgG2a, kappa
Target Name	CD49d / LPAM1 / Integrin alpha 4
Species	Mouse
Immunogen	AKR/Cum mouse T lymphoma cell line TK-1
Conjugation	Biotin
Alternate Names	CD49 antigen-like family member D; VLA-4 subunit alpha; CD49D; Integrin alpha-IV; CD antigen CD49d; Integrin alpha-4; IA4

### Application Instructions

Application table	Application	Dilution
	BL	Assay-dependent
	FACS	< 1 µg/10 <sup>6</sup> cells
	IHC-Fr	Assay-dependent
Application Note	* The dilutions indicate recommended starting dilutions and the optimal dilutions or concentrations should be determined by the scientist.	

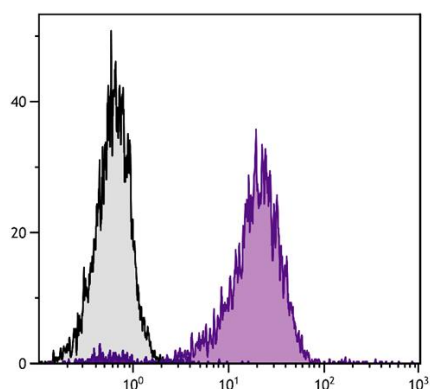
### Properties

Form	Liquid
Buffer	PBS and 0.1% Sodium azide.
Preservative	0.1% Sodium azide
Concentration	0.5 mg/ml
Storage instruction	Aliquot and store in the dark at 2-8°C. Keep protected from prolonged exposure to light. Avoid repeated freeze/thaw cycles. Suggest spin the vial prior to opening. The antibody solution should be gently mixed before use.
Note	For laboratory research only, not for drug, diagnostic or other use.

## Bioinformation

Database links	<a href="#">GeneID: 16401 Mouse</a> <a href="#">Swiss-port # Q00651 Mouse</a>
Gene Symbol	ITGA4
Gene Full Name	integrin alpha 4
Background	The product of this gene belongs to the integrin alpha chain family of proteins. Integrins are heterodimeric integral membrane proteins composed of an alpha chain and a beta chain. This gene encodes an alpha 4 chain. Unlike other integrin alpha chains, alpha 4 neither contains an I-domain, nor undergoes disulfide-linked cleavage. Alpha 4 chain associates with either beta 1 chain or beta 7 chain. [provided by RefSeq, Jul 2008]
Function	Integrins alpha-4/beta-1 (VLA-4) and alpha-4/beta-7 are receptors for fibronectin. They recognize one or more domains within the alternatively spliced CS-1 and CS-5 regions of fibronectin. They are also receptors for VCAM1. Integrin alpha-4/beta-1 recognizes the sequence Q-I-D-S in VCAM1. Integrin alpha-4/beta-7 is also a receptor for MADCAM1. It recognizes the sequence L-D-T in MADCAM1. On activated endothelial cells integrin VLA-4 triggers homotypic aggregation for most VLA-4-positive leukocyte cell lines. It may also participate in cytolytic T-cell interactions with target cells. [UniProt]
Calculated Mw	115 kDa
PTM	Phosphorylation on Ser-1027 inhibits PXN binding.

## Images



ARG21043 anti-CD49d / LPAM1 / Integrin alpha 4 antibody [DATK32] (Biotin) FACS image

Flow Cytometry: AKR/Cum Mouse T lymphocyte cell line TK-1 was stained with ARG21043 anti-CD49d / LPAM1 / Integrin alpha 4 antibody [DATK32] (Biotin) followed by Streptavidin (PE).