

## ARG21187 anti-CD45 antibody [LT40] (FITC)

Package: 100 µg  
Store at: 4°C

### Summary

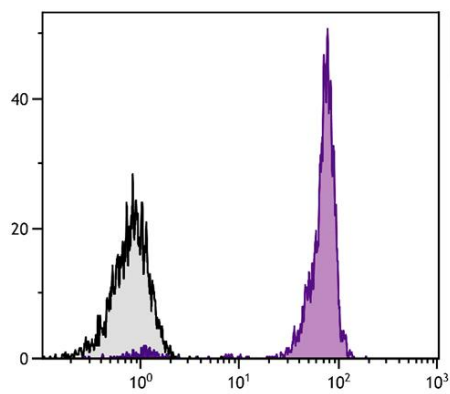
Product Description	FITC-conjugated Mouse Monoclonal antibody [LT40] recognizes CD45
Tested Reactivity	Chk
Tested Application	FACS, IHC-Fr, IHC-P, IHC-Wmt
Specificity	The ability of The clone LT40 to discriminate the CD45 <sup>low</sup> subpopulation provides a suitable marker for the CD3-CD4-CD8 <sup>low</sup> immediate precursors to the CD3-CD4+CD8 <sup>+</sup> thymocytes.
Host	Mouse
Clonality	Monoclonal
Clone	LT40
Isotype	IgM, kappa
Target Name	CD45
Species	Chicken
Immunogen	Chicken bursal lymphocytes
Conjugation	FITC

### Application Instructions

Application table	Application	Dilution
	FACS	< 1 µg/10 <sup>6</sup> cells
	IHC-Fr	Assay-dependent
	IHC-P	Assay-dependent
	IHC-Wmt	Assay-dependent
Application Note	* The dilutions indicate recommended starting dilutions and the optimal dilutions or concentrations should be determined by the scientist.	

### Properties

Form	Liquid
Buffer	PBS and 0.1% Sodium azide.
Preservative	0.1% Sodium azide
Concentration	0.5 mg/ml
Storage instruction	Aliquot and store in the dark at 2-8°C. Keep protected from prolonged exposure to light. Avoid repeated freeze/thaw cycles. Suggest spin the vial prior to opening. The antibody solution should be gently mixed before use.
Note	For laboratory research only, not for drug, diagnostic or other use.



ARG21187 anti-CD45 antibody [LT40] (FITC) FACS image

Flow Cytometry: Chicken peripheral blood lymphocytes stained with ARG21187 anti-CD45 antibody [LT40] (FITC).