

ARG21189 anti-CD45 antibody [LT40] (PE)

Package: 50 µg
Store at: 4°C

Summary

Product Description	PE-conjugated Mouse Monoclonal antibody [LT40] recognizes CD45
Tested Reactivity	Chk
Tested Application	FACS, IHC-Fr, IHC-P, IHC-Wmt
Specificity	The ability of The clone LT40 to discriminate the CD45 ^{low} subpopulation provides a suitable marker for the CD3-CD4-CD8 ^{low} immediate precursors to the CD3-CD4+CD8 ⁺ thymocytes.
Host	Mouse
Clonality	Monoclonal
Clone	LT40
Isotype	IgM, kappa
Target Name	CD45
Species	Chicken
Immunogen	Chicken bursal lymphocytes
Conjugation	PE

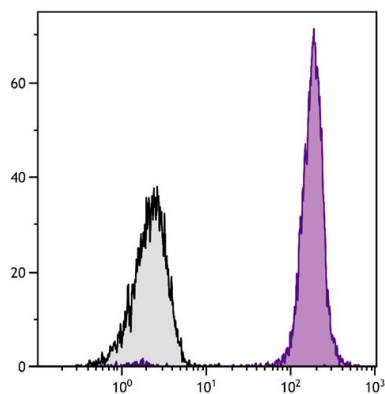
Application Instructions

Application table	Application	Dilution
	FACS	< 0.2 µg/10 ⁶ cells
	IHC-Fr	Assay-dependent
	IHC-P	Assay-dependent
	IHC-Wmt	Assay-dependent
Application Note	* The dilutions indicate recommended starting dilutions and the optimal dilutions or concentrations should be determined by the scientist.	

Properties

Form	Liquid
Buffer	PBS, 0.1% Sodium azide and Sucrose.
Preservative	0.1% Sodium azide
Stabilizer	Sucrose
Concentration	0.1 mg/ml
Storage instruction	Aliquot and store in the dark at 2-8°C. Keep protected from prolonged exposure to light. Avoid repeated freeze/thaw cycles. Suggest spin the vial prior to opening. The antibody solution should be gently mixed before use.

Images



ARG21189 anti-CD45 antibody [LT40] (PE) FACS image

Flow Cytometry: Chicken peripheral blood lymphocytes stained with ARG21189 anti-CD45 antibody [LT40] (PE).