

ARG21207 anti-MHC Class II antibody [2G11] (PE)

Package: 50 µg
Store at: 4°C

Summary

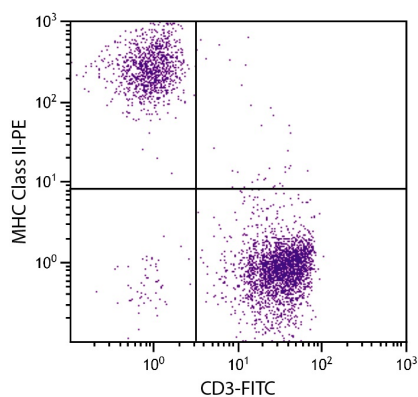
| | |
|---------------------|--|
| Product Description | PE-conjugated Mouse Monoclonal antibody [2G11] recognizes MHC Class II |
| Tested Reactivity | Chk |
| Tested Application | EM, FACS, IHC-Fr, Puri |
| Specificity | Chicken MHC class II β-chain. |
| Host | Mouse |
| Clonality | Monoclonal |
| Clone | 2G11 |
| Isotype | IgG1, kappa |
| Target Name | MHC Class II |
| Species | Chicken |
| Conjugation | PE |

Application Instructions

| Application table | Application | Dilution |
|-------------------|--|--------------------------------|
| | EM | Assay-dependent |
| | FACS | < 0.2 µg/10 ⁶ cells |
| | IHC-Fr | Assay-dependent |
| | Puri | Assay-dependent |
| Application Note | * The dilutions indicate recommended starting dilutions and the optimal dilutions or concentrations should be determined by the scientist. | |

Properties

| | |
|---------------------|--|
| Form | Liquid |
| Buffer | PBS, 0.1% Sodium azide and Sucrose. |
| Preservative | 0.1% Sodium azide |
| Stabilizer | Sucrose |
| Concentration | 0.1 mg/ml |
| Storage instruction | Aliquot and store in the dark at 2-8°C. Keep protected from prolonged exposure to light. Avoid repeated freeze/thaw cycles. Suggest spin the vial prior to opening. The antibody solution should be gently mixed before use. |
| Note | For laboratory research only, not for drug, diagnostic or other use. |



ARG21207 anti-MHC Class II antibody [2G11] (PE) FACS image

Flow Cytometry: Chicken peripheral blood mononuclear cells stained with [ARG21207](#) anti-MHC Class II antibody [2G11] (PE) and [ARG21151](#) anti-CD3 epsilon antibody [CT-3] (FITC).