

## ARG21231 anti-Bu1a + Bu1b antibody [AV20] (PE)

Package: 50 µg  
Store at: 4°C

### Summary

Product Description	PE-conjugated Mouse Monoclonal antibody [AV20] recognizes Bu1a + Bu1b
Tested Reactivity	Chk
Tested Application	FACS, ICC/IF, IHC-Fr, IHC-P
Specificity	The clone AV20 recognizes a monomorphic determinant on the Bu-1 B cell-associated alloantigens of both RPL 6(3) (Bu-1a) and 7(2) (Bu-1b) lines of inbred chickens. The antibody also identifies B cells in partially inbred birds. The clone AV20 does not cross react with turkey cells when analyzed by flow cytometry.
Host	Mouse
Clonality	Monoclonal
Clone	AV20
Isotype	IgG1, kappa
Target Name	Bu1a + Bu1b
Species	Chicken
Immunogen	Chicken peripheral blood lymphocytes and splenocytes
Conjugation	PE

### Application Instructions

Application table	Application	Dilution
	FACS	< 0.2 µg/10 <sup>6</sup> cells
	ICC/IF	Assay-dependent
	IHC-Fr	Assay-dependent
	IHC-P	Assay-dependent
Application Note	* The dilutions indicate recommended starting dilutions and the optimal dilutions or concentrations should be determined by the scientist.	

### Properties

Form	Liquid
Buffer	PBS, 0.1% Sodium azide and Sucrose.
Preservative	0.1% Sodium azide
Stabilizer	Sucrose
Concentration	0.1 mg/ml
Storage instruction	Aliquot and store in the dark at 2-8°C. Keep protected from prolonged exposure to light. Avoid repeated freeze/thaw cycles. Suggest spin the vial prior to opening. The antibody solution should be

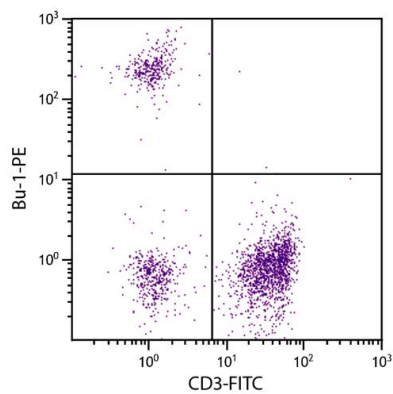
gently mixed before use.

#### Note

For laboratory research only, not for drug, diagnostic or other use.

## Images

---



ARG21231 anti-Bu1a + Bu1b antibody [AV20] (PE) FACS image

Flow Cytometry: Chicken peripheral blood lymphocytes stained with ARG21231 anti-Bu1a + Bu1b antibody [AV20] (PE) and [ARG21151](#) anti-CD3 antibody [CT-3] (FITC).