

ARG21246 anti-Monocyte + Macrophage antibody [KUL01] (PE)

Package: 50 µg
Store at: 4°C

Summary

Product Description	PE-conjugated Mouse Monoclonal antibody [KUL01] recognizes Monocyte + Macrophage
Tested Reactivity	Chk
Tested Application	FACS, ICC/IF, IHC-Fr, IHC-P
Specificity	The clone KUL01 is useful in the study of the development, distribution, function, and ontogeny of the mononuclear phagocyte system (MPS) of the chicken by exclusively recognizing the cells of the MPS. It identifies chicken monocytes and macrophages as well as interdigitating cells and activated microglia cells. This antibody does not react with B (Bu-1+) or T (CD3+) lymphocytes.
Host	Mouse
Clonality	Monoclonal
Clone	KUL01
Isotype	IgG1, kappa
Target Name	Monocyte + Macrophage
Species	Chicken
Immunogen	Chicken peripheral blood mononuclear cell leukocytes
Conjugation	PE

Application Instructions

Application table	Application	Dilution
	FACS	< 0.2 µg/10 ⁶ cells
	ICC/IF	Assay-dependent
	IHC-Fr	Assay-dependent
	IHC-P	Assay-dependent
Application Note	* The dilutions indicate recommended starting dilutions and the optimal dilutions or concentrations should be determined by the scientist.	

Properties

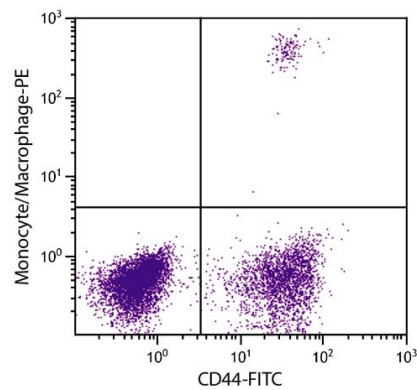
Form	Liquid
Buffer	PBS, 0.1% Sodium azide and Sucrose.
Preservative	0.1% Sodium azide
Stabilizer	Sucrose
Concentration	0.1 mg/ml
Storage instruction	Aliquot and store in the dark at 2-8°C. Keep protected from prolonged exposure to light. Avoid repeated freeze/thaw cycles. Suggest spin the vial prior to opening. The antibody solution should be

gently mixed before use.

Note

For laboratory research only, not for drug, diagnostic or other use.

Images



ARG21246 anti-Monocyte + Macrophage antibody [KUL01] (PE) FACS image

Flow Cytometry: Chicken peripheral blood monocytes stained with ARG21246 anti-Monocyte + Macrophage antibody [KUL01] (PE) and [ARG21233](#) anti-CD44 antibody [AV6] (FITC).