

## ARG21278 anti-CD20 antibody [B-Ly1] (PE-Cyanine 5)

Package: 50 tests  
Store at: 4°C

### Summary

Product Description	PE-Cyanine 5-conjugated Mouse Monoclonal antibody [B-Ly1] recognizes CD20
Tested Reactivity	Hu
Tested Application	BL, FACS, IHC-Fr, IHC-P
Specificity	Human CD20
Host	Mouse
Clonality	Monoclonal
Clone	B-Ly1
Isotype	IgG1, kappa
Target Name	CD20
Species	Human
Conjugation	PE-Cyanine 5
Alternate Names	Bp35; LEU-16; B-lymphocyte surface antigen B1; B-lymphocyte antigen CD20; CD20; S7; CD antigen CD20; Leukocyte surface antigen Leu-16; B1; CVID5; Membrane-spanning 4-domains subfamily A member 1; MS4A2

### Application Instructions

Application table	Application	Dilution
	BL	Assay-dependent
	FACS	10 µl/10 <sup>6</sup> cells
	IHC-Fr	Assay-dependent
	IHC-P	Assay-dependent
Application Note	* The dilutions indicate recommended starting dilutions and the optimal dilutions or concentrations should be determined by the scientist.	

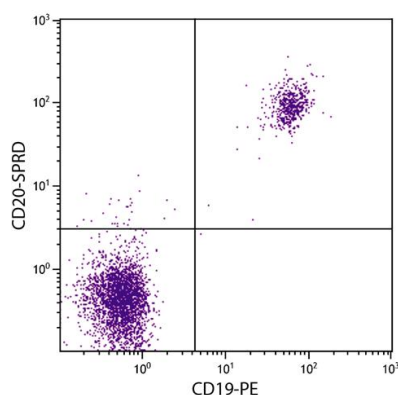
### Properties

Form	Liquid
Buffer	PBS, 0.1% Sodium azide and Sucrose.
Preservative	0.1% Sodium azide
Stabilizer	Sucrose
Storage instruction	Aliquot and store in the dark at 2-8°C. Keep protected from prolonged exposure to light. Avoid repeated freeze/thaw cycles. Suggest spin the vial prior to opening. The antibody solution should be gently mixed before use.

## Bioinformation

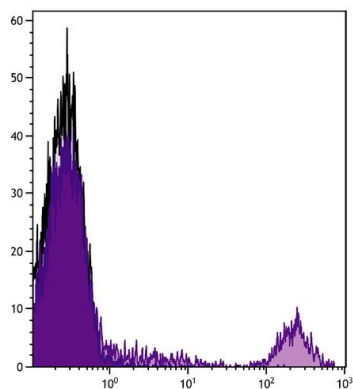
Database links	<a href="#">GeneID: 931 Human</a> <a href="#">Swiss-port # P11836 Human</a>
Gene Symbol	MS4A1
Gene Full Name	membrane-spanning 4-domains, subfamily A, member 1
Background	<p>CD20 is a member of the membrane-spanning 4A gene family. Members of this nascent protein family are characterized by common structural features and similar intron/exon splice boundaries and display unique expression patterns among hematopoietic cells and nonlymphoid tissues. This gene encodes a B-lymphocyte surface molecule which plays a role in the development and differentiation of B-cells into plasma cells. This family member is localized to 11q12, among a cluster of family members. Alternative splicing of this gene results in two transcript variants which encode the same protein. [provided by RefSeq, Jul 2008]</p>
Function	<p>CD20 is a B-lymphocyte-specific membrane protein. It plays a role in the regulation of cellular calcium influx necessary for the development, differentiation, and activation of B-lymphocytes (PubMed:3925015, PubMed:7684739, PubMed:12920111). Functions as a store-operated calcium (SOC) channel component promoting calcium influx after activation by the B-cell receptor/BCR (PubMed:7684739, PubMed:12920111, PubMed:18474602). [UniProt]</p>
Highlight	<p>Related products:  <a href="#">CD20 antibodies</a>; <a href="#">CD20 ELISA Kits</a>; <a href="#">CD20 Duos / Panels</a>; <a href="#">Anti-Mouse IgG secondary antibodies</a>;            Related news:  <a href="#">New antibody panels and duos for Tumor immune microenvironment</a>  <a href="#">Tumor-Infiltrating Lymphocytes (TILs)</a>  <a href="#">Exploring Antiviral Immune Response</a></p>
Research Area	Cancer antibody; Developmental Biology antibody; Immune System antibody; B cell Marker antibody; Immature B Cell Marker antibody; Inflammatory Cell Marker antibody; Tumor-infiltrating Lymphocyte Study antibody
Calculated Mw	33 kDa
PTM	Phosphorylated. Might be functionally regulated by protein kinase(s).

## Images



ARG21278 anti-CD20 antibody [B-Ly1] (PE-Cyanine 5) FACS image

Flow Cytometry: Human peripheral blood lymphocytes stained with ARG21278 anti-CD20 antibody [B-Ly1] (PE-Cyanine 5) and [ARG21260](#) anti-CD19 antibody [SJ25-C1] (PE).



ARG21278 anti-CD20 antibody [B-Ly1] (PE-Cyanine 5) FACS image

Flow Cytometry: Human peripheral blood lymphocytes stained with ARG21278 anti-CD20 antibody [B-Ly1] (PE-Cyanine 5).