

ARG21332 anti-CD14 antibody [UCHM-1] (PE)

Package: 50 tests
Store at: 4°C

Summary

Product Description	PE-conjugated Mouse Monoclonal antibody [UCHM-1] recognizes CD14
Tested Reactivity	Hu
Tested Application	BL, Depletion, FACS, ICC/IF, IHC-Fr
Specificity	Human/Cynomolgus CD14.
Host	Mouse
Clonality	Monoclonal
Clone	UCHM-1
Isotype	IgG2a, kappa
Target Name	CD14
Species	Human
Immunogen	Thymocytes and peripheral blood lymphocytes from a remission AML patient
Conjugation	PE
Alternate Names	CD antigen CD14; Myeloid cell-specific leucine-rich glycoprotein; Monocyte differentiation antigen CD14

Application Instructions

Application table	Application	Dilution
	BL	Assay-dependent
	Depletion	Assay-dependent
	FACS	10 µl/10 ⁶ cells
	ICC/IF	Assay-dependent
	IHC-Fr	Assay-dependent

Application Note * The dilutions indicate recommended starting dilutions and the optimal dilutions or concentrations should be determined by the scientist.

Properties

Form	Liquid
Buffer	PBS, 0.1% Sodium azide and Sucrose.
Preservative	0.1% Sodium azide
Stabilizer	Sucrose
Storage instruction	Aliquot and store in the dark at 2-8°C. Keep protected from prolonged exposure to light. Avoid repeated freeze/thaw cycles. Suggest spin the vial prior to opening. The antibody solution should be

gently mixed before use.

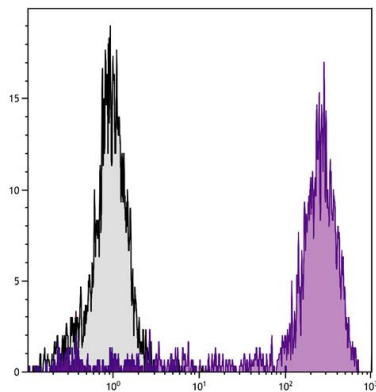
Note

For laboratory research only, not for drug, diagnostic or other use.

Bioinformation

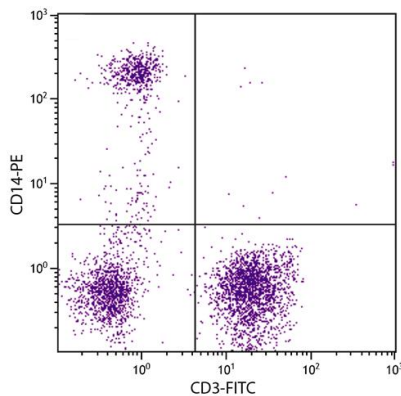
Database links	GeneID: 929 Human Swiss-port # P08571 Human
Gene Symbol	CD14
Gene Full Name	CD14 molecule
Background	The protein encoded by this gene is a surface antigen that is preferentially expressed on monocytes/macrophages. It cooperates with other proteins to mediate the innate immune response to bacterial lipopolysaccharide. Alternative splicing results in multiple transcript variants encoding the same protein. [provided by RefSeq, Mar 2010]
Function	In concert with LBP, binds to monomeric lipopolysaccharide and delivers it to the MD-2/TLR4 complex, thereby mediating the innate immune response to bacterial lipopolysaccharide (LPS). Acts via MyD88, TIRAP and TRAF6, leading to NF-kappa-B activation, cytokine secretion and the inflammatory response. Up-regulates cell surface molecules, including adhesion molecules. [UniProt]
Research Area	Developmental Biology antibody; Immune System antibody; General Lymphocyte Marker Study antibody; Macrophages and neutrophils antibody
Calculated Mw	40 kDa
PTM	N- and O- glycosylated. O-glycosylated with a core 1 or possibly core 8 glycan.

Images



ARG21332 anti-CD14 antibody [UCHM-1] (PE) FACS image

Flow Cytometry: Human peripheral blood monocytes stained with ARG21332 anti-CD14 antibody [UCHM-1] (PE).



ARG21332 anti-CD14 antibody [UCHM-1] (PE) FACS image

Flow Cytometry: Human peripheral blood monocytes and lymphocytes stained with ARG21332 anti-CD14 antibody [UCHM-1] (PE) and [ARG62806](#) anti-CD3 antibody [UCHT1] (FITC).