

ARG21506 anti-MMP1 antibody [SB12e]

Package: 50 µg
Store at: -20°C

Summary

Product Description	Mouse Monoclonal antibody [SB12e] recognizes MMP1
Tested Reactivity	Hu, Rb
Tested Application	ELISA, ICC/IF, IHC-Fr, IHC-P, WB
Specificity	Human/Rabbit MMP1.
Host	Mouse
Clonality	Monoclonal
Clone	SB12e
Isotype	IgG2b, kappa
Target Name	MMP1
Species	Human
Immunogen	Recombinant full length MMP-1
Conjugation	Un-conjugated
Alternate Names	MMP-1; CLG; Fibroblast collagenase; Matrix metalloproteinase-1; CLGN; EC 3.4.24.7; Interstitial collagenase

Application Instructions

Application table	Application	Dilution
	ELISA	< 2 µg/ml
	ICC/IF	Assay-dependent
	IHC-Fr	Assay-dependent
	IHC-P	Assay-dependent
	WB	Assay-dependent

Application Note * The dilutions indicate recommended starting dilutions and the optimal dilutions or concentrations should be determined by the scientist.

Properties

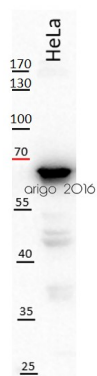
Form	Liquid
Buffer	BBS (pH 8.2)
Concentration	0.5 mg/ml
Storage instruction	For continuous use, store undiluted antibody at 2-8°C for up to a week. For long-term storage, aliquot and store at -20°C. Storage in frost free freezers is not recommended. Avoid repeated freeze/thaw cycles. Suggest spin the vial prior to opening. The antibody solution should be gently mixed before use.

Note For laboratory research only, not for drug, diagnostic or other use.

Bioinformation

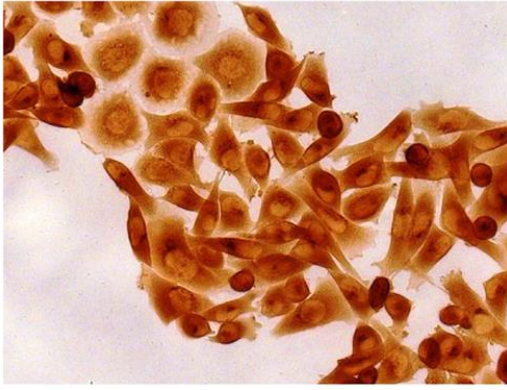
Database links	GeneID: 100009110 Rabbit GeneID: 4312 Human Swiss-port # P03956 Human Swiss-port # P13943 Rabbit
Gene Symbol	MMP1
Gene Full Name	matrix metalloproteinase 1
Background	Proteins of the matrix metalloproteinase (MMP) family are involved in the breakdown of extracellular matrix in normal physiological processes, such as embryonic development, reproduction, and tissue remodeling, as well as in disease processes, such as arthritis and metastasis. Most MMP's are secreted as inactive proproteins which are activated when cleaved by extracellular proteinases. This gene encodes a secreted enzyme which breaks down the interstitial collagens, types I, II, and III. The gene is part of a cluster of MMP genes which localize to chromosome 11q22.3. Alternative splicing results in multiple transcript variants.[provided by RefSeq, Mar 2009]
Function	Cleaves collagens of types I, II, and III at one site in the helical domain. Also cleaves collagens of types VII and X. In case of HIV infection, interacts and cleaves the secreted viral Tat protein, leading to a decrease in neuronal Tat's mediated neurotoxicity. [UniProt]
Calculated Mw	54 kDa
PTM	Undergoes autolytic cleavage to two major forms (22 kDa and 27 kDa). A minor form (25 kDa) is the glycosylated form of the 22 kDa form. The 27 kDa form has no activity while the 22/25 kDa form can act as activator for collagenase. Tyrosine phosphorylated in platelets by PKDCC/VLK.

Images



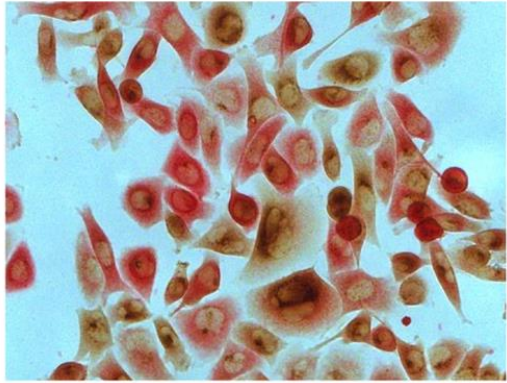
ARG21506 anti-MMP-1 antibody [SB12e] WB image

Western blot: 20 µg of HeLa cell lysates stained with ARG21506 anti-MMP-1 antibody [SB12e] at 1:500 dilution.



ARG21506 anti-MMP1 antibody [SB12e] ICC image

Immunocytochemistry: Human pancreatic carcinoma cell line MIA PaCa-2 stained with ARG21506 anti-MMP1 antibody [SB12e], followed by [ARG21894](#) Goat anti-Mouse IgG2b antibody (HRP) (pre-adsorbed), DAB and mounted with Fluoromount-G.



ARG21506 anti-MMP1 antibody [SB12e] ICC image

Immunocytochemistry: Human pancreatic carcinoma cell line MIA PaCa-2 stained with [ARG22307](#) anti-Cytokeratin 8 antibody [SB37b] and ARG21506 anti-MMP1 antibody [SB12e] followed by [ARG23804](#) Goat anti-Mouse IgG2a antibody (AP) (pre-adsorbed) and [ARG21894](#) Goat anti-Mouse IgG2b antibody (HRP) (pre-adsorbed), Red AP, DAB and mounted with Fluoromount-G.
