

ARG21518 Goat anti-Mouse IgM antibody (FITC), pre-adsorbed

Package: 500 µg
Store at: 4°C

Summary

Product Description	FITC-conjugated Goat Polyclonal antibody recognizes Mouse IgM
Tested Reactivity	Ms
Tested Application	EM, FACS, FLISA, ICC/IF, IHC-Fr, WB
Specificity	Reacts with the heavy chain of mouse IgM
Host	Goat
Clonality	Polyclonal
Isotype	IgG
Target Name	IgM
Species	Mouse
Conjugation	FITC

Application Instructions

Pre Adsorbed Mouse IgG and IgA; Human immunoglobulins and pooled sera.

Application table

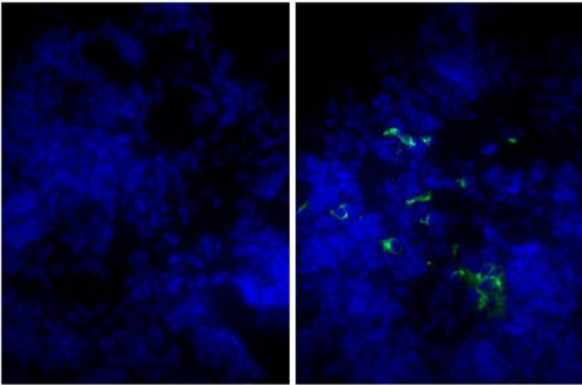
Application	Dilution
EM	Assay-dependent
FACS	< 1 ug/10 ⁶ cells
FLISA	1:100 - 1:400
ICC/IF	Assay-dependent
IHC-Fr	Assay-dependent
WB	Assay-dependent

Application Note * The dilutions indicate recommended starting dilutions and the optimal dilutions or concentrations should be determined by the scientist.

Properties

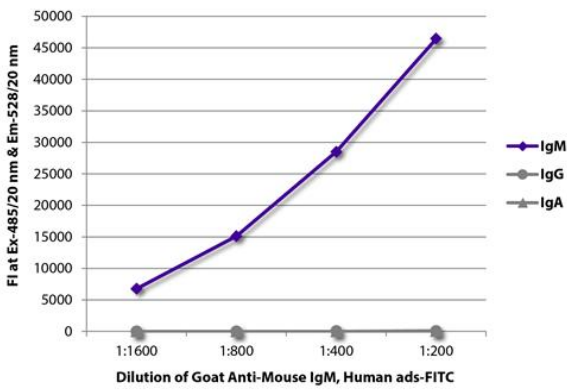
Form	Liquid
Purification	Affinity purification with immunogen.
Buffer	PBS and 0.1% Sodium azide.
Preservative	0.1% Sodium azide
Concentration	1 mg/ml
Storage instruction	Aliquot and store in the dark at 2-8°C. Keep protected from prolonged exposure to light. Avoid repeated freeze/thaw cycles. Suggest spin the vial prior to opening. The antibody solution should be gently mixed before use.

Images



ARG21518 Goat anti-Mouse IgM antibody (FITC) (pre-adsorbed) IHC-Fr image

Immunohistochemistry: Frozen section of Mouse lymph node tissue stained with [ARG20659](#) Goat IgG Isotype Control antibody (FITC) (left) and ARG21518 Goat anti-Mouse IgM antibody (FITC) (pre-adsorbed) (right) followed by DAPI.



ARG21518 Goat anti-Mouse IgM antibody (FITC) (pre-adsorbed) FLISA image

FLISA: The plate was coated with purified Mouse IgM, IgG and IgA. Immunoglobulins were detected with serially diluted ARG21518 Goat anti-Mouse IgM antibody (FITC) (pre-adsorbed).