

ARG21522 Goat anti-Mouse IgM antibody (Texas Red), pre-adsorbed

Package: 500 µg
Store at: 4°C

Summary

Product Description	Texas Red-conjugated Goat Polyclonal antibody recognizes Mouse IgM
Tested Reactivity	Ms
Tested Application	EM, FACS, FLISA, ICC/IF, IHC-Fr, WB
Specificity	Reacts with the heavy chain of mouse IgM
Host	Goat
Clonality	Polyclonal
Isotype	IgG
Target Name	IgM
Species	Mouse
Conjugation	Texas Red

Application Instructions

Pre Adsorbed Mouse IgG and IgA; Human immunoglobulins and pooled sera.

Application table

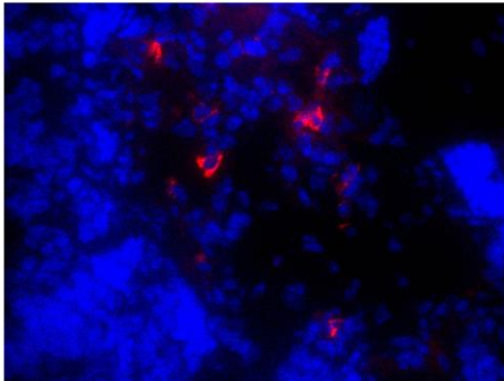
Application	Dilution
EM	Assay-dependent
FACS	Assay-dependent
FLISA	1:100 - 1:400
ICC/IF	Assay-dependent
IHC-Fr	Assay-dependent
WB	Assay-dependent

Application Note * The dilutions indicate recommended starting dilutions and the optimal dilutions or concentrations should be determined by the scientist.

Properties

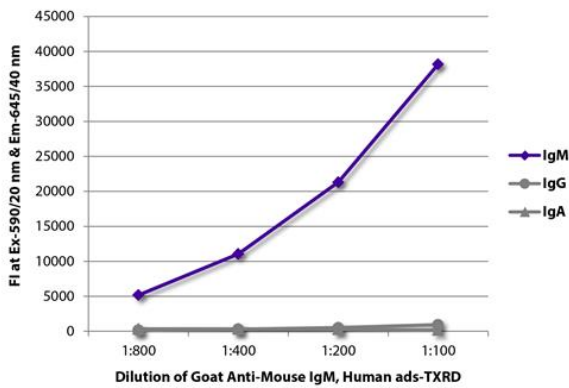
Form	Liquid
Purification	Affinity purification with immunogen.
Buffer	PBS and 0.1% Sodium azide.
Preservative	0.1% Sodium azide
Concentration	1 mg/ml
Storage instruction	Aliquot and store in the dark at 2-8°C. Keep protected from prolonged exposure to light. Avoid repeated freeze/thaw cycles. Suggest spin the vial prior to opening. The antibody solution should be gently mixed before use.

Images



ARG21522 Goat anti-Mouse IgM antibody (Texas Red) (pre-adsorbed) IHC-Fr image

Immunohistochemistry: Frozen section of Mouse lymph node tissue stained with ARG21522 Goat anti-Mouse IgM antibody (Texas Red) (pre-adsorbed) followed by DAPI.



ARG21522 Goat anti-Mouse IgM antibody (Texas Red) (pre-adsorbed) FLISA image

FLISA: The plate was coated with purified Mouse IgM, IgG and IgA. Immunoglobulins were detected with serially diluted ARG21522 Goat anti-Mouse IgM antibody (Texas Red) (pre-adsorbed).