

ARG21533 Goat anti-Mouse IgM antibody (Biotin), pre-adsorbed

Package: 500 µg
Store at: 4°C

Summary

Product Description	Biotin-conjugated Goat Polyclonal antibody recognizes Mouse IgM
Tested Reactivity	Ms
Tested Application	ELISA, ELISPOT, FACS, FLISA, ICC/IF, IHC-Fr, IHC-P, WB
Specificity	The antibody reacts with the heavy chain of Mouse IgM. The antibody is pre-adsorbed with Mouse IgG and IgA, so the antibody may not react with Mouse IgG and IgA, but may react with immunoglobulins from other species.
Host	Goat
Clonality	Polyclonal
Isotype	IgG
Target Name	IgM
Species	Mouse
Conjugation	Biotin

Application Instructions

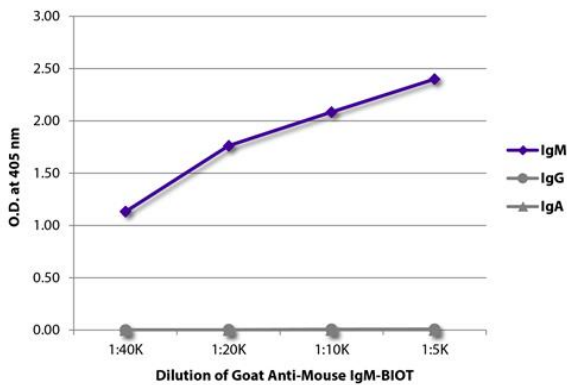
Pre Adsorbed	Mouse IgG and IgA.																		
Application table	<table><thead><tr><th>Application</th><th>Dilution</th></tr></thead><tbody><tr><td>ELISA</td><td>1:5000 - 1:20000</td></tr><tr><td>ELISPOT</td><td>Assay-dependent</td></tr><tr><td>FACS</td><td>< 1 ug/10⁶ cells</td></tr><tr><td>FLISA</td><td>Assay-dependent</td></tr><tr><td>ICC/IF</td><td>Assay-dependent</td></tr><tr><td>IHC-Fr</td><td>Assay-dependent</td></tr><tr><td>IHC-P</td><td>Assay-dependent</td></tr><tr><td>WB</td><td>Assay-dependent</td></tr></tbody></table>	Application	Dilution	ELISA	1:5000 - 1:20000	ELISPOT	Assay-dependent	FACS	< 1 ug/10 ⁶ cells	FLISA	Assay-dependent	ICC/IF	Assay-dependent	IHC-Fr	Assay-dependent	IHC-P	Assay-dependent	WB	Assay-dependent
Application	Dilution																		
ELISA	1:5000 - 1:20000																		
ELISPOT	Assay-dependent																		
FACS	< 1 ug/10 ⁶ cells																		
FLISA	Assay-dependent																		
ICC/IF	Assay-dependent																		
IHC-Fr	Assay-dependent																		
IHC-P	Assay-dependent																		
WB	Assay-dependent																		
Application Note	* The dilutions indicate recommended starting dilutions and the optimal dilutions or concentrations should be determined by the scientist.																		

Properties

Form	Liquid
Purification	Affinity purification with immunogen.
Buffer	PBS and 0.1% Sodium azide.

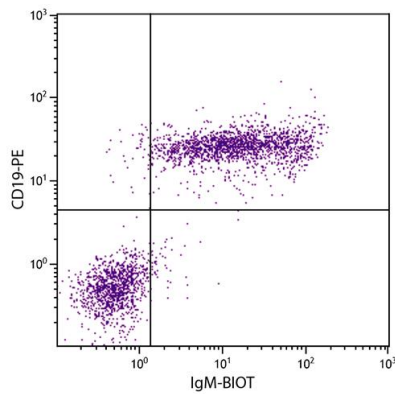
Preservative	0.1% Sodium azide
Concentration	0.5 mg/ml
Storage instruction	Aliquot and store in the dark at 2-8°C. Keep protected from prolonged exposure to light. Avoid repeated freeze/thaw cycles. Suggest spin the vial prior to opening. The antibody solution should be gently mixed before use.
Note	For laboratory research only, not for drug, diagnostic or other use.

Images



ARG21533 Goat anti-Mouse IgM antibody (Biotin) (pre-adsorbed)
ELISA image

ELISA: The plate was coated with purified Mouse IgM, IgG, and IgA. Immunoglobulins were detected with serially diluted ARG21533 Goat anti-Mouse IgM antibody (Biotin) (pre-adsorbed) followed by [ARG23912](#) Streptavidin (HRP).



ARG21533 Goat anti-Mouse IgM antibody (Biotin) (pre-adsorbed)
FACS image

Flow Cytometry: C57BL/6 Mouse splenocytes stained with ARG21533 Goat anti-Mouse IgM antibody (Biotin) (pre-adsorbed) and [ARG20852](#) anti-CD19 antibody [6D5] (PE) followed by Streptavidin (FITC).