

ARG21539 Goat anti-Mouse IgA antibody, pre-adsorbed

Package: 500 µg
Store at: -20°C

Summary

Product Description	Goat Polyclonal antibody recognizes Mouse IgA
Tested Reactivity	Ms
Tested Application	ELISA, ELISPOT, FACS, FLISA, ICC/IF, IHC-Fr, IHC-P, WB
Specificity	The antibody reacts with the heavy chain of Mouse IgA. The antibody is pre-adsorbed with Mouse IgG and IgM, so the antibody may not react with Mouse IgG and IgM, but may react with immunoglobulins from other species.
Host	Goat
Clonality	Polyclonal
Isotype	IgG
Target Name	IgA
Species	Mouse
Conjugation	Un-conjugated

Application Instructions

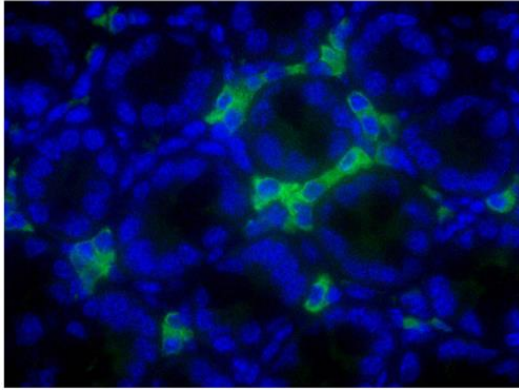
Pre Adsorbed	Mouse IgG and IgM.																		
Application table	<table><thead><tr><th>Application</th><th>Dilution</th></tr></thead><tbody><tr><td>ELISA</td><td>Assay-dependent</td></tr><tr><td>ELISPOT</td><td>Assay-dependent</td></tr><tr><td>FACS</td><td>Assay-dependent</td></tr><tr><td>FLISA</td><td>Assay-dependent</td></tr><tr><td>ICC/IF</td><td>Assay-dependent</td></tr><tr><td>IHC-Fr</td><td>Assay-dependent</td></tr><tr><td>IHC-P</td><td>Assay-dependent</td></tr><tr><td>WB</td><td>Assay-dependent</td></tr></tbody></table>	Application	Dilution	ELISA	Assay-dependent	ELISPOT	Assay-dependent	FACS	Assay-dependent	FLISA	Assay-dependent	ICC/IF	Assay-dependent	IHC-Fr	Assay-dependent	IHC-P	Assay-dependent	WB	Assay-dependent
Application	Dilution																		
ELISA	Assay-dependent																		
ELISPOT	Assay-dependent																		
FACS	Assay-dependent																		
FLISA	Assay-dependent																		
ICC/IF	Assay-dependent																		
IHC-Fr	Assay-dependent																		
IHC-P	Assay-dependent																		
WB	Assay-dependent																		
Application Note	* The dilutions indicate recommended starting dilutions and the optimal dilutions or concentrations should be determined by the scientist.																		

Properties

Form	Liquid
Purification	Affinity purification with immunogen.
Buffer	BBS (pH 8.2)

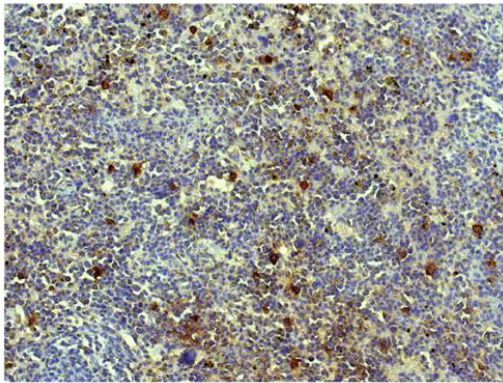
Concentration	1 mg/ml
Storage instruction	For continuous use, store undiluted antibody at 2-8°C for up to a week. For long-term storage, aliquot and store at -20°C. Storage in frost free freezers is not recommended. Avoid repeated freeze/thaw cycles. Suggest spin the vial prior to opening. The antibody solution should be gently mixed before use.
Note	For laboratory research only, not for drug, diagnostic or other use.

Images



ARG21539 Goat anti-Mouse IgA antibody (pre-adsorbed) IHC-P image

Immunohistochemistry: Paraffin-embedded BALB/c Mouse colon tissue stained with ARG21539 Goat anti-Mouse IgA antibody (pre-adsorbed) followed by [ARG23756](#) Donkey anti-Goat IgG (H+L) antibody (FITC) (pre-adsorbed) and DAPI.



ARG21539 Goat anti-Mouse IgA antibody (pre-adsorbed) IHC-P image

Immunohistochemistry: Paraffin-embedded Mouse spleen tissue stained with ARG21539 Goat anti-Mouse IgA antibody (pre-adsorbed) followed by [ARG23766](#) Donkey anti-Goat IgG (H+L) antibody (HRP) (pre-adsorbed), DAB and hematoxylin.