

ARG21546 Goat anti-Mouse IgA antibody (PE), pre-adsorbed

Package: 250 µg
Store at: 4°C

Summary

Product Description	PE-conjugated Goat Polyclonal antibody recognizes Mouse IgA
Tested Reactivity	Ms
Tested Application	FACS, FLISA, ICC/IF, IHC-Fr, IHC-P, WB
Specificity	The antibody reacts with the heavy chain of Mouse IgA. The antibody is pre-adsorbed with Mouse IgG and IgM, so the antibody may not react with Mouse IgG and IgM, but may react with immunoglobulins from other species.
Host	Goat
Clonality	Polyclonal
Isotype	IgG
Target Name	IgA
Species	Mouse
Conjugation	PE

Application Instructions

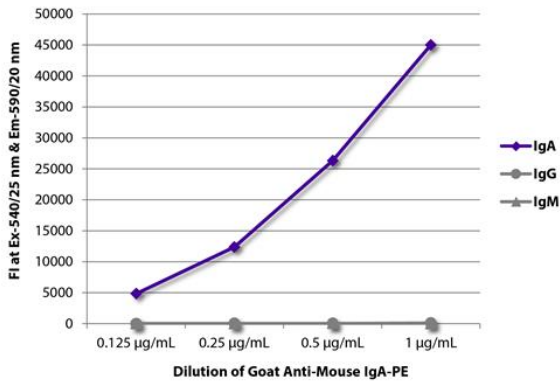
Pre Adsorbed	Mouse IgG and IgM.														
Application table	<table border="1"> <thead> <tr> <th>Application</th> <th>Dilution</th> </tr> </thead> <tbody> <tr> <td>FACS</td> <td>< 0.1 ug/10⁶ cells</td> </tr> <tr> <td>FLISA</td> <td>< 1 ug/ml</td> </tr> <tr> <td>ICC/IF</td> <td>Assay-dependent</td> </tr> <tr> <td>IHC-Fr</td> <td>Assay-dependent</td> </tr> <tr> <td>IHC-P</td> <td>Assay-dependent</td> </tr> <tr> <td>WB</td> <td>Assay-dependent</td> </tr> </tbody> </table>	Application	Dilution	FACS	< 0.1 ug/10 ⁶ cells	FLISA	< 1 ug/ml	ICC/IF	Assay-dependent	IHC-Fr	Assay-dependent	IHC-P	Assay-dependent	WB	Assay-dependent
Application	Dilution														
FACS	< 0.1 ug/10 ⁶ cells														
FLISA	< 1 ug/ml														
ICC/IF	Assay-dependent														
IHC-Fr	Assay-dependent														
IHC-P	Assay-dependent														
WB	Assay-dependent														
Application Note	* The dilutions indicate recommended starting dilutions and the optimal dilutions or concentrations should be determined by the scientist.														

Properties

Form	Liquid
Purification	Affinity purification with immunogen.
Buffer	PBS, 0.1% Sodium azide and Sucrose.
Preservative	0.1% Sodium azide
Stabilizer	Sucrose

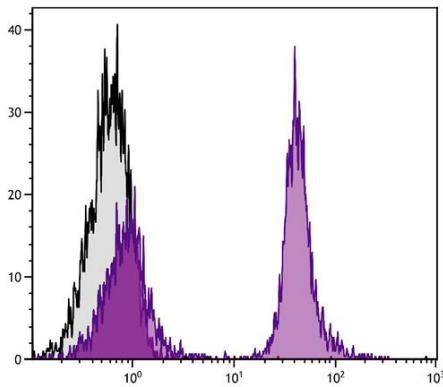
Concentration	0.5 mg/ml
Storage instruction	Aliquot and store in the dark at 2-8°C. Keep protected from prolonged exposure to light. Avoid repeated freeze/thaw cycles. Suggest spin the vial prior to opening. The antibody solution should be gently mixed before use.
Note	For laboratory research only, not for drug, diagnostic or other use.

Images



ARG21546 Goat anti-Mouse IgA antibody (PE) (pre-adsorbed) FLISA image

FLISA: The plate was coated with purified Mouse IgA, IgG and IgM. Immunoglobulins were detected with serially diluted ARG21546 Goat anti-Mouse IgA antibody (PE) (pre-adsorbed).



ARG21546 Goat anti-Mouse IgA antibody (PE) (pre-adsorbed) FACS image

Flow Cytometry: BALB/c Mouse splenocytes stained with [ARG20858](#) anti-CD19 antibody [MB19-1] followed by ARG21546 Goat anti-Mouse IgA antibody (PE) (pre-adsorbed).