

## ARG21549 Goat anti-Mouse Kappa Light Chain antibody (TRITC), pre-adsorbed

Package: 500 µg  
Store at: 4°C

### Summary

|                     |   |
|---------------------|---|
| Product Description | TRITC-conjugated Goat Polyclonal antibody recognizes Mouse Kappa Light Chain  |
| Tested Reactivity   | Ms  |
| Tested Application  | FACS, FLISA, ICC/IF, IHC-Fr, IHC-P, WB  |
| Specificity         | The antibody reacts with Mouse kappa light chains. The antibody is pre-adsorbed with Mouse lambda light chains, so the antibody may not react with Mouse lambda light chains, but may react with kappa light chains from other species. |
| Host                | Goat  |
| Clonality           | Polyclonal  |
| Isotype             | IgG   |
| Target Name         | Kappa Light Chain   |
| Species             | Mouse   |
| Conjugation         | TRITC   |

### Application Instructions

| Pre Adsorbed      | Mouse lambda light chains.  |             |          |      |                 |       |               |        |                 |        |                 |       |                 |    |                 |
|-------------------|---|-------------|----------|------|-----------------|-------|---------------|--------|-----------------|--------|-----------------|-------|-----------------|----|-----------------|
| Application table | <table><thead><tr><th>Application</th><th>Dilution</th></tr></thead><tbody><tr><td>FACS</td><td>Assay-dependent</td></tr><tr><td>FLISA</td><td>1:100 - 1:400</td></tr><tr><td>ICC/IF</td><td>Assay-dependent</td></tr><tr><td>IHC-Fr</td><td>Assay-dependent</td></tr><tr><td>IHC-P</td><td>Assay-dependent</td></tr><tr><td>WB</td><td>Assay-dependent</td></tr></tbody></table> | Application | Dilution | FACS | Assay-dependent | FLISA | 1:100 - 1:400 | ICC/IF | Assay-dependent | IHC-Fr | Assay-dependent | IHC-P | Assay-dependent | WB | Assay-dependent |
| Application       | Dilution  |             |          |      |                 |       |               |        |                 |        |                 |       |                 |    |                 |
| FACS              | Assay-dependent   |             |          |      |                 |       |               |        |                 |        |                 |       |                 |    |                 |
| FLISA             | 1:100 - 1:400   |             |          |      |                 |       |               |        |                 |        |                 |       |                 |    |                 |
| ICC/IF            | Assay-dependent   |             |          |      |                 |       |               |        |                 |        |                 |       |                 |    |                 |
| IHC-Fr            | Assay-dependent   |             |          |      |                 |       |               |        |                 |        |                 |       |                 |    |                 |
| IHC-P             | Assay-dependent   |             |          |      |                 |       |               |        |                 |        |                 |       |                 |    |                 |
| WB                | Assay-dependent   |             |          |      |                 |       |               |        |                 |        |                 |       |                 |    |                 |
| Application Note  | * The dilutions indicate recommended starting dilutions and the optimal dilutions or concentrations should be determined by the scientist.  |             |          |      |                 |       |               |        |                 |        |                 |       |                 |    |                 |

### Properties

|               |                                       |
|---------------|---------------------------------------|
| Form          | Liquid                                |
| Purification  | Affinity purification with immunogen. |
| Buffer        | PBS and 0.1% Sodium azide.            |
| Preservative  | 0.1% Sodium azide                     |
| Concentration | 1 mg/ml                               |

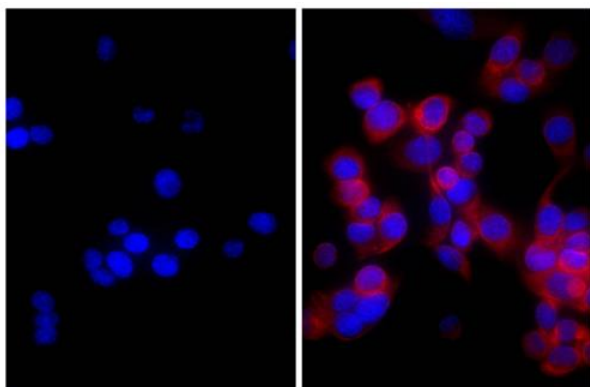
**Storage instruction**

Aliquot and store in the dark at 2-8°C. Keep protected from prolonged exposure to light. Avoid repeated freeze/thaw cycles. Suggest spin the vial prior to opening. The antibody solution should be gently mixed before use.

**Note**

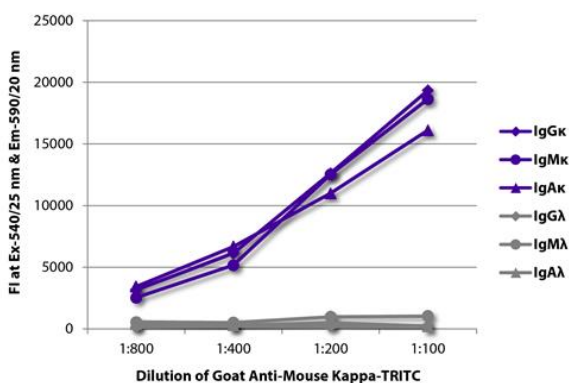
For laboratory research only, not for drug, diagnostic or other use.

**Images**



ARG21549 Goat anti-Mouse Kappa Light Chain antibody (TRITC) (pre-adsorbed) ICC/IF image

Immunofluorescence: Human pancreatic carcinoma cell line MIA PaCa-2 stained with anti-Cytokeratin 18 antibody (right) followed by ARG21549 Goat anti-Mouse Kappa Light Chain antibody (TRITC) (pre-adsorbed) and DAPI.



ARG21549 Goat anti-Mouse Kappa Light Chain antibody (TRITC) (pre-adsorbed) FLISA image

FLISA: The plate was coated with purified Mouse IgGκ, IgMκ, IgAκ, IgGλ, IgMλ and IgAλ. Immunoglobulins were detected with serially diluted ARG21549 Goat anti-Mouse Kappa Light Chain antibody (TRITC) (pre-adsorbed).