

ARG21555 Goat anti-Mouse Lambda Light Chain antibody, pre-adsorbed

Package: 500 µg
Store at: -20°C

Summary

Product Description	Goat Polyclonal antibody recognizes Mouse Lambda Light Chain
Tested Reactivity	Ms
Tested Application	ELISA, ELISPOT, FACS, FLISA, ICC/IF, IHC-Fr, IHC-P, IP, WB
Specificity	The antibody reacts with Mouse lambda light chains. The antibody is pre-adsorbed with Mouse kappa light chains, so the antibody may not react with Mouse kappa light chains, but may react with lambda light chains from other species.
Host	Goat
Clonality	Polyclonal
Isotype	IgG
Target Name	Lambda Light Chain
Species	Mouse
Conjugation	Un-conjugated

Application Instructions

Pre Adsorbed Mouse kappa light chains.

Application table

Application	Dilution
ELISA	Assay-dependent
ELISPOT	Assay-dependent
FACS	Assay-dependent
FLISA	Assay-dependent
ICC/IF	Assay-dependent
IHC-Fr	Assay-dependent
IHC-P	Assay-dependent
IP	Assay-dependent
WB	Assay-dependent

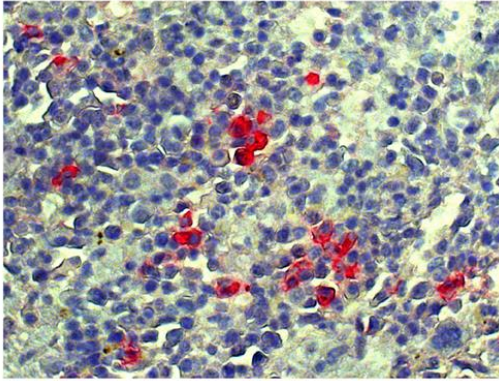
Application Note * The dilutions indicate recommended starting dilutions and the optimal dilutions or concentrations should be determined by the scientist.

Properties

Form	Liquid
Purification	Affinity purification with immunogen.

Buffer	BBS (pH 8.2)
Concentration	1 mg/ml
Storage instruction	For continuous use, store undiluted antibody at 2-8°C for up to a week. For long-term storage, aliquot and store at -20°C. Storage in frost free freezers is not recommended. Avoid repeated freeze/thaw cycles. Suggest spin the vial prior to opening. The antibody solution should be gently mixed before use.
Note	For laboratory research only, not for drug, diagnostic or other use.

Images



ARG21555 Goat anti-Mouse Lambda Light Chain antibody (pre-adsorbed) IHC-P image

Immunohistochemistry: Paraffin-embedded Mouse spleen tissue stained with ARG21555 Goat anti-Mouse Lambda Light Chain antibody (pre-adsorbed) followed by [ARG21777](#) Donkey anti-Goat IgG (H+L) antibody (AP) (pre-adsorbed), Red AP and hematoxylin.