

## ARG21559 Goat anti-Mouse Lambda Light Chain antibody (HRP), pre-adsorbed

Package: 500 µl  
Store at: 4°C

### Summary

Product Description	HRP-conjugated Goat Polyclonal antibody recognizes Mouse Lambda Light Chain
Tested Reactivity	Ms
Tested Application	ELISA, ELISPOT, FACS, FLISA, ICC/IF, IHC-Fr, IHC-P, WB
Specificity	The antibody reacts with Mouse lambda light chains. The antibody is pre-adsorbed with Mouse kappa light chains, so the antibody may not react with Mouse kappa light chains, but may react with lambda light chains from other species.
Host	Goat
Clonality	Polyclonal
Isotype	IgG
Target Name	Lambda Light Chain
Species	Mouse
Conjugation	HRP

### Application Instructions

Pre Adsorbed	Mouse kappa light chains.																		
Application table	<table><thead><tr><th>Application</th><th>Dilution</th></tr></thead><tbody><tr><td>ELISA</td><td>1:4000 - 1:8000</td></tr><tr><td>ELISPOT</td><td>Assay-dependent</td></tr><tr><td>FACS</td><td>Assay-dependent</td></tr><tr><td>FLISA</td><td>Assay-dependent</td></tr><tr><td>ICC/IF</td><td>Assay-dependent</td></tr><tr><td>IHC-Fr</td><td>Assay-dependent</td></tr><tr><td>IHC-P</td><td>Assay-dependent</td></tr><tr><td>WB</td><td>Assay-dependent</td></tr></tbody></table>	Application	Dilution	ELISA	1:4000 - 1:8000	ELISPOT	Assay-dependent	FACS	Assay-dependent	FLISA	Assay-dependent	ICC/IF	Assay-dependent	IHC-Fr	Assay-dependent	IHC-P	Assay-dependent	WB	Assay-dependent
Application	Dilution																		
ELISA	1:4000 - 1:8000																		
ELISPOT	Assay-dependent																		
FACS	Assay-dependent																		
FLISA	Assay-dependent																		
ICC/IF	Assay-dependent																		
IHC-Fr	Assay-dependent																		
IHC-P	Assay-dependent																		
WB	Assay-dependent																		
Application Note	* The dilutions indicate recommended starting dilutions and the optimal dilutions or concentrations should be determined by the scientist.																		

### Properties

Form	Liquid
Purification	Affinity purification with immunogen.
Buffer	50% PBS (pH 7.4) and 50% Glycerol

Stabilizer

50% Glycerol

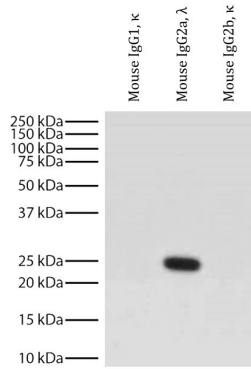
Storage instruction

Aliquot and store in the dark at 2-8°C. Keep protected from prolonged exposure to light. Avoid repeated freeze/thaw cycles. Suggest spin the vial prior to opening. The antibody solution should be gently mixed before use.

Note

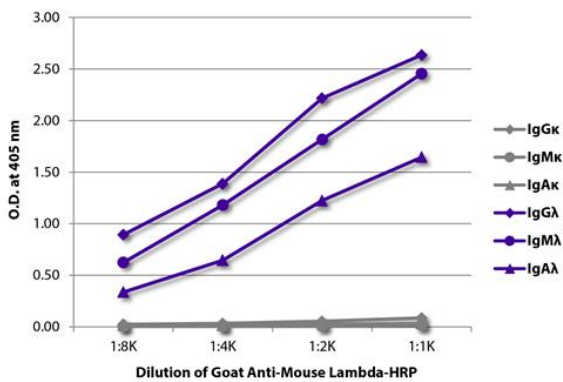
For laboratory research only, not for drug, diagnostic or other use.

## Images



ARG21559 Goat anti-Mouse Lambda Light Chain antibody (HRP) (pre-adsorbed) WB image

Western blot: Mouse IgG1 $\kappa$ , Mouse IgG2a $\lambda$  and Mouse IgG2b $\kappa$  (left to right), under reducing conditions. The blots were stained with ARG21559 Goat anti-Mouse Lambda Light Chain antibody (HRP) (pre-adsorbed) at 1:4000 dilution.



ARG21559 Goat anti-Mouse Lambda Light Chain antibody (HRP) (pre-adsorbed) ELISA image

ELISA: The plate was coated with purified Mouse IgG $\kappa$ , IgM $\kappa$ , IgA $\kappa$ , IgG $\lambda$ , IgM $\lambda$ , and IgA $\lambda$ . Immunoglobulins were detected with serially diluted ARG21559 Goat anti-Mouse Lambda Light Chain antibody (HRP) (pre-adsorbed).