

ARG21562

Goat anti-Mouse Lambda Light Chain antibody (PE), pre-adsorbed

Package: 250 µg

Store at: 4°C

Summary

Product Description	PE-conjugated Goat Polyclonal antibody recognizes Mouse Lambda Light Chain
Tested Reactivity	Ms
Tested Application	FACS, FLISA, ICC/IF, IHC-Fr, IHC-P, WB
Specificity	The antibody reacts with Mouse lambda light chains. The antibody is pre-adsorbed with Mouse kappa light chains, so the antibody may not react with Mouse kappa light chains, but may react with lambda light chains from other species.
Host	Goat
Clonality	Polyclonal
Isotype	IgG
Target Name	Lambda Light Chain
Species	Mouse
Conjugation	PE

Application Instructions

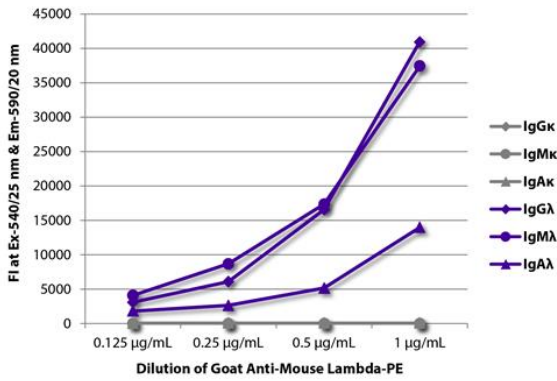
Pre Adsorbed	Mouse kappa light chains.														
Application table	<table border="1"> <thead> <tr> <th>Application</th> <th>Dilution</th> </tr> </thead> <tbody> <tr> <td>FACS</td> <td>< 0.1 ug/10⁶ cells</td> </tr> <tr> <td>FLISA</td> <td>< 1 ug/ml</td> </tr> <tr> <td>ICC/IF</td> <td>Assay-dependent</td> </tr> <tr> <td>IHC-Fr</td> <td>Assay-dependent</td> </tr> <tr> <td>IHC-P</td> <td>Assay-dependent</td> </tr> <tr> <td>WB</td> <td>Assay-dependent</td> </tr> </tbody> </table>	Application	Dilution	FACS	< 0.1 ug/10 ⁶ cells	FLISA	< 1 ug/ml	ICC/IF	Assay-dependent	IHC-Fr	Assay-dependent	IHC-P	Assay-dependent	WB	Assay-dependent
Application	Dilution														
FACS	< 0.1 ug/10 ⁶ cells														
FLISA	< 1 ug/ml														
ICC/IF	Assay-dependent														
IHC-Fr	Assay-dependent														
IHC-P	Assay-dependent														
WB	Assay-dependent														
Application Note	* The dilutions indicate recommended starting dilutions and the optimal dilutions or concentrations should be determined by the scientist.														

Properties

Form	Liquid
Purification	Affinity purification with immunogen.
Buffer	PBS, 0.1% Sodium azide and Sucrose.
Preservative	0.1% Sodium azide
Stabilizer	Sucrose

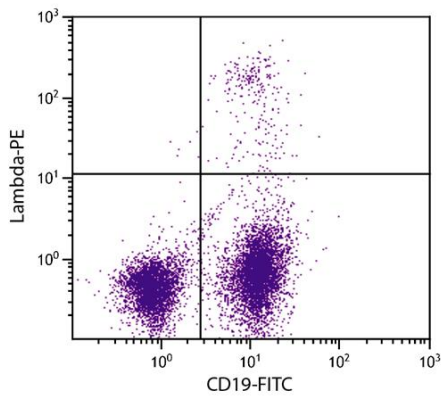
Concentration	0.5 mg/ml
Storage instruction	Aliquot and store in the dark at 2-8°C. Keep protected from prolonged exposure to light. Avoid repeated freeze/thaw cycles. Suggest spin the vial prior to opening. The antibody solution should be gently mixed before use.
Note	For laboratory research only, not for drug, diagnostic or other use.

Images



ARG21562 Goat anti-Mouse Lambda Light Chain antibody (PE) (pre-adsorbed) FLISA image

FLISA: The plate was coated with purified Mouse IgGκ, IgMκ, IgAκ, IgGλ, IgMλ and IgAλ. Immunoglobulins were detected with serially diluted ARG21562 Goat anti-Mouse Lambda Light Chain antibody (PE) (pre-adsorbed).



ARG21562 Goat anti-Mouse Lambda Light Chain antibody (PE) (pre-adsorbed) FACS image

Flow Cytometry: BALB/c Mouse splenocytes stained with ARG21562 Goat anti-Mouse Lambda Light Chain antibody (PE) (pre-adsorbed) and [ARG20850](#) anti-CD19 antibody [6D5] (FITC).