

## ARG21565 Goat anti-Mouse IgG1 antibody (PE), pre-adsorbed

Package: 250 µg  
Store at: 4°C

### Summary

Product Description	PE-conjugated Goat Polyclonal antibody recognizes Mouse IgG1
Tested Reactivity	Ms
Tested Application	EM, FACS, FLISA, ICC/IF, IHC-Fr, IHC-P, WB
Specificity	Reacts with the heavy chain of mouse IgG1
Host	Goat
Clonality	Polyclonal
Isotype	IgG
Target Name	IgG1
Species	Mouse
Conjugation	PE

### Application Instructions

Pre Adsorbed Mouse IgG2a, IgG2b, IgG3, IgM, and IgA; Human immunoglobulins and pooled sera.

#### Application table

Application	Dilution
EM	Assay-dependent
FACS	< 0.1 µg/10 <sup>6</sup> cells
FLISA	< 1 µg/ml
ICC/IF	Assay-dependent
IHC-Fr	Assay-dependent
IHC-P	Assay-dependent
WB	Assay-dependent

Application Note \* The dilutions indicate recommended starting dilutions and the optimal dilutions or concentrations should be determined by the scientist.

### Properties

Form	Liquid
Purification	Affinity purification with immunogen.
Buffer	PBS, 0.1% Sodium azide and Sucrose.
Preservative	0.1% Sodium azide
Stabilizer	Sucrose
Concentration	0.5 mg/ml

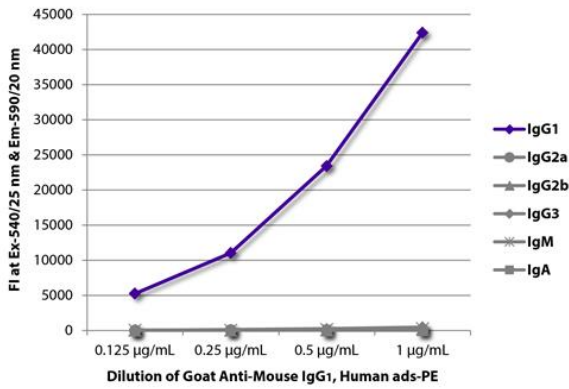
**Storage instruction**

Aliquot and store in the dark at 2-8°C. Keep protected from prolonged exposure to light. Avoid repeated freeze/thaw cycles. Suggest spin the vial prior to opening. The antibody solution should be gently mixed before use.

**Note**

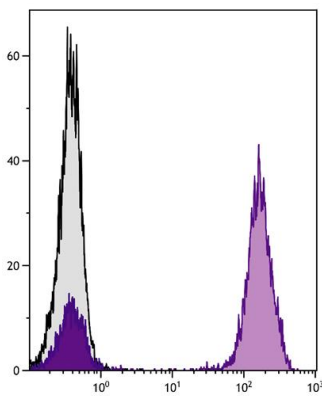
For laboratory research only, not for drug, diagnostic or other use.

**Images**



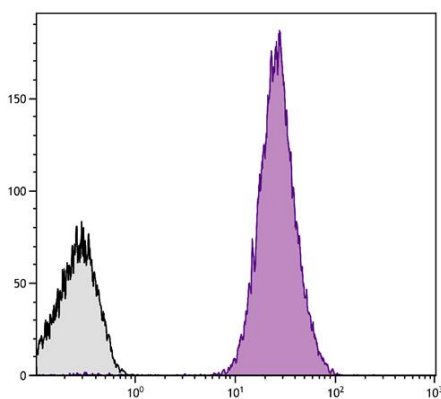
ARG21565 Goat anti-Mouse IgG1 antibody (PE) (pre-adsorbed) FLISA image

FLISA: The plate was coated with purified Mouse IgG1, IgG2a, IgG2b, IgG3, IgM and IgA. Immunoglobulins were detected with serially diluted ARG21565 Goat anti-Mouse IgG1 antibody (PE) (pre-adsorbed).



ARG21565 Goat anti-Mouse IgG1 antibody (PE) (pre-adsorbed) FACS image

Flow Cytometry: Human peripheral blood lymphocytes stained with Mouse anti-Human CD3 antibody followed by ARG21565 Goat anti-Mouse IgG1 antibody (PE) (pre-adsorbed).



ARG21565 Goat anti-Mouse IgG1 antibody (PE) (pre-adsorbed) FACS image

Flow Cytometry: Human peripheral blood platelets stained with [ARG20931](#) anti-CD61 / Integrin beta 3 antibody [PM6/13] followed by ARG21565 Goat anti-Mouse IgG1 antibody (PE) (pre-adsorbed).