

**ARG21591**  
**Rat anti-Mouse IgE antibody [23G3]**Package: 500 µg  
Store at: -20°C

### Summary

Product Description	Rat Monoclonal antibody [23G3] recognizes Mouse IgE
Tested Reactivity	Ms
Tested Application	ELISA, ELISPOT, FACS, FLISA, IHC-Fr, IHC-P, IHC-Wmt, Neut, WB
Host	Rat
Clonality	Monoclonal
Clone	23G3
Isotype	IgG1, kappa
Target Name	IgE
Species	Mouse
Immunogen	Monoclonal anti-DNP mouse IgE
Conjugation	Un-conjugated

### Application Instructions

Application table	Application	Dilution
	ELISA	Assay-dependent
	ELISPOT	Assay-dependent
	FACS	Assay-dependent
	FLISA	Assay-dependent
	IHC-Fr	Assay-dependent
	IHC-P	Assay-dependent
	IHC-Wmt	Assay-dependent
	Neut	Assay-dependent
	WB	Assay-dependent

**Application Note** \* The dilutions indicate recommended starting dilutions and the optimal dilutions or concentrations should be determined by the scientist.

### Properties

Form	Liquid
Buffer	BBS (pH 8.2)
Concentration	0.5 mg/ml
Storage instruction	For continuous use, store undiluted antibody at 2-8°C for up to a week. For long-term storage, aliquot

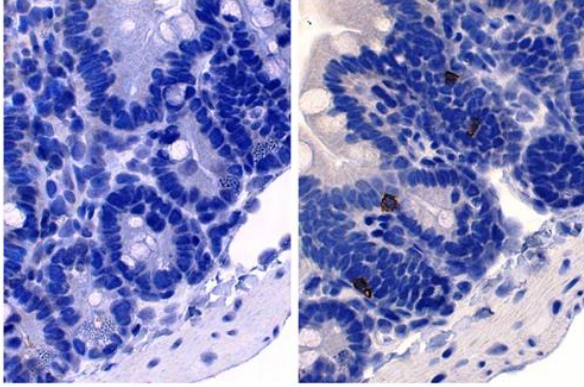
and store at -20°C. Storage in frost free freezers is not recommended. Avoid repeated freeze/thaw cycles. Suggest spin the vial prior to opening. The antibody solution should be gently mixed before use.

Note

For laboratory research only, not for drug, diagnostic or other use.

## Images

---



ARG21591 Rat anti-Mouse IgE antibody [23G3] IHC-P image

Immunohistochemistry: Paraffin-embedded Mouse small intestine tissue stained with ARG21591 Rat anti-Mouse IgE antibody [23G3] (right) followed by an HRP-conjugated secondary antibody, DAB and hematoxylin.