

ARG21634
Rat anti-Mouse Kappa Light Chain antibody [H139-52.1]Package: 250 µg
Store at: -20°C

Summary

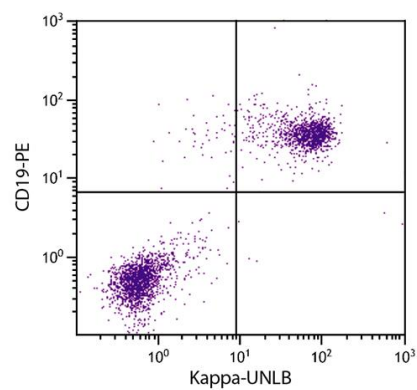
Product Description	Rat Monoclonal antibody [H139-52.1] recognizes Mouse Kappa Light Chain
Tested Reactivity	Ms
Tested Application	ELISA, FACS, FLISA, ICC/IF, WB
Host	Rat
Clonality	Monoclonal
Clone	H139-52.1
Isotype	IgG1, kappa
Target Name	Kappa Light Chain
Species	Mouse
Conjugation	Un-conjugated

Application Instructions

Application table	Application	Dilution
	ELISA	Assay-dependent
	FACS	Assay-dependent
	FLISA	Assay-dependent
	ICC/IF	Assay-dependent
	WB	Assay-dependent
Application Note	* The dilutions indicate recommended starting dilutions and the optimal dilutions or concentrations should be determined by the scientist.	

Properties

Form	Liquid
Buffer	BBS (pH 8.2)
Concentration	0.5 mg/ml
Storage instruction	For continuous use, store undiluted antibody at 2-8°C for up to a week. For long-term storage, aliquot and store at -20°C. Storage in frost free freezers is not recommended. Avoid repeated freeze/thaw cycles. Suggest spin the vial prior to opening. The antibody solution should be gently mixed before use.
Note	For laboratory research only, not for drug, diagnostic or other use.



ARG21634 Rat anti-Mouse Kappa Light Chain antibody [H139-52.1]
FACS image

Flow Cytometry: BALB/c Mouse splenocytes stained with ARG21634 Rat anti-Mouse Kappa Light Chain antibody [H139-52.1] and [ARG20852](#) anti-CD19 antibody [6D5] (PE) followed by [ARG21695](#) Mouse anti-Rat IgG1 antibody [G17E7] (FITC).