

ARG21638 Rat anti-Mouse Kappa Light Chain antibody [H139-52.1] (Biotin)

Package: 250 µg
Store at: 4°C

Summary

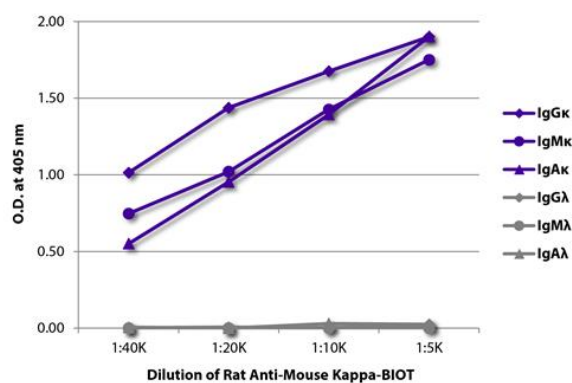
Product Description	Biotin-conjugated Rat Monoclonal antibody [H139-52.1] recognizes Mouse Kappa Light Chain
Tested Reactivity	Ms
Tested Application	ELISA, FACS, FLISA, ICC/IF, WB
Host	Rat
Clonality	Monoclonal
Clone	H139-52.1
Isotype	IgG1, kappa
Target Name	Kappa Light Chain
Species	Mouse
Conjugation	Biotin

Application Instructions

Application table	Application	Dilution
	ELISA	1:5000 - 1:20000
	FACS	< 1 ug/10 ⁶ cells
	FLISA	Assay-dependent
	ICC/IF	Assay-dependent
	WB	Assay-dependent
	Application Note	* The dilutions indicate recommended starting dilutions and the optimal dilutions or concentrations should be determined by the scientist.

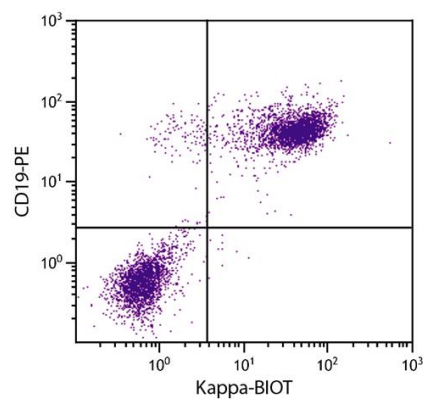
Properties

Form	Liquid
Buffer	PBS and 0.1% Sodium azide.
Preservative	0.1% Sodium azide
Concentration	0.5 mg/ml
Storage instruction	Aliquot and store in the dark at 2-8°C. Keep protected from prolonged exposure to light. Avoid repeated freeze/thaw cycles. Suggest spin the vial prior to opening. The antibody solution should be gently mixed before use.
Note	For laboratory research only, not for drug, diagnostic or other use.



ARG21638 Rat anti-Mouse Kappa Light Chain antibody [H139-52.1] (Biotin) ELISA image

ELISA: The plate was coated with purified Mouse IgGκ, IgMκ, IgAκ, IgGλ, IgMλ, and IgAλ. Immunoglobulins were detected with serially diluted ARG21638 Rat anti-Mouse Kappa Light Chain antibody [H139-52.1] (Biotin) followed by [ARG23912](#) Streptavidin (HRP).



ARG21638 Rat anti-Mouse Kappa Light Chain antibody [H139-52.1] (Biotin) FACS image

Flow Cytometry: BALB/c Mouse splenocytes stained with ARG21638 Rat anti-Mouse Kappa Light Chain antibody [H139-52.1] (Biotin) and [ARG20852](#) anti-CD19 antibody [6D5] (PE) followed by Streptavidin (FITC).