

ARG21645 Goat anti-Human IgM antibody (FITC), pre-adsorbed

Package: 500 µg
Store at: 4°C

Summary

Product Description	FITC-conjugated Goat Polyclonal antibody recognizes Human IgM
Tested Reactivity	Hu
Tested Application	Depletion, FACS, FLISA, ICC/IF, IHC-Fr, IHC-P, WB
Specificity	The antibody reacts with the heavy chain of Human IgM. The antibody is pre-adsorbed with Human IgG and IgA, so the antibody may not react with Human IgG and IgA, but may react with IgM from other species.
Host	Goat
Clonality	Polyclonal
Isotype	IgG
Target Name	IgM
Species	Human
Conjugation	FITC

Application Instructions

Pre Adsorbed	Human IgG and IgA.																	
Application table	<table><thead><tr><th>Application</th><th>Dilution</th></tr></thead><tbody><tr><td>Depletion</td><td>Assay-dependent</td></tr><tr><td>FACS</td><td>< 1 ug/10⁶ cells</td></tr><tr><td>FLISA</td><td>1:100 - 1:400</td></tr><tr><td>ICC/IF</td><td>Assay-dependent</td></tr><tr><td>IHC-Fr</td><td>Assay-dependent</td></tr><tr><td>IHC-P</td><td>Assay-dependent</td></tr><tr><td>WB</td><td>Assay-dependent</td></tr></tbody></table>		Application	Dilution	Depletion	Assay-dependent	FACS	< 1 ug/10 ⁶ cells	FLISA	1:100 - 1:400	ICC/IF	Assay-dependent	IHC-Fr	Assay-dependent	IHC-P	Assay-dependent	WB	Assay-dependent
Application	Dilution																	
Depletion	Assay-dependent																	
FACS	< 1 ug/10 ⁶ cells																	
FLISA	1:100 - 1:400																	
ICC/IF	Assay-dependent																	
IHC-Fr	Assay-dependent																	
IHC-P	Assay-dependent																	
WB	Assay-dependent																	
Application Note	* The dilutions indicate recommended starting dilutions and the optimal dilutions or concentrations should be determined by the scientist.																	

Properties

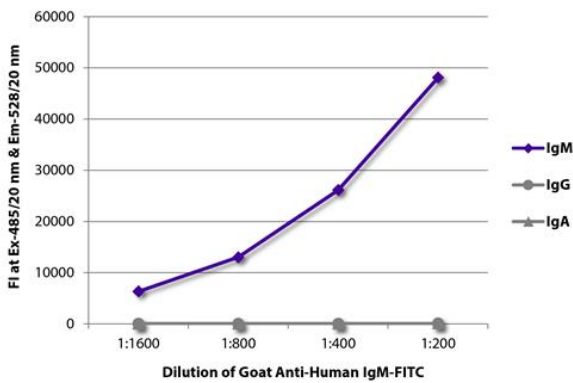
Form	Liquid
Purification	Affinity purification with immunogen.
Buffer	PBS and 0.1% Sodium azide.
Preservative	0.1% Sodium azide

Concentration	1 mg/ml
Storage instruction	Aliquot and store in the dark at 2-8°C. Keep protected from prolonged exposure to light. Avoid repeated freeze/thaw cycles. Suggest spin the vial prior to opening. The antibody solution should be gently mixed before use.
Note	For laboratory research only, not for drug, diagnostic or other use.

Bioinformation

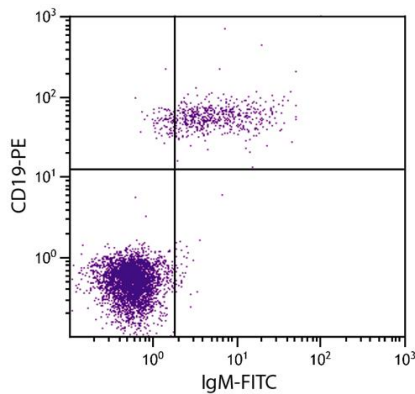
Highlight [Related news: Comprehensive anti-Human secondary antibodies](#)

Images



ARG21645 Goat anti-Human IgM antibody (FITC) (pre-adsorbed) FLISA image

FLISA: The plate was coated with purified Human IgM, IgG and IgA. Immunoglobulins were detected with serially diluted ARG21645 Goat anti-Human IgM antibody (FITC) (pre-adsorbed).



ARG21645 Goat anti-Human IgM antibody (FITC) (pre-adsorbed) FACS image

Flow Cytometry: Human peripheral blood lymphocytes stained with ARG21645 Goat anti-Human IgM antibody (FITC) (pre-adsorbed) and [ARG21260](#) anti-CD19 antibody [SJ25-C1] (PE).