

ARG21653**Goat anti-Human IgM antibody, F(ab')₂ fragment (FITC), pre-adsorbed**

Package: 500 µg

Store at: 4°C

Summary

Product Description	FITC-conjugated F(ab') ₂ fragment of Goat Polyclonal antibody recognizes Human IgM
Tested Reactivity	Hu
Tested Application	FACS, FLISA
Specificity	The antibody reacts with the heavy chain of Human IgM. The antibody is pre-adsorbed with Human IgG and IgA, so the antibody may not react with Human IgG and IgA, but may react with IgM from other species.
Host	Goat
Clonality	Polyclonal
Isotype	F(ab') ₂ IgG
Target Name	IgM
Species	Human
Conjugation	FITC

Application Instructions

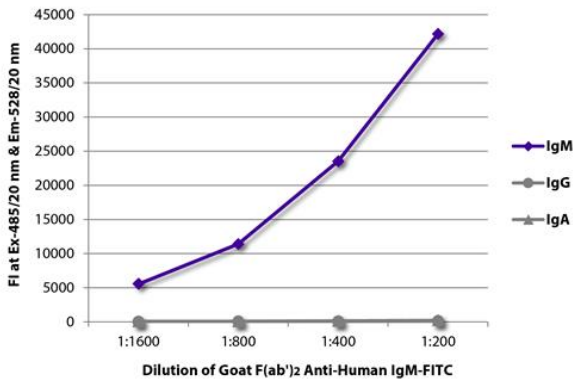
Pre Adsorbed	Human IgG and IgA.						
Application table	<table><thead><tr><th>Application</th><th>Dilution</th></tr></thead><tbody><tr><td>FACS</td><td>< 1 µg/10⁶ cells</td></tr><tr><td>FLISA</td><td>1:100 - 1:400</td></tr></tbody></table>	Application	Dilution	FACS	< 1 µg/10 ⁶ cells	FLISA	1:100 - 1:400
Application	Dilution						
FACS	< 1 µg/10 ⁶ cells						
FLISA	1:100 - 1:400						
Application Note	* The dilutions indicate recommended starting dilutions and the optimal dilutions or concentrations should be determined by the scientist.						

Properties

Form	Liquid
Buffer	PBS and 0.1% Sodium azide.
Preservative	0.1% Sodium azide
Concentration	0.5 mg/ml
Storage instruction	Aliquot and store in the dark at 2-8°C. Keep protected from prolonged exposure to light. Avoid repeated freeze/thaw cycles. Suggest spin the vial prior to opening. The antibody solution should be gently mixed before use.
Note	For laboratory research only, not for drug, diagnostic or other use.

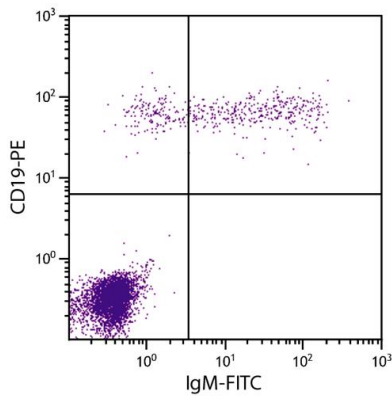
Bioinformation

Images



ARG21653 Goat anti-Human IgM antibody, F(ab')₂ fragment (FITC) (pre-adsorbed) FLISA image

FLISA: The plate was coated with purified Human IgM, IgG and IgA. Immunoglobulins were detected with serially diluted ARG21653 Goat anti-Human IgM antibody, F(ab')₂ fragment (FITC) (pre-adsorbed).



ARG21653 Goat anti-Human IgM antibody, F(ab')₂ fragment (FITC) (pre-adsorbed) FACS image

Flow Cytometry: Human peripheral blood lymphocytes stained with ARG21653 Goat anti-Human IgM antibody, F(ab')₂ fragment (FITC) (pre-adsorbed) and [ARG21260](#) anti-CD19 antibody [SJ25-C1] (PE).