

ARG21685 Goat anti-Rat IgM antibody (HRP), pre-adsorbed

Package: 500 µl
Store at: 4°C

Summary

Product Description	HRP-conjugated Goat Polyclonal antibody recognizes Rat IgM
Tested Reactivity	Rat
Tested Application	ELISA, FACS, FLISA, ICC/IF, IHC-Fr, IHC-P, WB
Specificity	The antibody reacts with the heavy chain of Rat IgM. The antibody is pre-adsorbed with Rat IgG, so the antibody may not react with Rat IgG, but may react with immunoglobulins from other species.
Host	Goat
Clonality	Polyclonal
Isotype	IgG
Target Name	IgM
Species	Rat
Conjugation	HRP

Application Instructions

Pre Adsorbed	Rat IgG.																	
Application table	<table><thead><tr><th>Application</th><th>Dilution</th></tr></thead><tbody><tr><td>ELISA</td><td>1:4000 - 1:8000</td></tr><tr><td>FACS</td><td>Assay-dependent</td></tr><tr><td>FLISA</td><td>Assay-dependent</td></tr><tr><td>ICC/IF</td><td>Assay-dependent</td></tr><tr><td>IHC-Fr</td><td>Assay-dependent</td></tr><tr><td>IHC-P</td><td>Assay-dependent</td></tr><tr><td>WB</td><td>Assay-dependent</td></tr></tbody></table>		Application	Dilution	ELISA	1:4000 - 1:8000	FACS	Assay-dependent	FLISA	Assay-dependent	ICC/IF	Assay-dependent	IHC-Fr	Assay-dependent	IHC-P	Assay-dependent	WB	Assay-dependent
Application	Dilution																	
ELISA	1:4000 - 1:8000																	
FACS	Assay-dependent																	
FLISA	Assay-dependent																	
ICC/IF	Assay-dependent																	
IHC-Fr	Assay-dependent																	
IHC-P	Assay-dependent																	
WB	Assay-dependent																	
Application Note	* The dilutions indicate recommended starting dilutions and the optimal dilutions or concentrations should be determined by the scientist.																	

Properties

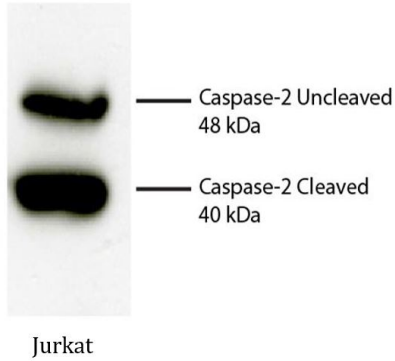
Form	Liquid
Purification	Affinity purification with immunogen.
Buffer	50% PBS (pH 7.4) and 50% Glycerol
Stabilizer	50% Glycerol
Storage instruction	Aliquot and store in the dark at 2-8°C. Keep protected from prolonged exposure to light. Avoid repeated freeze/thaw cycles. Suggest spin the vial prior to opening. The antibody solution should be

gently mixed before use.

Note

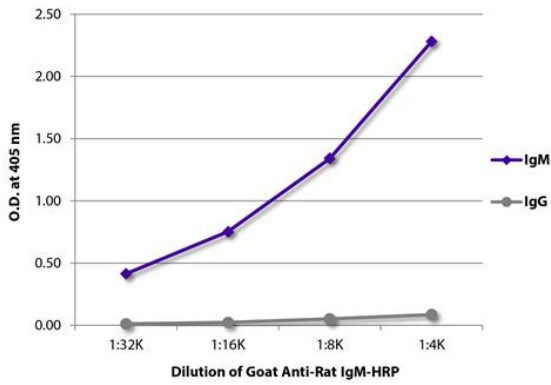
For laboratory research only, not for drug, diagnostic or other use.

Images



ARG21685 Goat anti-Rat IgM antibody (HRP) (pre-adsorbed) WB image

Western blot: Jurkat cell lysate stained with anti-Caspase 2 antibody. Secondary antibody: ARG21685 Goat anti-Rat IgM antibody (HRP) (pre-adsorbed).



ARG21685 Goat anti-Rat IgM antibody (HRP) (pre-adsorbed) ELISA image

ELISA: The plate was coated with purified Rat IgM and IgG. Immunoglobulins were detected with serially diluted ARG21685 Goat anti-Rat IgM antibody (HRP) (pre-adsorbed).