

ARG21883 Goat anti-Mouse IgG1 antibody, pre-adsorbed

Package: 500 µg
Store at: -20°C

Summary

Product Description	Goat Polyclonal antibody recognizes Mouse IgG1
Tested Reactivity	Ms
Tested Application	ELISA, ELISPOT, EM, FACS, FLISA, ICC/IF, IHC-Fr, IHC-P, WB
Specificity	Reacts with the heavy chain of Mouse IgG1.
Host	Goat
Clonality	Polyclonal
Isotype	IgG
Target Name	IgG1
Species	Mouse
Conjugation	Un-conjugated

Application Instructions

Pre Adsorbed Mouse IgG2a, IgG2b, IgG3, IgM, and IgA; Human immunoglobulins and pooled sera.

Application table

Application	Dilution
ELISA	Assay-dependent
ELISPOT	Assay-dependent
EM	Assay-dependent
FACS	Assay-dependent
FLISA	Assay-dependent
ICC/IF	Assay-dependent
IHC-Fr	Assay-dependent
IHC-P	Assay-dependent
WB	Assay-dependent

Application Note * The dilutions indicate recommended starting dilutions and the optimal dilutions or concentrations should be determined by the scientist.

Properties

Form	Liquid
Purification	Affinity purification with immunogen.
Buffer	BBS (pH 8.2)
Concentration	1 mg/ml

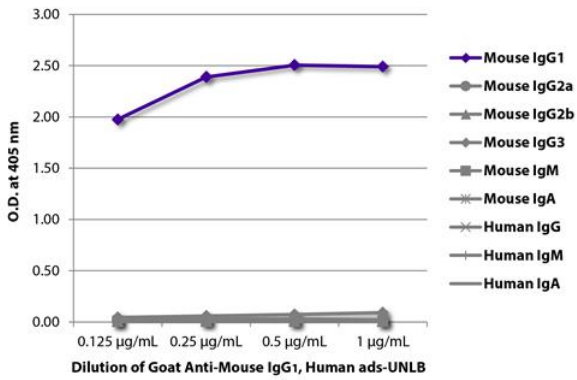
Storage instruction

For continuous use, store undiluted antibody at 2-8°C for up to a week. For long-term storage, aliquot and store at -20°C. Storage in frost free freezers is not recommended. Avoid repeated freeze/thaw cycles. Suggest spin the vial prior to opening. The antibody solution should be gently mixed before use.

Note

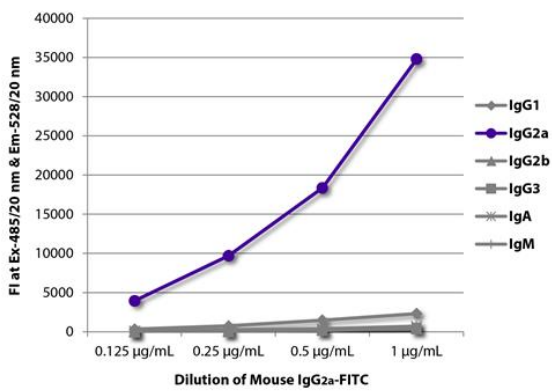
For laboratory research only, not for drug, diagnostic or other use.

Images



ARG21883 Goat anti-Mouse IgG1 antibody (pre-adsorbed) ELISA image

ELISA: The plate was coated with purified Mouse IgG1, IgG2a, IgG2b, IgG3, IgM, and IgA and Human IgG, IgM, and IgA. Immunoglobulins were detected with serially diluted ARG21883 Goat anti-Mouse IgG1 antibody (pre-adsorbed) followed by [ARG23857](#) Swine anti-Goat IgG (H+L) antibody (HRP) (pre-adsorbed).



ARG21883 Goat anti-Mouse IgG1 antibody, pre-adsorbed FLISA image

FLISA: The plate was coated with [ARG21883](#) Goat anti-Mouse IgG1 antibody (pre-adsorbed), [ARG23801](#) Goat anti-Mouse IgG2a antibody (pre-adsorbed), [ARG21891](#) Goat anti-Mouse IgG2b antibody (pre-adsorbed), Goat anti-Mouse IgG3 antibody, [ARG21539](#) Goat anti-Mouse IgA antibody (pre-adsorbed), and [ARG21517](#) Goat anti-Mouse IgM antibody (pre-adsorbed). Serially diluted [ARG23894](#) Mouse IgG2a Lambda Isotype Control antibody [HOPC-1] (FITC) was captured and fluorescence intensity quantified.