

## ARG21886 Goat anti-Mouse IgG1 antibody (HRP), pre-adsorbed

Package: 500 µl  
Store at: 4°C

### Summary

Product Description	HRP-conjugated Goat Polyclonal antibody recognizes Mouse IgG1
Tested Reactivity	Ms
Tested Application	ELISA, ELISPOT, EM, FACS, FLISA, ICC/IF, IHC-Fr, IHC-P, WB
Specificity	Reacts with the heavy chain of mouse IgG1
Host	Goat
Clonality	Polyclonal
Isotype	IgG
Target Name	IgG1
Species	Mouse
Conjugation	HRP

### Application Instructions

Pre Adsorbed Mouse IgG2a, IgG2b, IgG3, IgM, and IgA; Human immunoglobulins and pooled sera.

#### Application table

Application	Dilution
ELISA	1:4000 - 1:8000
ELISPOT	Assay-dependent
EM	Assay-dependent
FACS	Assay-dependent
FLISA	Assay-dependent
ICC/IF	Assay-dependent
IHC-Fr	Assay-dependent
IHC-P	Assay-dependent
WB	Assay-dependent

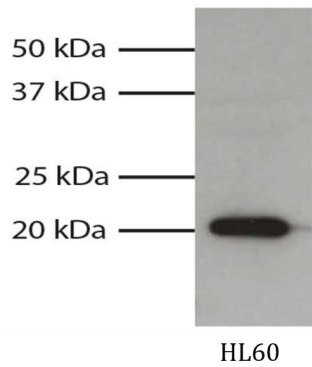
Application Note \* The dilutions indicate recommended starting dilutions and the optimal dilutions or concentrations should be determined by the scientist.

### Properties

Form	Liquid
Purification	Affinity purification with immunogen.
Buffer	50% PBS (pH 7.4) and 50% Glycerol
Stabilizer	50% Glycerol

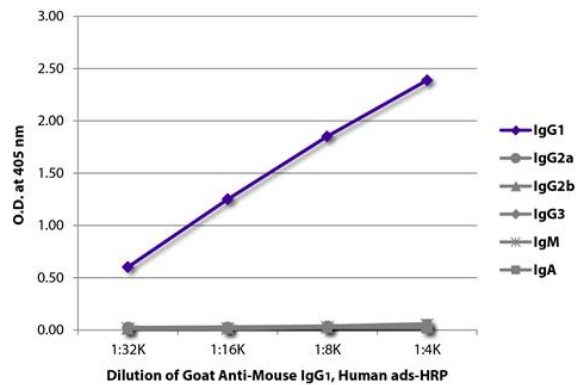
Storage instruction	Aliquot and store in the dark at 2-8°C. Keep protected from prolonged exposure to light. Avoid repeated freeze/thaw cycles. Suggest spin the vial prior to opening. The antibody solution should be gently mixed before use.
Note	For laboratory research only, not for drug, diagnostic or other use.

Images



ARG21886 Goat anti-Mouse IgG1 antibody (HRP) (pre-adsorbed) WB image

Western blot: HL60 total cell lysate stained with [ARG21418](#) anti-Bax antibody [2D2]. Secondary antibodies: ARG21886 Goat anti-Mouse IgG1 antibody (HRP) (pre-adsorbed).



ARG21886 Goat anti-Mouse IgG1 antibody (HRP) (pre-adsorbed) ELISA image

ELISA: The plate was coated with purified Mouse IgG1, IgG2a, IgG2b, IgG3, IgM, and IgA. Immunoglobulins were detected with serially diluted ARG21886 Goat anti-Mouse IgG1 antibody (HRP) (pre-adsorbed).