

ARG21912 Goat anti-Human IgA antibody (Biotin), pre-adsorbed

Package: 500 µg
Store at: 4°C

Summary

Product Description	Biotin-conjugated Goat Polyclonal antibody recognizes Human IgA
Tested Reactivity	Hu
Tested Application	Depletion, ELISA, ELISPOT, FACS, FLISA, ICC/IF, IHC-Fr, IHC-P, IP, Puri, WB
Specificity	The antibody reacts with the heavy chain of Human IgA. The antibody is pre-adsorbed with Human IgG and IgM, so the antibody may not react with Human IgG and IgM, but may react with IgA from other species.
Host	Goat
Clonality	Polyclonal
Isotype	IgG
Target Name	IgA
Species	Human
Conjugation	Biotin

Application Instructions

Pre Adsorbed Human IgG and IgM.

Application table

Application	Dilution
Depletion	Assay-dependent
ELISA	1:5000 - 1:20000
ELISPOT	Assay-dependent
FACS	< 1 ug/10 ⁶ cells
FLISA	Assay-dependent
ICC/IF	Assay-dependent
IHC-Fr	Assay-dependent
IHC-P	Assay-dependent
IP	Assay-dependent
Puri	Assay-dependent
WB	Assay-dependent

Application Note * The dilutions indicate recommended starting dilutions and the optimal dilutions or concentrations should be determined by the scientist.

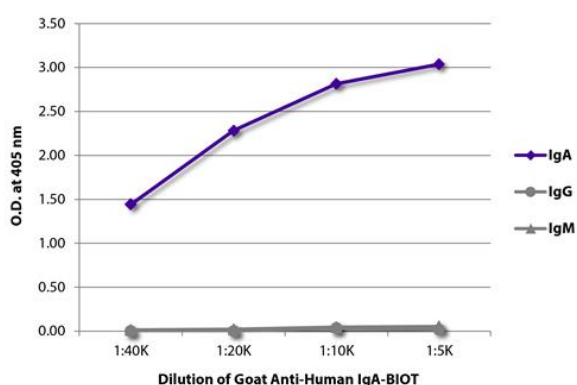
Properties

Form	Liquid
Purification	Affinity purification with immunogen.
Buffer	PBS and 0.1% Sodium azide.
Preservative	0.1% Sodium azide
Concentration	0.5 mg/ml
Storage instruction	Aliquot and store in the dark at 2-8°C. Keep protected from prolonged exposure to light. Avoid repeated freeze/thaw cycles. Suggest spin the vial prior to opening. The antibody solution should be gently mixed before use.
Note	For laboratory research only, not for drug, diagnostic or other use.

Bioinformation

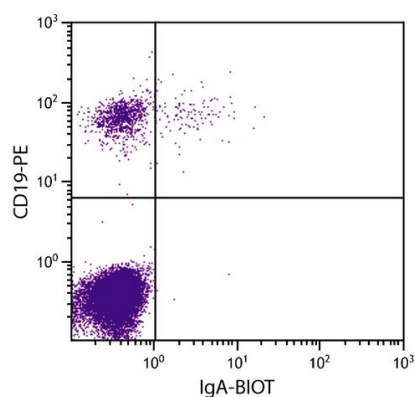
Highlight Related news:
[Comprehensive anti-Human secondary antibodies](#)

Images



ARG21912 Goat anti-Human IgA antibody (Biotin) (pre-adsorbed) ELISA image

ELISA: The plate was coated with purified Human IgA, IgG, and IgM. Immunoglobulins were detected with serially diluted ARG21912 Goat anti-Human IgA antibody (Biotin) (pre-adsorbed) followed by [ARG23912](#) Streptavidin (HRP).



ARG21912 Goat anti-Human IgA antibody (Biotin) (pre-adsorbed) FACS image

Flow Cytometry: Human peripheral blood lymphocytes stained with ARG21912 Goat anti-Human IgA antibody (Biotin) (pre-adsorbed) and [ARG21258](#) anti-CD19 antibody [SJ25-C1] (FITC) followed by Streptavidin (FITC).