

ARG21920
Goat anti-Rabbit IgG (H+L) antibody (Biotin), pre-adsorbedPackage: 500 µg
Store at: 4°C

Summary

Product Description	Biotin-conjugated Goat Polyclonal antibody recognizes Rabbit IgG (H+L)
Tested Reactivity	Rb
Tested Application	ELISA, FACS, FLISA, ICC/IF, IHC-Fr, IHC-P, IHC-Wmt, WB
Specificity	Reacts with the heavy and light chains of rabbit IgG and the light chains of rabbit IgM
Host	Goat
Clonality	Polyclonal
Isotype	IgG
Target Name	IgG (H+L)
Species	Rabbit
Conjugation	Biotin

Application Instructions

Pre Adsorbed Mouse and Human immunoglobulins and pooled sera.

Application table

Application	Dilution
ELISA	1:5000 - 1:20000
FACS	< 1 ug/10 ⁶ cells
FLISA	Assay-dependent
ICC/IF	Assay-dependent
IHC-Fr	Assay-dependent
IHC-P	Assay-dependent
IHC-Wmt	Assay-dependent
WB	Assay-dependent

Application Note * The dilutions indicate recommended starting dilutions and the optimal dilutions or concentrations should be determined by the scientist.

Properties

Form	Liquid
Purification	Affinity purification with immunogen.
Buffer	PBS and 0.1% Sodium azide.
Preservative	0.1% Sodium azide
Concentration	0.5 mg/ml

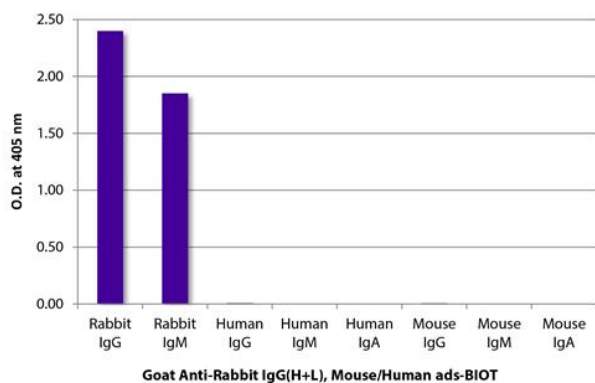
Storage instruction

Aliquot and store in the dark at 2-8°C. Keep protected from prolonged exposure to light. Avoid repeated freeze/thaw cycles. Suggest spin the vial prior to opening. The antibody solution should be gently mixed before use.

Note

For laboratory research only, not for drug, diagnostic or other use.

Images



ARG21920 Goat anti-Rabbit IgG (H+L) antibody (Biotin) (pre-adsorbed) ELISA image

ELISA: The plate was coated with purified rabbit IgG and IgM, Human IgG, IgM, and IgA, and Mouse IgG, IgM, and IgA. Immunoglobulins were detected with ARG21920 Goat anti-Rabbit IgG (H+L) antibody (Biotin) (pre-adsorbed) followed by [ARG23912](#) Streptavidin (HRP).