

ARG21961 Mouse IgG2a Isotype Control antibody [HOPC-1]

Package: 500 µg
Store at: -20°C

Summary

Product Description	Mouse Monoclonal antibody [HOPC-1] as a negative control antibody for Mouse IgG2a
Tested Application	ELISA, FACS, FLISA, ICC/IF, IHC-Fr, IP, WB
Host	Mouse
Clonality	Monoclonal
Clone	HOPC-1
Isotype	IgG2a, lambda
Target Name	Mouse IgG2a
Conjugation	Un-conjugated

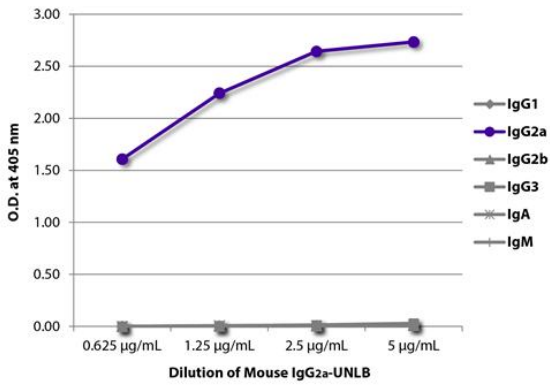
Application Instructions

Application table	Application	Dilution
	ELISA	1 - 5 µg/ml
	FACS	< 1 µg/10 ⁶ cells
	FLISA	Assay-dependent
	ICC/IF	Assay-dependent
	IHC-Fr	Assay-dependent
	IP	Assay-dependent
	WB	Assay-dependent

Application Note * The dilutions indicate recommended starting dilutions and the optimal dilutions or concentrations should be determined by the scientist.

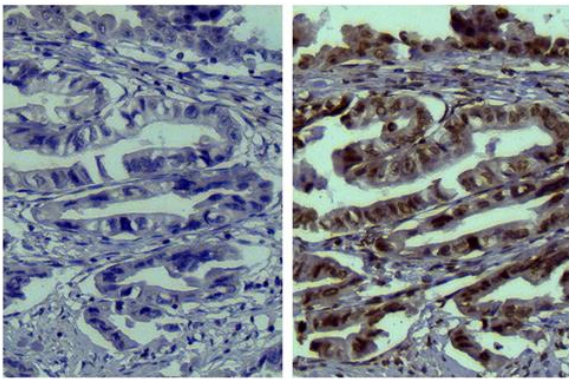
Properties

Form	Liquid
Buffer	BBS (pH 8.2)
Concentration	1 mg/ml
Storage instruction	For continuous use, store undiluted antibody at 2-8°C for up to a week. For long-term storage, aliquot and store at -20°C or below. Storage in frost free freezers is not recommended. Avoid repeated freeze/thaw cycles. Suggest spin the vial prior to opening. The antibody solution should be gently mixed before use.
Note	For laboratory research only, not for drug, diagnostic or other use.



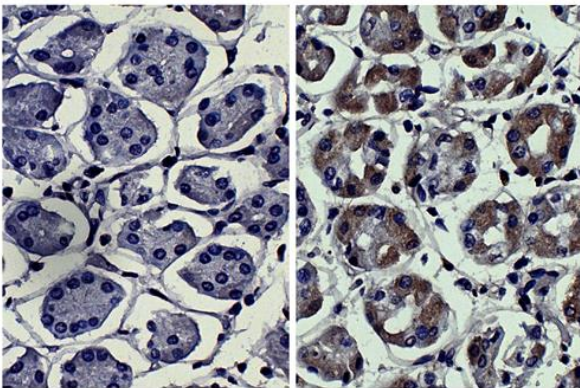
ARG21961 Mouse IgG2a Isotype Control antibody [HOPC-1] ELISA image

ELISA: The plate was coated with serially diluted ARG21961 Mouse IgG2a Isotype Control antibody [HOPC-1]. Immunoglobulin was detected with [ARG21887](#) Goat anti-Mouse IgG1 antibody (Biotin) (pre-adsorbed), [ARG23806](#) Goat anti-Mouse IgG2a antibody (Biotin) (pre-adsorbed), [ARG21895](#) Goat anti-Mouse IgG2b antibody (Biotin) (pre-adsorbed), [ARG21902](#) Goat anti-Mouse IgG3 antibody (Biotin) (pre-adsorbed), [ARG21545](#) Goat anti-Mouse IgA antibody (Biotin) (pre-adsorbed), and [ARG21523](#) Goat anti-Mouse IgM antibody (Biotin) (pre-adsorbed) followed by [ARG23912](#) Streptavidin (HRP) and quantified.



ARG21961 Mouse IgG2a Isotype Control antibody [HOPC-1] control image

Control: Paraffin-embedded Human gastric cancer tissue stained with ARG21961 Mouse IgG2a Isotype Control antibody [HOPC-1] (left) and [ARG22191](#) anti-MMP9 antibody [SB15c] (right), followed by [ARG23705](#) Goat anti-Mouse IgG2a (HRP) (pre-adsorbed), DAB and hematoxylin.



ARG21961 Mouse IgG2a Isotype Control antibody [HOPC-1] control image

Control: Paraffin-embedded Human kidney cancer tissue stained with ARG21961 Mouse IgG2a Isotype Control antibody [HOPC-1] (left) and anti-MMP3 antibody (right) followed by [ARG23705](#) Goat anti-Mouse IgG2a (HRP) (pre-adsorbed), DAB and hematoxylin.