

ARG21967 anti-Collagen I antibody (Biotin), pre-adsorbed

Package: 100 µg
Store at: 4°C

Summary

Product Description	Biotin-conjugated Goat Polyclonal antibody recognizes Collagen I
Tested Reactivity	Hu, Ms, Rat, Bov, Cat, Chk, Dog, Elp, Gpig, Hm, Pig, Rb
Tested Application	ELISA, EM, FACS, FLISA, ICC/IF, IHC-Fr, IHC-P, WB
Specificity	The antibody reacts with conformational determinants on type I collagen. The antibody is pre-adsorbed with Collagen types II, III, IV, V and VI, so the antibody may not react with Collagen types II, III, IV, V and VI.
Host	Goat
Clonality	Polyclonal
Isotype	IgG
Target Name	Collagen I
Species	Human
Immunogen	Human Type I Collagen
Conjugation	Biotin
Alternate Names	O11; O12; O13; O14; EDSC; Collagen alpha-1(I) chain; Alpha-1 type I collagen

Application Instructions

Pre Adsorbed	Collagen types II, III, IV, V and VI.																			
Application table	<table border="1"> <thead> <tr> <th>Application</th> <th>Dilution</th> </tr> </thead> <tbody> <tr> <td>ELISA</td> <td>1:1000 - 1:4000</td> </tr> <tr> <td>EM</td> <td>Assay-dependent</td> </tr> <tr> <td>FACS</td> <td>Assay-dependent</td> </tr> <tr> <td>FLISA</td> <td>Assay-dependent</td> </tr> <tr> <td>ICC/IF</td> <td>Assay-dependent</td> </tr> <tr> <td>IHC-Fr</td> <td>Assay-dependent</td> </tr> <tr> <td>IHC-P</td> <td>Assay-dependent</td> </tr> <tr> <td>WB</td> <td>Assay-dependent</td> </tr> </tbody> </table>		Application	Dilution	ELISA	1:1000 - 1:4000	EM	Assay-dependent	FACS	Assay-dependent	FLISA	Assay-dependent	ICC/IF	Assay-dependent	IHC-Fr	Assay-dependent	IHC-P	Assay-dependent	WB	Assay-dependent
Application	Dilution																			
ELISA	1:1000 - 1:4000																			
EM	Assay-dependent																			
FACS	Assay-dependent																			
FLISA	Assay-dependent																			
ICC/IF	Assay-dependent																			
IHC-Fr	Assay-dependent																			
IHC-P	Assay-dependent																			
WB	Assay-dependent																			
Application Note	* The dilutions indicate recommended starting dilutions and the optimal dilutions or concentrations should be determined by the scientist.																			

Properties

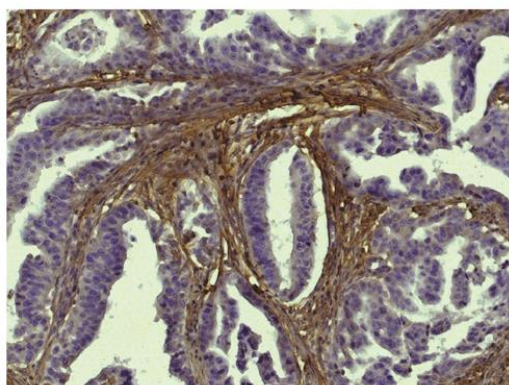
Form	Liquid
------	--------

Purification	Affinity purification with immunogen.
Buffer	PBS and 0.1% Sodium azide.
Preservative	0.1% Sodium azide
Concentration	0.4 mg/ml
Storage instruction	Aliquot and store in the dark at 2-8°C. Keep protected from prolonged exposure to light. Avoid repeated freeze/thaw cycles. Suggest spin the vial prior to opening. The antibody solution should be gently mixed before use.
Note	For laboratory research only, not for drug, diagnostic or other use.

Bioinformation

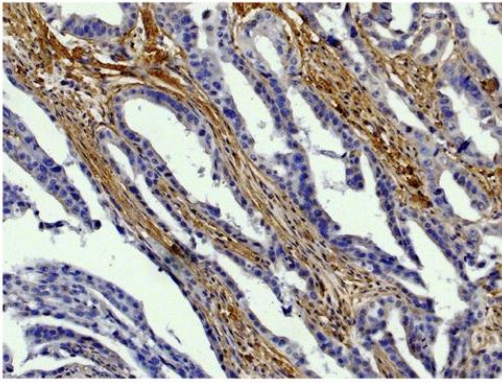
Gene Symbol	COL1A1
Gene Full Name	collagen, type I, alpha 1
Background	This gene encodes the pro-alpha1 chains of type I collagen whose triple helix comprises two alpha1 chains and one alpha2 chain. Type I is a fibril-forming collagen found in most connective tissues and is abundant in bone, cornea, dermis and tendon. Mutations in this gene are associated with osteogenesis imperfecta types I-IV, Ehlers-Danlos syndrome type VIIA, Ehlers-Danlos syndrome Classical type, Caffey Disease and idiopathic osteoporosis. Reciprocal translocations between chromosomes 17 and 22, where this gene and the gene for platelet-derived growth factor beta are located, are associated with a particular type of skin tumor called dermatofibrosarcoma protuberans, resulting from unregulated expression of the growth factor. Two transcripts, resulting from the use of alternate polyadenylation signals, have been identified for this gene. [provided by R. Dagleish, Feb 2008]
Function	Type I collagen is a member of group I collagen (fibrillar forming collagen). [UniProt]
Highlight	Related products: Collagen I antibodies ; Collagen I ELISA Kits ; Collagen I Duos / Panels ; Anti-Goat IgG secondary antibodies ; Related news: New antibody panels for Myofibroblasts and CAFs
Calculated Mw	139 kDa
PTM	Proline residues at the third position of the tripeptide repeating unit (G-X-P) are hydroxylated in some or all of the chains. Proline residues at the second position of the tripeptide repeating unit (G-P-X) are hydroxylated in some of the chains. O-linked glycan consists of a Glc-Gal disaccharide bound to the oxygen atom of a post-translationally added hydroxyl group.

Images



ARG21967 anti-Collagen I antibody (Biotin) (pre-adsorbed) IHC-P image

Immunohistochemistry: Paraffin-embedded Human gastric cancer tissue stained with ARG21967 anti-Collagen I antibody (Biotin) (pre-adsorbed) followed by [ARG23912](#) Streptavidin (HRP), DAB and hematoxylin.



ARG21967 anti-Collagen I antibody (Biotin) (pre-adsorbed) IHC-P image

Immunohistochemistry: Paraffin-embedded Human gastric cancer tissue stained with ARG21967 anti-Collagen I antibody (Biotin) (pre-adsorbed) followed by [ARG23912](#) Streptavidin (HRP), DAB and hematoxylin.