

ARG22133 anti-FITC antibody (PE)

Package: 250 µg
Store at: 4°C

Summary

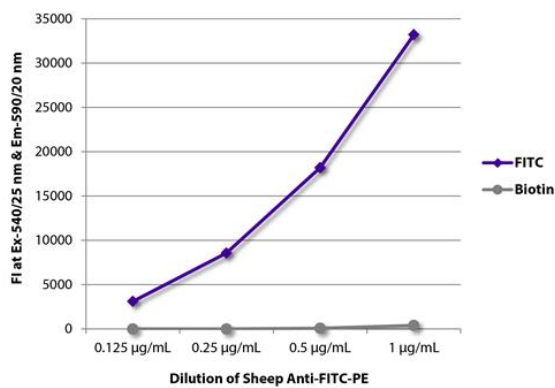
Product Description	PE-conjugated Sheep Polyclonal antibody recognizes FITC
Tested Reactivity	Chem
Tested Application	FACS, FLISA, IHC-Fr
Specificity	Reacts with fluorescein isothiocyanate (FITC)
Host	Sheep
Clonality	Polyclonal
Isotype	IgG
Target Name	FITC
Species	Others
Immunogen	Fluorescein isothiocyanate (Isomer I)
Conjugation	PE

Application Instructions

Application table	Application	Dilution
	FACS	< 0.1 µg/ml
	FLISA	< 1 µg/ml
	IHC-Fr	Assay-dependent
Application Note	* The dilutions indicate recommended starting dilutions and the optimal dilutions or concentrations should be determined by the scientist.	

Properties

Form	Liquid
Purification	Affinity purification with immunogen.
Buffer	PBS, 0.1% Sodium azide and Sucrose.
Preservative	0.1% Sodium azide
Stabilizer	Sucrose
Concentration	0.5 mg/ml
Storage instruction	Aliquot and store in the dark at 2-8°C. Keep protected from prolonged exposure to light. Avoid repeated freeze/thaw cycles. Suggest spin the vial prior to opening. The antibody solution should be gently mixed before use.
Note	For laboratory research only, not for drug, diagnostic or other use.



ARG22133 anti-FITC antibody (PE) FLISA image

FLISA: The plate was coated with Goat anti-Human IgG antibody (FITC) and [ARG21905](#) Goat anti-Human IgG antibody (Biotin) (pre-adsorbed). FITC and biotin conjugated antibodies were detected with serially diluted ARG22133 anti-FITC antibody (PE).