

ARG22183 anti-CD107b / LAMP2 antibody [H4B4]

Package: 100 µg
Store at: -20°C

Summary

| | |
|---------------------|---|
| Product Description | Mouse Monoclonal antibody [H4B4] recognizes CD107b / LAMP2 |
| Tested Reactivity | Hu, AGMK, R. Mk |
| Tested Application | EM, FACS, ICC/IF, IHC-Fr, IHC-P, IP, Puri, WB |
| Specificity | Human/Rhesus/African Green Monkey CD107b |
| Host | Mouse |
| Clonality | Monoclonal |
| Clone | H4B4 |
| Isotype | IgG1, kappa |
| Target Name | CD107b / LAMP2 |
| Species | Human |
| Immunogen | Human adherent peripheral blood cells |
| Conjugation | Un-conjugated |
| Alternate Names | CD antigen CD107b; LAMPB; CD107b; LGP110; Lysosome-associated membrane glycoprotein 2; LAMP-2; CD107 antigen-like family member B; Lysosome-associated membrane protein 2 |

Application Instructions

| Application table | Application | Dilution |
|-------------------|--|------------------------------|
| | EM | Assay-dependent |
| | FACS | < 1 µg/10 ⁶ cells |
| | ICC/IF | Assay-dependent |
| | IHC-Fr | Assay-dependent |
| | IHC-P | Assay-dependent |
| | IP | Assay-dependent |
| | Puri | Assay-dependent |
| | WB | Assay-dependent |
| | Application Note IHC-P: Antigen retrieval: Heat tissue section in a microwave oven in 10mM Sodium citrate buffer (pH 6.0) twice for 10 min. * The dilutions indicate recommended starting dilutions and the optimal dilutions or concentrations should be determined by the scientist. | |

Properties

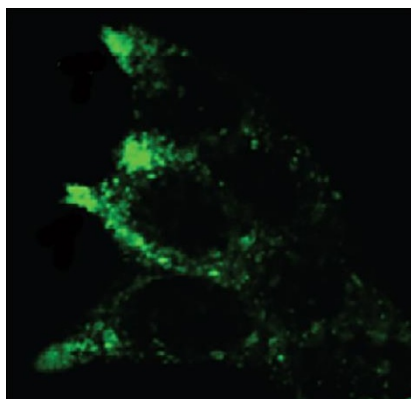
| | |
|------|--------|
| Form | Liquid |
|------|--------|

| | |
|---------------------|---|
| Buffer | BBS (pH 8.2) |
| Concentration | 0.1 mg/ml |
| Storage instruction | For continuous use, store undiluted antibody at 2-8°C for up to a week. For long-term storage, aliquot and store at -20°C. Storage in frost free freezers is not recommended. Avoid repeated freeze/thaw cycles. Suggest spin the vial prior to opening. The antibody solution should be gently mixed before use. |
| Note | For laboratory research only, not for drug, diagnostic or other use. |

Bioinformation

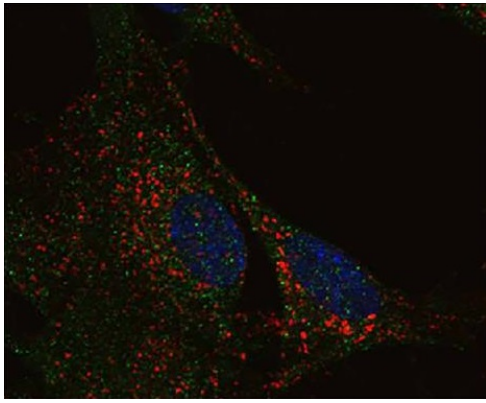
| | |
|----------------|--|
| Database links | GeneID: 3920 Human Swiss-port # P13473 Human |
| Gene Symbol | LAMP2 |
| Gene Full Name | lysosomal-associated membrane protein 2 |
| Background | The protein encoded by this gene is a member of a family of membrane glycoproteins. This glycoprotein provides selectins with carbohydrate ligands. It may play a role in tumor cell metastasis. It may also function in the protection, maintenance, and adhesion of the lysosome. Alternative splicing of this gene results in multiple transcript variants encoding distinct proteins. [provided by RefSeq, Jul 2008] |
| Function | Implicated in tumor cell metastasis. May function in protection of the lysosomal membrane from autodigestion, maintenance of the acidic environment of the lysosome, adhesion when expressed on the cell surface (plasma membrane), and inter- and intracellular signal transduction. Protects cells from the toxic effects of methylating mutagens. [UniProt] |
| Calculated Mw | 45 kDa |
| PTM | O- and N-glycosylated; some of the 16 N-linked glycans are polylactosaminoglycans. |

Images



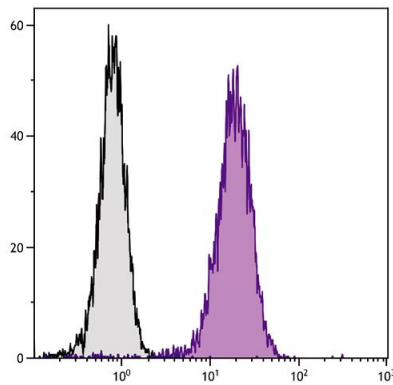
ARG22183 anti-CD107b / LAMP2 antibody [H4B4] ICC/IF image

Immunofluorescence: MYH1 siRNA transfected MCF7 cells stained with ARG22183 anti-CD107b / LAMP2 antibody [H4B4].



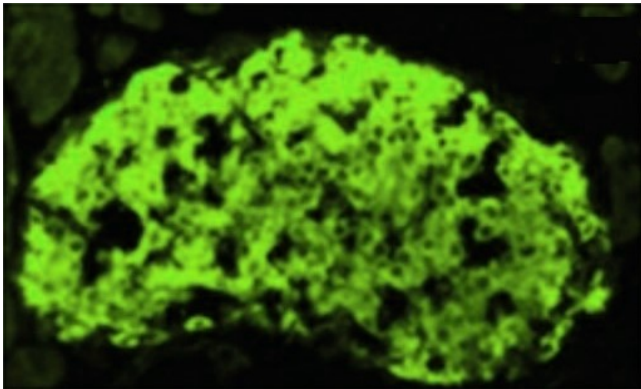
ARG22183 anti-CD107b / LAMP2 antibody [H4B4] ICC/IF image

Immunofluorescence: RA differentiated SH-SY5Y neuroblastoma cells stained with ARG22183 anti-CD107b / LAMP2 antibody [H4B4] and anti-Aβ40, followed by AF546 and AF488 conjugated secondary antibodies and DAPI.



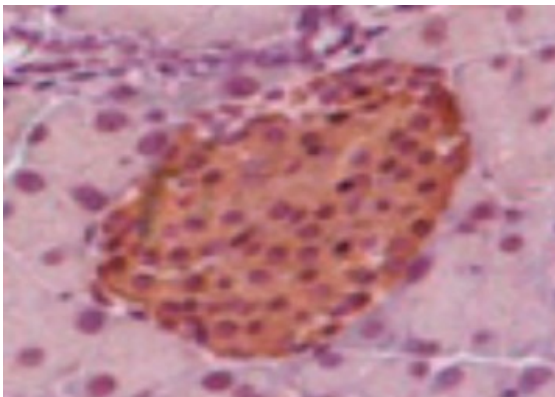
ARG22183 anti-CD107b / LAMP2 antibody [H4B4] FACS image

Flow Cytometry: Jurkat cells was intracellularly stained with ARG22183 anti-CD107b / LAMP2 antibody [H4B4], followed by ARG21884 Goat anti-Mouse IgG1 antibody (FITC), pre-adsorbed.



ARG22183 anti-CD107b / LAMP2 antibody [H4B4] IHC-Fr image

Immunohistochemistry: Frozen section of Mouse pancreas islets stained with ARG22183 anti-CD107b / LAMP2 antibody [H4B4] at 1:50 dilution.



ARG22183 anti-CD107b / LAMP2 antibody [H4B4] IHC-P image

Immunohistochemistry: Paraffin-embedded Mouse pancreas islets stained with ARG22183 anti-CD107b / LAMP2 antibody [H4B4] at 1:100 dilution. Antigen retrieval: Heat tissue section in a microwave oven in 10mM Sodium citrate buffer (pH 6.0) twice for 10 min.