

ARG22198 anti-NHE3 antibody

Package: 50 µg
Store at: -20°C

Summary

Product Description	Rabbit Polyclonal antibody recognizes NHE3
Tested Reactivity	Ms, Rat
Tested Application	ICC/IF, WB
Specificity	Detects ~84kDa.
Host	Rabbit
Clonality	Polyclonal
Target Name	NHE3
Species	Rat
Immunogen	Synthetic peptide around aa. 809 to 831 of Rat NHE3
Conjugation	Un-conjugated
Alternate Names	Sodium/hydrogen exchanger 3; Na ⁺ /H ⁺ ; Solute carrier family 9 member 3; NHE-3; NHE3

Application Instructions

Application table	Application	Dilution
	ICC/IF	Assay-dependent
	WB	1:1000
Application Note	* The dilutions indicate recommended starting dilutions and the optimal dilutions or concentrations should be determined by the scientist.	

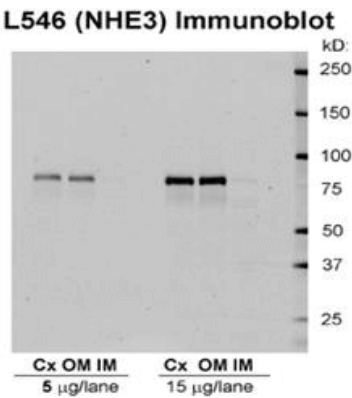
Properties

Form	Liquid
Purification	Purification with Protein A.
Buffer	PBS, 0.09% Sodium azide and 50% Glycerol
Preservative	0.09% Sodium azide
Stabilizer	50% Glycerol
Concentration	1 mg/ml
Storage instruction	For continuous use, store undiluted antibody at 2-8°C for up to a week. For long-term storage, aliquot and store at -20°C. Storage in frost free freezers is not recommended. Avoid repeated freeze/thaw cycles. Suggest spin the vial prior to opening. The antibody solution should be gently mixed before use.
Note	For laboratory research only, not for drug, diagnostic or other use.

Bioinformation

Database links	GeneID: 24784 Rat Swiss-port # P26433 Rat
Gene Symbol	Slc9a3
Gene Full Name	solute carrier family 9, subfamily A (NHE3, cation proton antiporter 3), member 3
Function	Involved in pH regulation to eliminate acids generated by active metabolism or to counter adverse environmental conditions. Major proton extruding system driven by the inward sodium ion chemical gradient. Plays an important role in signal transduction. [UniProt]
Calculated Mw	93 kDa
PTM	Phosphorylated by PKA, which inhibits activity. Phosphorylation at Ser-663 by SGK1 is associated with increased abundance at the cell membrane.
Cellular Localization	Membrane

Images



ARG22198 anti-NHE3 antibody WB image

Western blot: Rat kidney tissue lysates stained with ARG22198 anti-NHE3 antibody at 1:1000 dilution.