

ARG22205 anti-Calnexin antibody

Package: 100 µl

Store at: -20°C

Summary

Product Description	Rabbit Polyclonal antibody recognizes Calnexin
Tested Reactivity	Hu, Ms, Rat, Bird, Bov, Chk, Dm, Dog, Gpig, Hm, Mk, Pig, Rb, Sheep, Xenopus laevis
Tested Application	ICC/IF, IHC-P, WB
Specificity	Detects the C-terminal domain of Calnexin ~90kDa. Weak detection in Chicken, Drosophila, and Xenopus tissues.
Host	Rabbit
Clonality	Polyclonal
Target Name	Calnexin
Species	Dog
Immunogen	KLH-conjugated synthetic peptide around the C-terminus of Dog calnexin. Identical to Human, Mouse and Rat calnexin sequences over these residues.
Conjugation	Un-conjugated
Alternate Names	P90; CNX; p90; Major histocompatibility complex class I antigen-binding protein p88; Calnexin; IP90

Application Instructions

Application table	Application	Dilution
	ICC/IF	1:100
	IHC-P	1:100
	WB	1:1000
Application Note	* The dilutions indicate recommended starting dilutions and the optimal dilutions or concentrations should be determined by the scientist.	

Properties

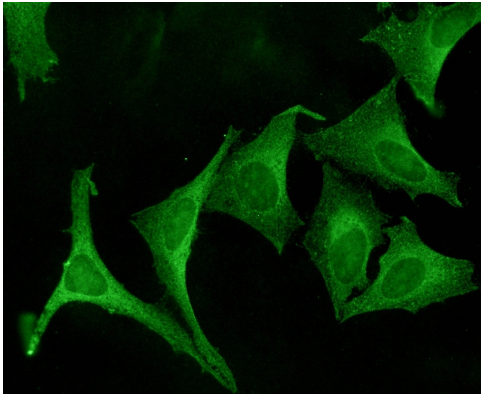
Form	Liquid
Purification	Affinity purification with immunogen.
Buffer	PBS (pH 7.4), 0.09% Sodium azide and 50% Glycerol
Preservative	0.09% Sodium azide
Stabilizer	50% Glycerol
Concentration	1 mg/ml
Storage instruction	For continuous use, store undiluted antibody at 2-8°C for up to a week. For long-term storage, aliquot and store at -20°C. Storage in frost free freezers is not recommended. Avoid repeated freeze/thaw cycles. Suggest spin the vial prior to opening. The antibody solution should be gently mixed before use.

Note For laboratory research only, not for drug, diagnostic or other use.

Bioinformation

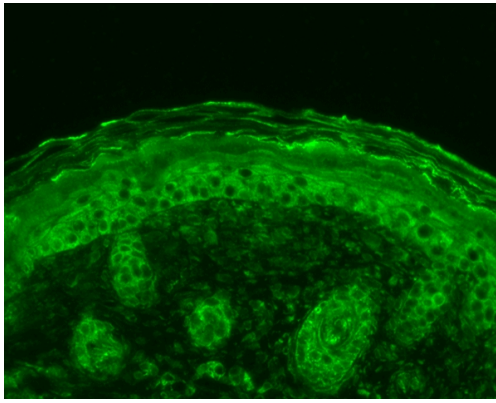
Gene Symbol	CANX
Gene Full Name	calnexin
Background	This gene encodes a member of the calnexin family of molecular chaperones. The encoded protein is a calcium-binding, endoplasmic reticulum (ER)-associated protein that interacts transiently with newly synthesized N-linked glycoproteins, facilitating protein folding and assembly. It may also play a central role in the quality control of protein folding by retaining incorrectly folded protein subunits within the ER for degradation. Alternatively spliced transcript variants encoding the same protein have been described. [provided by RefSeq, Jul 2008]
Function	Calcium-binding protein that interacts with newly synthesized glycoproteins in the endoplasmic reticulum. It may act in assisting protein assembly and/or in the retention within the ER of unassembled protein subunits. It seems to play a major role in the quality control apparatus of the ER by the retention of incorrectly folded proteins. Associated with partial T-cell antigen receptor complexes that escape the ER of immature thymocytes, it may function as a signaling complex regulating thymocyte maturation. Additionally it may play a role in receptor-mediated endocytosis at the synapse. [UniProt]
Highlight	Related products: Calnexin antibodies; Anti-Rabbit IgG secondary antibodies; Related poster download: Organelle Markers & Loading Control
Calculated Mw PTM	C-terminal domain of Calnexin: ~ 90 kDa Phosphorylated at Ser-564 by MAPK3/ERK1. phosphorylation by MAPK3/ERK1 increases its association with ribosomes (By similarity). Palmitoylation by DHHC6 leads to the preferential localization to the perinuclear rough ER. It mediates the association of calnexin with the ribosome-translocon complex (RTC) which is required for efficient folding of glycosylated proteins.
Cellular Localization	Ubiquitinated, leading to proteasomal degradation. Probably ubiquitinated by ZNRF4. Cytoplasm, Endoplasmic Reticulum, Endoplasmic reticulum lumen, Melanosome

Images



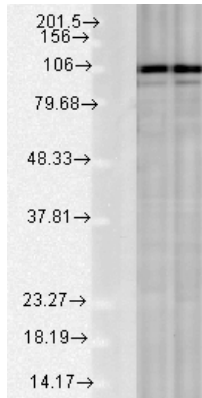
ARG22205 anti-Calnexin antibody ICC/IF image

Immunocytochemistry: Human HeLa cells stained with ARG22205 anti-Calnexin antibody.



ARG22205 anti-Calnexin antibody IHC image

Immunohistochemistry: Bouin solution fixed Mouse backskin stained with ARG22205 anti-Calnexin antibody (green) at 1:100 dilution (1 hour).



ARG22205 anti-Calnexin antibody WB image

Western blot: Rat Tissue lysates stained with ARG22205 anti-Calnexin antibody at 1:1000 dilution.



ARG22205 anti-Calnexin antibody WB image

Western blot: Human HeLa cell lysates stained with ARG22205 anti-Calnexin antibody at 1:1000 dilution.