

ARG22207 anti-Hsp 47 antibody [1C4-1A6]

Package: 100 µg

Store at: -20°C

Summary

Product Description	Mouse Monoclonal antibody [1C4-1A6] recognizes Hsp 47
Tested Reactivity	Hu
Tested Application	ICC/IF, WB
Host	Mouse
Clonality	Monoclonal
Clone	1C4-1A6
Isotype	IgG1, kappa
Target Name	Hsp 47
Species	Human
Immunogen	Full length Human HSP47
Conjugation	Un-conjugated
Alternate Names	SERPINH1; Serpin Family H Member 1; HSP47; SERPINH2; CBP1; CBP2; Serine (Or Cysteine) Proteinase Inhibitor, Clade H (Heat Shock Protein 47), Member 1, (Collagen Binding Protein 1); Serpin Peptidase Inhibitor, Clade H (Heat Shock Protein 47), Member 1, (Collagen Binding Protein 1); Cell Proliferation-Inducing Gene 14 Protein; Rheumatoid Arthritis-Related Antigen RA-A47; Arsenic-Transactivated Protein 3; Collagen Binding Protein 1; 47 KDa Heat Shock Protein; Heat Shock Protein 47; Serpin H1; Colligin; AsTP3; Serine (Or Cysteine) Proteinase Inhibitor, Clade H (Heat Shock Protein 47), Member 2, (Collagen-Binding Protein 2); Serine (Or Cysteine) Proteinase Inhibitor, Clade H (Heat Shock Protein 47), Member 2; Rheumatoid Arthritis Antigen A-47; Collagen-Binding Protein; Colligin-1; Colligin-2; RA-A47; PIG14; PPROM; OI10; Gp46

Application Instructions

Application table	Application	Dilution
	ICC/IF	1:100
	WB	1:1000
Application Note	* The dilutions indicate recommended starting dilutions and the optimal dilutions or concentrations should be determined by the scientist.	

Properties

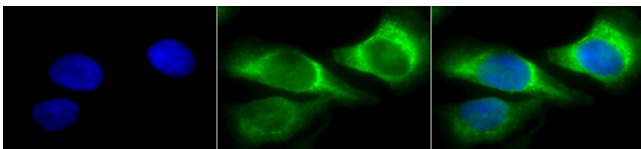
Form	Liquid
Purification	Purification with Protein G.
Buffer	PBS (pH 7.4), 0.09% Sodium azide and 50% Glycerol
Preservative	0.09% Sodium azide
Stabilizer	50% Glycerol

Concentration	1 mg/ml
Storage instruction	For continuous use, store undiluted antibody at 2-8°C for up to a week. For long-term storage, aliquot and store at -20°C. Storage in frost free freezers is not recommended. Avoid repeated freeze/thaw cycles. Suggest spin the vial prior to opening. The antibody solution should be gently mixed before use.
Note	For laboratory research only, not for drug, diagnostic or other use.

Bioinformation

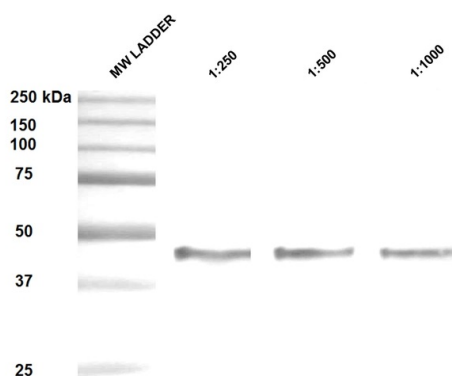
Database links	GeneID: 871 Human Swiss-port # P50454 Human
Gene Symbol	SERPINH1
Gene Full Name	Serpin Family H Member 1
Background	This gene encodes a member of the serpin superfamily of serine proteinase inhibitors. The encoded protein is localized to the endoplasmic reticulum and plays a role in collagen biosynthesis as a collagen-specific molecular chaperone. Autoantibodies to the encoded protein have been found in patients with rheumatoid arthritis. Expression of this gene may be a marker for cancer, and nucleotide polymorphisms in this gene may be associated with preterm birth caused by preterm premature rupture of membranes. Alternatively spliced transcript variants have been observed for this gene, and a pseudogene of this gene is located on the short arm of chromosome 9. [provided by RefSeq, May 2011]
Function	Binds specifically to collagen. Could be involved as a chaperone in the biosynthetic pathway of collagen. [UniProt]
Calculated Mw	46 kDa
PTM	Acetylation; Glycoprotein Phosphoprotein. [UniProt]
Cellular Localization	Endoplasmic reticulum. [UniProt]

Images



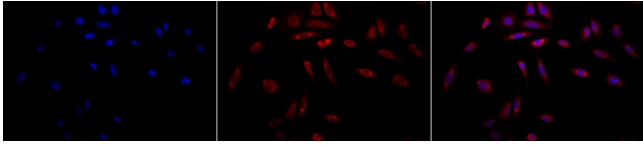
ARG22207 anti-Hsp 47 antibody [1C4-1A6] ICC/IF image

Immunocytochemistry: 2% Formaldehyde (20 min at RT) fixed Heat Shocked HeLa cells stained with ARG22207 anti-Hsp 47 antibody [1C4-1A6] (green) at 1:100 dilution (12 hours at 4°C). Counterstain: DAPI (blue) nuclear stain at 1:40000 for 120 min at RT. Magnification: 100x. Left: DAPI (blue) nuclear stain, Middle: Primary antibody, Right: Composite.



ARG22207 anti-Hsp 47 antibody [1C4-1A6] WB image

Western blot: 1) MW ladder, 20 µg of A431 lysates stained with ARG22207 anti-Hsp 47 antibody [1C4-1A6] (TBS for 60 min at RT) at 2) 1:250, 3) 1:500, or 4) 1:1000 dilutions. Block: 5% milk + TBST 1hr at RT.



ARG22207 anti-Hsp 47 antibody [1C4-1A6] ICC/IF image

Immunocytochemistry: 2% Formaldehyde (20 min at RT) fixed Heat Shocked HeLa cells stained with ARG22207 anti-Hsp 47 antibody [1C4-1A6] (red) at 1:100 dilution (12 hours at 4°C). Counterstain: DAPI (blue) nuclear stain at 1:40000 for 120 min at RT. Magnification: 20x. Left: DAPI (blue) nuclear stain, Middle: Primary antibody, Right: Composite.
