

ARG22270 anti-AHA1 antibody [25F2.D10]

Package: 50 µg
Store at: -20°C

Summary

Product Description	Rat Monoclonal antibody [25F2.D10] recognizes AHA1
Tested Reactivity	Hu, Ms, Rat
Tested Application	ELISA, ICC/IF, IHC-P, IP, WB
Specificity	Detects ~38kDa. Can run up to 45kDa on SDS Page.
Host	Rat
Clonality	Monoclonal
Clone	25F2.D10
Isotype	IgG2a, kappa
Target Name	AHA1
Species	Mouse
Immunogen	Mouse Aha1
Conjugation	Un-conjugated
Alternate Names	C14orf3; p38; AHA1; Activator of 90 kDa heat shock protein ATPase homolog 1

Application Instructions

Application table	Application	Dilution
	ELISA	Assay-dependent
	ICC/IF	1:1000
	IHC-P	Assay-dependent
	IP	1:1000
	WB	1:1000
Application Note	* The dilutions indicate recommended starting dilutions and the optimal dilutions or concentrations should be determined by the scientist.	

Properties

Form	Liquid
Purification	Purification with Protein G.
Buffer	0.02M potassium phosphate (pH 7.2) and 0.15M sodium chloride
Concentration	1.59 mg/ml
Storage instruction	For continuous use, store undiluted antibody at 2-8°C for up to a week. For long-term storage, aliquot and store at -20°C or below. Storage in frost free freezers is not recommended. Avoid repeated freeze/thaw cycles. Suggest spin the vial prior to opening. The antibody solution should be gently mixed

before use.

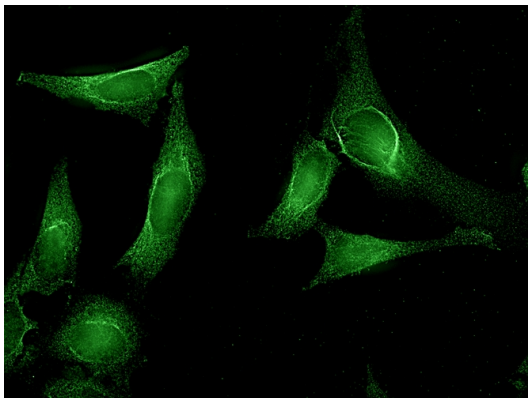
Note

For laboratory research only, not for drug, diagnostic or other use.

Bioinformation

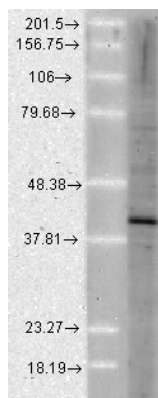
Database links	GeneID: 10598 Human GeneID: 217737 Mouse Swiss-port # O95433 Human Swiss-port # Q8BK64 Mouse
Gene Symbol	Ahsa1
Gene Full Name	AHA1, activator of heat shock protein ATPase 1
Function	Cochaperone that stimulates HSP90 ATPase activity (By similarity). May affect a step in the endoplasmic reticulum to Golgi trafficking. [UniProt]
Calculated Mw	38 kDa
Cellular Localization	Cytoplasm, Endoplasmic Reticulum

Images



ARG22270 anti-AHA1 antibody [25F2.D10] ICC/IF image

Immunocytochemistry: HeLa cells stained with ARG22270 anti-AHA1 antibody [25F2.D10] at 1:1000 dilution.

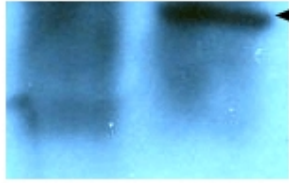


ARG22270 anti-AHA1 antibody [25F2.D10] WB image

Western blot: Human cell lysates stained with ARG22270 anti-AHA1 antibody [25F2.D10] at 1:1000 dilution.

Control IP

36kD -



Aha1

ARG22270 anti-AHA1 antibody [25F2.D10] IP image

Immunoprecipitation: Human HeLa cells immunoprecipitated and stained with ARG22270 anti-AHA1 antibody [25F2.D10].