

ARG22328 anti-Ly49I antibody [YLI-90] (PE)

Package: 50 µg
Store at: 4°C

Summary

Product Description	PE-conjugated Mouse Monoclonal antibody [YLI-90] recognizes Ly49I
Tested Reactivity	Ms
Tested Application	FACS
Specificity	Mouse Ly-49I
Host	Mouse
Clonality	Monoclonal
Clone	YLI-90
Isotype	IgG1, kappa
Target Name	Ly49I
Species	Mouse
Immunogen	CHO-K1 cells transfected with B6 allele of Ly49I gene
Conjugation	PE
Alternate Names	Ly49I; LY49I1

Application Instructions

Application table	Application	Dilution
	FACS	< 0.2 µg/10 ⁶ cells
Application Note	* The dilutions indicate recommended starting dilutions and the optimal dilutions or concentrations should be determined by the scientist.	

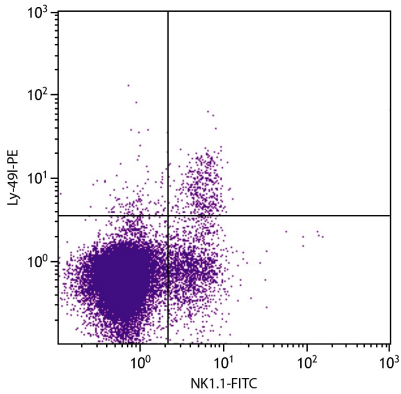
Properties

Form	Liquid
Buffer	PBS, 0.1% Sodium azide and Sucrose.
Preservative	0.1% Sodium azide
Stabilizer	Sucrose
Concentration	0.1 mg/ml
Storage instruction	Aliquot and store in the dark at 2-8°C. Keep protected from prolonged exposure to light. Avoid repeated freeze/thaw cycles. Suggest spin the vial prior to opening. The antibody solution should be gently mixed before use.
Note	For laboratory research only, not for drug, diagnostic or other use.

Bioinformation

Gene Symbol	Klra9
Gene Full Name	killer cell lectin-like receptor subfamily A, member 9
Function	Receptor on natural killer (NK) cells for class I MHC. [UniProt]
Calculated Mw	31 kDa

Images



ARG22328 anti-Ly49I antibody [YLI-90] (PE) FACS image

Flow Cytometry: C57BL/6 Mouse splenocytes stained with ARG22328 anti-Ly49I antibody [YLI-90] (PE) and ARG22072 anti-NK1.1 / CD161bc antibody [PK136] (FITC).