

## ARG22349 anti-CD105 / Endoglin antibody [SN6] (FITC)

Package: 50 tests

Store at: 4°C

### Summary

Product Description	FITC-conjugated Mouse Monoclonal antibody [SN6] recognizes CD105 / Endoglin
Tested Reactivity	Hu, Hrs
Tested Application	FACS, ICC/IF, IHC-Fr, IHC-P, WB
Specificity	Human CD105
Host	Mouse
Clonality	Monoclonal
Clone	SN6
Isotype	IgG1, kappa
Target Name	CD105 / Endoglin
Species	Human
Immunogen	Antigen preparation isolated from cell membranes of leukemia cells derived from a patient with non-T/non-B-cell acute lymphoblastic leukemia.
Conjugation	FITC
Alternate Names	CD antigen CD105; HHT1; Endoglin; ORW1; END

### Application Instructions

Application table	Application	Dilution
	FACS	10 ul/10 <sup>6</sup> cells
	ICC/IF	Assay-dependent
	IHC-Fr	Assay-dependent
	IHC-P	Assay-dependent
	WB	Assay-dependent

**Application Note** WB: Under non-reducing condition.  
\* The dilutions indicate recommended starting dilutions and the optimal dilutions or concentrations should be determined by the scientist.

### Properties

Form	Liquid
Buffer	PBS and 0.1% Sodium azide.
Preservative	0.1% Sodium azide
Storage instruction	Aliquot and store in the dark at 2-8°C. Keep protected from prolonged exposure to light. Avoid repeated freeze/thaw cycles. Suggest spin the vial prior to opening. The antibody solution should be gently mixed before use.

Note

For laboratory research only, not for drug, diagnostic or other use.

## Bioinformation

Database links

[GeneID: 2022 Human](#)

[Swiss-port # P17813 Human](#)

Gene Symbol

ENG

Gene Full Name

endoglin

Background

This gene encodes a homodimeric transmembrane protein which is a major glycoprotein of the vascular endothelium. This protein is a component of the transforming growth factor beta receptor complex and it binds to the beta1 and beta3 peptides with high affinity. Mutations in this gene cause hereditary hemorrhagic telangiectasia, also known as Osler-Rendu-Weber syndrome 1, an autosomal dominant multisystemic vascular dysplasia. This gene may also be involved in preeclampsia and several types of cancer. Alternatively spliced transcript variants encoding different isoforms have been found for this gene. [provided by RefSeq, May 2013]

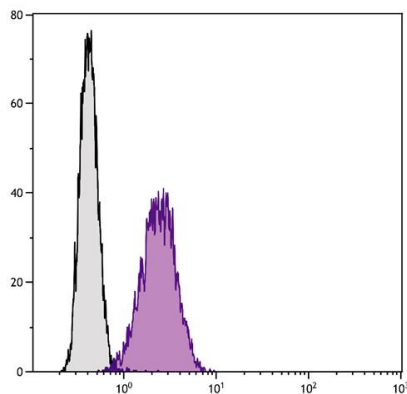
Function

Major glycoprotein of vascular endothelium. Involved in the regulation of angiogenesis. May play a critical role in the binding of endothelial cells to integrins and/or other RGD receptors. Acts as TGF-beta coreceptor and is involved in the TGF-beta/BMP signaling cascade. Required for GDF2/BMP9 signaling through SMAD1 in endothelial cells and modulates TGF-beta1 signaling through SMAD3. [UniProt]

Calculated Mw

71 kDa

## Images



ARG22349 anti-CD105 / Endoglin antibody [SN6] (FITC) FACS image

Flow Cytometry: Human histiocytic lymphoma cell line U-937 was stained with ARG22349 anti-CD105 / Endoglin antibody [SN6] (FITC).