

ARG22372
anti-CD206 / MMR antibodyPackage: 50 µg
Store at: -20°C

Summary

Product Description	Rabbit Polyclonal antibody recognizes CD206 / MMR
Tested Reactivity	Hu, Ms, Rat, Pig
Tested Application	ICC/IF, IHC-P, WB
Host	Rabbit
Clonality	Polyclonal
Isotype	IgG
Target Name	CD206 / MMR
Species	Human
Immunogen	KLH-conjugated synthetic peptide from Human CD206 / MMR.
Conjugation	Un-conjugated
Alternate Names	CLEC13D; C-type lectin domain family 13 member D; Macrophage mannose receptor 1-like protein 1; C-type lectin domain family 13 member D-like; MMR; CLEC13DL; CD206; Macrophage mannose receptor 1; bA541I19.1; CD antigen CD206; MRC1L1

Application Instructions

Application table	Application	Dilution
	ICC/IF	1:400
	IHC-P	1:100 - 1:500
	WB	1:300 - 1:1000

Application Note * The dilutions indicate recommended starting dilutions and the optimal dilutions or concentrations should be determined by the scientist.

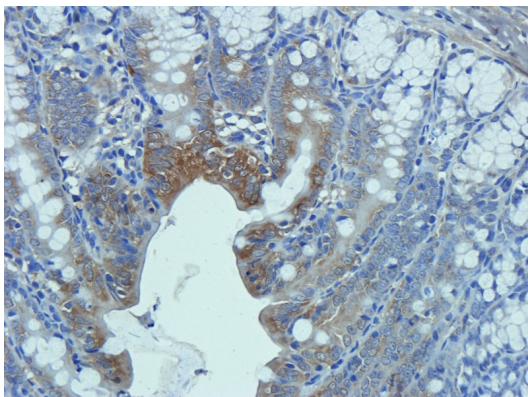
Properties

Form	Liquid
Purification	Affinity purification with immunogen.
Buffer	PBS and 0.02% Sodium azide.
Preservative	0.02% Sodium azide
Concentration	0.5 mg/ml
Storage instruction	For continuous use, store undiluted antibody at 2-8°C for up to a week. For long-term storage, aliquot and store at -20°C or below. Storage in frost free freezers is not recommended. Avoid repeated freeze/thaw cycles. Suggest spin the vial prior to opening. The antibody solution should be gently mixed before use.
Note	For laboratory research only, not for drug, diagnostic or other use.

Bioinformation

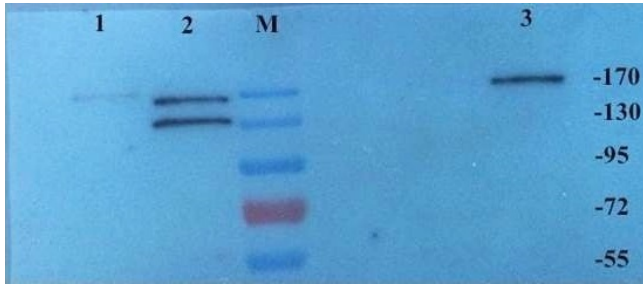
Database links	GeneID: 17533 Mouse GeneID: 4360 Human Swiss-port # P22897 Human Swiss-port # Q61830 Mouse
Gene Symbol	MRC1
Gene Full Name	mannose receptor, C type 1
Background	The recognition of complex carbohydrate structures on glycoproteins is an important part of several biological processes, including cell-cell recognition, serum glycoprotein turnover, and neutralization of pathogens. CD206 / MMR is a type I membrane receptor that mediates the endocytosis of glycoproteins by macrophages. The protein has been shown to bind high-mannose structures on the surface of potentially pathogenic viruses, bacteria, and fungi so that they can be neutralized by phagocytic engulfment. [provided by RefSeq, Sep 2015]
Function	CD206 / MMR mediates the endocytosis of glycoproteins by macrophages. Binds both sulfated and non-sulfated polysaccharide chains. (Microbial infection) Acts as phagocytic receptor for bacteria, fungi and other pathogens. (Microbial infection) Acts as a receptor for Dengue virus envelope protein E. (Microbial infection) Interacts with Hepatitis B virus envelope protein. [UniProt]
Highlight	Related products: CD206 antibodies ; CD206 ELISA Kits ; CD206 Duos / Panels ; Anti-Rabbit IgG secondary antibodies ; Related news: Tumor-Infiltrating Lymphocytes (TILs) New antibody panels and duos for Tumor immune microenvironment Anti-SerpinB9 therapy, a new strategy for cancer therapy RIP1 activation and pathogenesis of NASH
Research Area	Immune System antibody; M1/M2/TAM Marker antibody; Macrophage Marker antibody; M2 Macrophage Marker antibody
Calculated Mw	166 kDa

Images



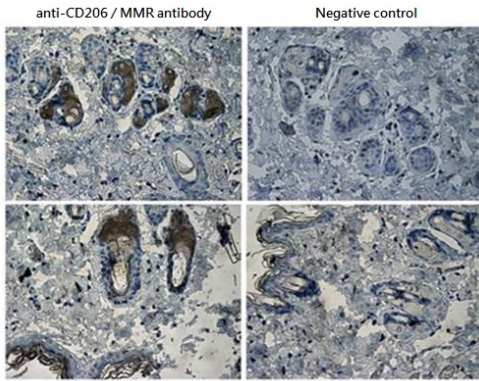
ARG22372 anti-CD206 / MMR antibody IHC-P image

Immunohistochemistry: Paraffin-embedded Rat colon tissue stained with ARG22372 anti-CD206 / MMR antibody at 5 µg/ml dilution.



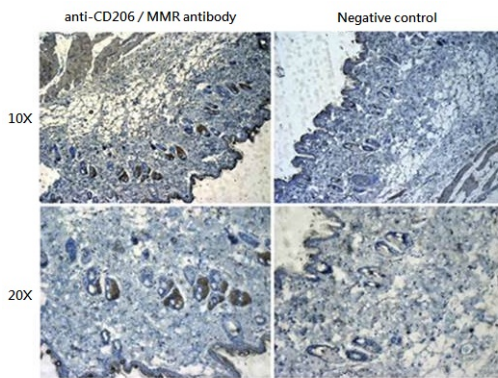
ARG22372 anti-CD206 / MMR antibody WB image

Western blot: 1) Rat brain, 2) Rat kidney, and 3) Mouse brain tissue stained with ARG22372 anti-CD206 / MMR antibody at 1:500 dilution.



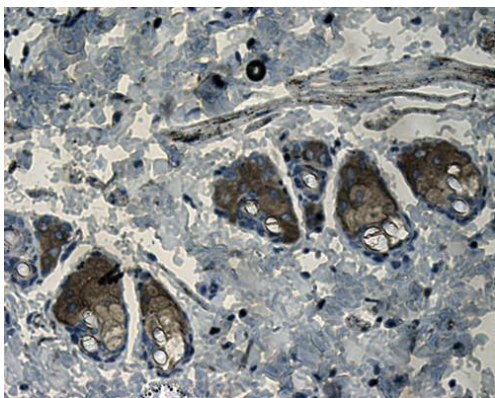
ARG22372 anti-CD206 / MMR antibody IHC-P image

Immunohistochemistry: Paraffin-embedded Rat skin tissue stained with ARG22372 anti-CD206 / MMR antibody at 1:200 dilution.



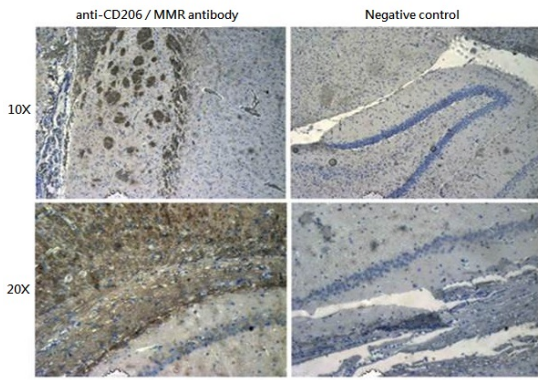
ARG22372 anti-CD206 / MMR antibody IHC-P image

Immunohistochemistry: Paraffin-embedded Rat skin tissue stained with ARG22372 anti-CD206 / MMR antibody at 1:100 dilution.



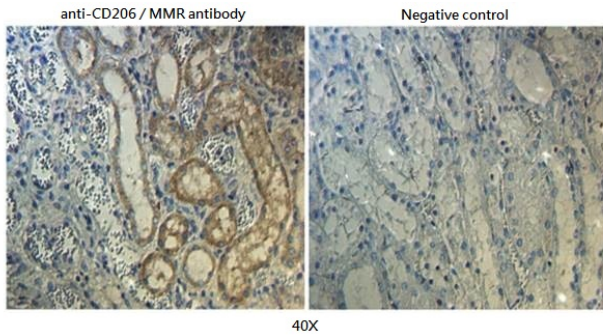
ARG22372 anti-CD206 / MMR antibody IHC-P image

Immunohistochemistry: Paraffin-embedded Rat kidney tissue stained with ARG22372 anti-CD206 / MMR antibody at 1:100 dilution.



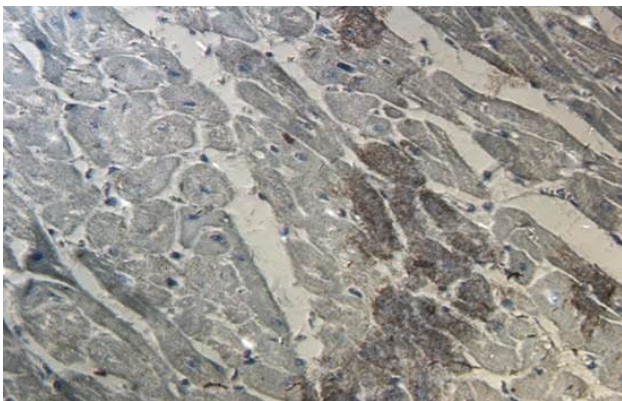
ARG22372 anti-CD206 / MMR antibody IHC-P image

Immunohistochemistry: Paraffin-embedded Rat brain tissue stained with ARG22372 anti-CD206 / MMR antibody at 1:200 dilution.



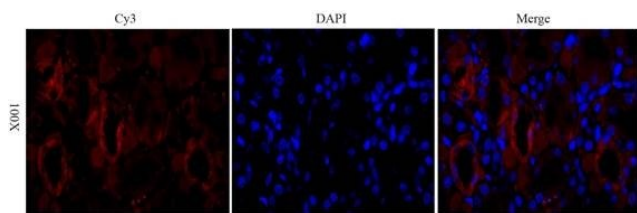
ARG22372 anti-CD206 / MMR antibody IHC-P image

Immunohistochemistry: Formalin-fixed and paraffin-embedded Pig kidney tissue stained with ARG22372 anti-CD206 / MMR antibody at 1:200 dilution.



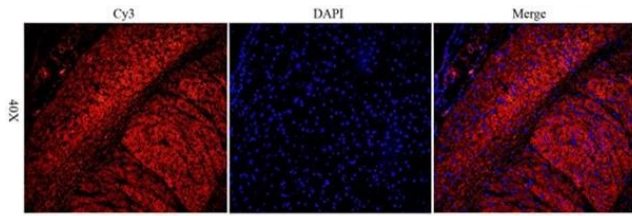
ARG22372 anti-CD206 / MMR antibody IHC-P image

Immunohistochemistry: Paraffin-embedded Pig heart tissue stained with ARG22372 anti-CD206 / MMR antibody at 1:200 dilution.



ARG22372 anti-CD206 / MMR antibody IHC-P image

Immunohistochemistry: Paraffin-embedded Rat kidney tissue stained with ARG22372 anti-CD206 / MMR antibody at 1:200 dilution.



ARG22372 anti-CD206 / MMR antibody IHC-P image

Immunohistochemistry: Paraffin-embedded Rat brain tissue stained with ARG22372 anti-CD206 / MMR antibody at 1:100 dilution.