

ARG22396
anti-HVEM / TR2 antibody [CW2]Package: 50 µg
Store at: -20°C

Summary

Product Description	Mouse Monoclonal antibody [CW2] recognizes HVEM / TR2
Tested Reactivity	Hu
Tested Application	ICC/IF, WB
Host	Mouse
Clonality	Monoclonal
Clone	CW2
Isotype	IgG1, kappa
Target Name	HVEM / TR2
Species	Human
Immunogen	Human HVEM / TR2
Conjugation	Un-conjugated
Alternate Names	Herpes virus entry mediator A; HVEM; Tumor necrosis factor receptor-like 2; HVEA; CD antigen CD270; CD270; Tumor necrosis factor receptor superfamily member 14; LIGHTR; HveA; Herpesvirus entry mediator A; ATAR; TR2

Application Instructions

Application table	Application	Dilution
	ICC/IF	Assay-dependent
	WB	10 µg/ml
Application Note	* The dilutions indicate recommended starting dilutions and the optimal dilutions or concentrations should be determined by the scientist.	

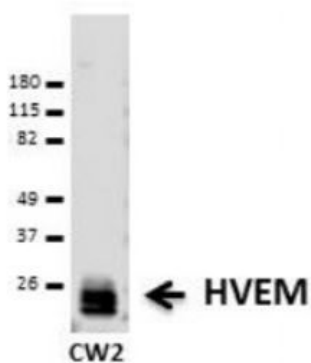
Properties

Form	Liquid
Purification	Purification with Protein G.
Buffer	PBS (pH 7.4)
Concentration	1 mg/ml
Storage instruction	For continuous use, store undiluted antibody at 2-8°C for up to a week. For long-term storage, aliquot and store at -20°C or below. Storage in frost free freezers is not recommended. Avoid repeated freeze/thaw cycles. Suggest spin the vial prior to opening. The antibody solution should be gently mixed before use.
Note	For laboratory research only, not for drug, diagnostic or other use.

Bioinformation

Database links	GeneID: 8764 Human Swiss-port # Q92956 Human
Gene Symbol	TNFRSF14
Gene Full Name	tumor necrosis factor receptor superfamily, member 14
Background	This gene encodes a member of the TNF (tumor necrosis factor) receptor superfamily. The encoded protein functions in signal transduction pathways that activate inflammatory and inhibitory T-cell immune response. It binds herpes simplex virus (HSV) viral envelope glycoprotein D (gD), mediating its entry into cells. Alternative splicing results in multiple transcript variants. [provided by RefSeq, Jul 2014]
Function	Receptor for BTLA. Receptor for TNFSF14/LIGHT and homotrimeric TNFSF1/lymphotoxin-alpha. Involved in lymphocyte activation. Plays an important role in HSV pathogenesis because it enhanced the entry of several wild-type HSV strains of both serotypes into CHO cells, and mediated HSV entry into activated human T-cells. [UniProt]
Highlight	Related products: HVEM antibodies ; HVEM ELISA Kits ; Anti-Mouse IgG secondary antibodies ; Related news: New PD-1 ELISA Kit, excellent for preclinical studies or pharmaceutical development Why anti-PD-1/PD-L1 therapy doesn't work? Time to fight cancer by NK cells
Calculated Mw	30 kDa
PTM	N-glycosylated.

Images



ARG22396 anti-HVEM / TR2 antibody [CW2] WB image

Western blot: 0.1 µg/cm of HVEM Recombinant Protein stained with ARG22396 anti-HVEM / TR2 antibody [CW2].