

ARG22474 anti-EMR1 F4 / 80 antibody [Cl:A3-1] (FITC)

Package: 50 µg
Store at: 4°C

Summary

Product Description	FITC-conjugated Rat Monoclonal antibody [Cl:A3-1] recognizes EMR1 F4 / 80 This antibody recognizes the murine F4 / 80 antigen, a 160 kD cell surface glycoprotein, member of the EGF-TM7 family.
Tested Reactivity	Ms
Tested Application	FACS, ICC/IF
Host	Rat
Clonality	Monoclonal
Clone	Cl:A3-1
Isotype	IgG2b
Target Name	EMR1 F4 / 80
Species	Mouse
Immunogen	Thioglycollate stimulated peritoneal macrophages from C57BL/6 mice.
Conjugation	FITC
Alternate Names	EGF-like module-containing mucin-like hormone receptor-like 1; EMR1 hormone receptor; EMR1; Adhesion G protein-coupled receptor E1; EGF-like module receptor 1; TM7LN3

Application Instructions

Application table	Application	Dilution
	FACS	Neat - 1:10
	ICC/IF	Assay-dependent
Application Note	FACS: Use 10ul of the suggested working dilution to label 10 ⁶ cells in 100ul * The dilutions indicate recommended starting dilutions and the optimal dilutions or concentrations should be determined by the scientist.	

Properties

Form	Liquid
Purification	Purification with Protein G.
Buffer	PBS, 0.09% Sodium azide and 1% BSA.
Preservative	0.09% Sodium azide
Stabilizer	1% BSA
Concentration	0.1 mg/ml
Storage instruction	Aliquot and store in the dark at 2-8°C. Keep protected from prolonged exposure to light. Avoid repeated freeze/thaw cycles. Suggest spin the vial prior to opening. The antibody solution should be

gently mixed before use.

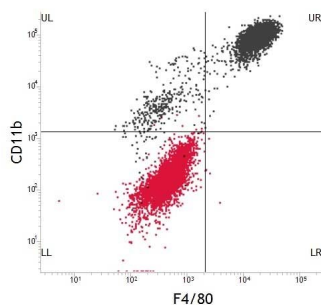
Note

For laboratory research only, not for drug, diagnostic or other use.

Bioinformation

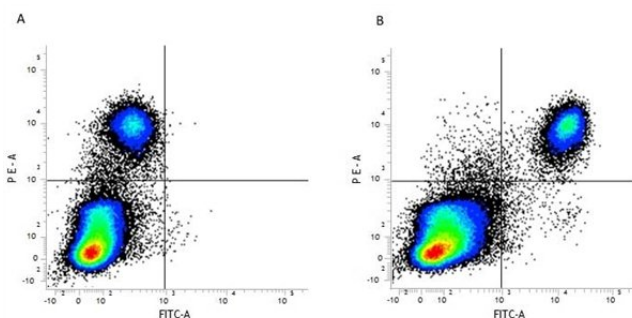
Gene Symbol	Adgre1
Gene Full Name	adhesion G protein-coupled receptor E1
Background	EMR1 F4/80 has a domain resembling seven transmembrane G protein-coupled hormone receptors (7TM receptors) at its C-terminus. The N-terminus of the encoded protein has six EGF-like modules, separated from the transmembrane segments by a serine/threonine-rich domain, a feature reminiscent of mucin-like, single-span, integral membrane glycoproteins with adhesive properties. Multiple alternatively spliced transcript variants encoding different isoforms have been found for this gene. [provided by RefSeq, Jan 2012]
Function	EMR1 F4/80: Orphan receptor involved in cell adhesion and probably in cell-cell interactions specifically involving cells of the immune system. May play a role in regulatory T-cells (Treg) development. [UniProt]
Highlight	Related products: EMR1 F4/80 antibodies ; EMR1 F4/80 Duos / Panels ; Anti-Rat IgG secondary antibodies ; Related news: Exploring Antiviral Immune Response
Research Area	Mouse Inflammatory Cell Marker antibody; Macrophage Marker antibody
Calculated Mw	98 kDa

Images



ARG22474 anti-EMR1 F4/80 antibody [Cl:A3-1] (FITC) FACS image

Flow Cytometry: FSC/SSC gated Mouse peritoneal macrophages dual stained with ARG22474 anti-EMR1 F4/80 antibody [Cl:A3-1] (FITC) at a 1:5 dilution and anti-CD11b at 1:5 dilution. Isotype control pair in red.



ARG22474 anti-EMR1 F4/80 antibody [Cl:A3-1] (FITC) FACS image

Flow Cytometry: Murine peritoneal macrophages. Figure A. RPE conjugated Mouse anti Mouse CD14 and FITC conjugated Rat IgG2b isotype control. Figure B. RPE conjugated Mouse anti Mouse CD14 and ARG22474 anti-EMR1 F4/80 antibody [Cl:A3-1] (FITC).