

## ARG22496 anti-CD49a / Integrin alpha 1 antibody [TS2/7] (FITC)

Package: 50 µg  
Store at: 4°C

### Summary

Product Description	FITC-conjugated Mouse Monoclonal antibody [TS2/7] recognizes CD49a / Integrin alpha 1 This antibody recognizes the human alpha 1 integrin sub-unit, which forms the VLA-1 heterodimer in association with the beta 1 integrin. VLA-1 is a receptor for collagen and laminin, and is expressed by chronically activated T cells, melanoma cells and smooth muscle cells.
Tested Reactivity	Hu
Tested Application	FACS
Host	Mouse
Clonality	Monoclonal
Clone	TS2/7
Isotype	IgG1
Target Name	CD49a / Integrin alpha 1
Species	Human
Immunogen	Human CTL line directed against HLA-DR.
Conjugation	FITC
Alternate Names	VLA-1; CD49a; Integrin alpha-1; Laminin and collagen receptor; VLA1; CD antigen CD49a; CD49 antigen-like family member A

### Application Instructions

Application table	Application	Dilution
	FACS	Neat - 1:10

**Application Note** FACS: Use 10ul of the suggested working dilution to label 10<sup>6</sup> cells in 100ul.  
\* The dilutions indicate recommended starting dilutions and the optimal dilutions or concentrations should be determined by the scientist.

### Properties

Form	Liquid
Purification	Purification with Protein G.
Buffer	PBS, 0.09% Sodium azide and 1% BSA.
Preservative	0.09% Sodium azide
Stabilizer	1% BSA
Concentration	0.1 mg/ml
Storage instruction	Aliquot and store in the dark at 2-8°C. Keep protected from prolonged exposure to light. Avoid repeated freeze/thaw cycles. Suggest spin the vial prior to opening. The antibody solution should be gently mixed before use.

Note

For laboratory research only, not for drug, diagnostic or other use.

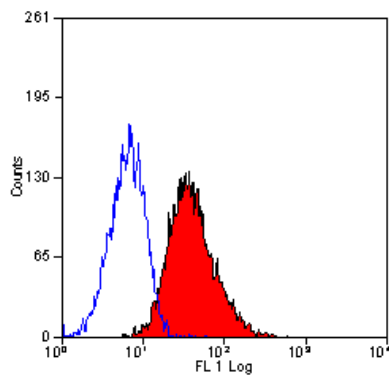
## Bioinformation

---

Gene Symbol	ITGA1
Gene Full Name	integrin, alpha 1
Background	This gene encodes the alpha 1 subunit of integrin receptors. This protein heterodimerizes with the beta 1 subunit to form a cell-surface receptor for collagen and laminin. The heterodimeric receptor is involved in cell-cell adhesion and may play a role in inflammation and fibrosis. The alpha 1 subunit contains an inserted (I) von Willebrand factor type I domain which is thought to be involved in collagen binding. [provided by RefSeq, Jul 2008]
Function	Integrin alpha-1/beta-1 is a receptor for laminin and collagen. It recognizes the proline-hydroxylated sequence G-F-P-G-E-R in collagen. Involved in anchorage-dependent, negative regulation of EGF-stimulated cell growth. [UniProt]
Calculated Mw	131 kDa

## Images

---



ARG22496 anti-CD49a / Integrin alpha 1 antibody [TS2/7] (FITC)  
FACS image

Flow Cytometry: HeLa cells stained with ARG22496 anti-CD49a /  
Integrin alpha 1 antibody [TS2/7] (FITC).