

## ARG22540 anti-KIR2D antibody [NKVFS1] (PE)

Package: 50 tests  
Store at: 4°C

### Summary

Product Description	PE-conjugated Mouse Monoclonal antibody [NKVFS1] recognizes KIR2D This antibody recognizes KIR2D members of the killer cell immunoglobulin (Ig)-like receptor (KIR) family, CD158a, CD158b and P50.3. KIR2D family members are cell surface glycoproteins with two Ig domains, which are expressed on natural killer cells and some T cells. Mouse anti Human KIR antibody, clone NKVFS1 recognizes the long and short forms CD158a and CD158b (KIR2DL, KIR2DS1 and KIR2DS2 respectively) and also p50.3 (KIR2DS4). Mouse anti Human KIR antibody, clone NKVFS1 is reported to have functional activity, activating NK cell cytotoxicity via KIR2DS and inhibiting via KIR2DL forms..
Tested Reactivity	Hu
Tested Application	FACS
Host	Mouse
Clonality	Monoclonal
Clone	NKVFS1
Isotype	IgG1
Target Name	KIR2D
Species	Human
Conjugation	PE
Alternate Names	KIR2DP1DL1; KIR2DS4; p50.1; Killer cell immunoglobulin-like receptor 2DS1; CD158a; CD158H; CD antigen CD158h; CD158 antigen-like family member H; MHC class I NK cell receptor Eb6 ActI

### Application Instructions

Application table	<table> <tr> <th>Application</th><th>Dilution</th></tr> <tr> <td>FACS</td><td>1:50 - 1:100</td></tr> </table>	Application	Dilution	FACS	1:50 - 1:100
Application	Dilution				
FACS	1:50 - 1:100				
Application Note	<p>FACS: Use 10ul of the suggested working dilution to label 10<sup>6</sup> cells in 100ul.</p> <p>* The dilutions indicate recommended starting dilutions and the optimal dilutions or concentrations should be determined by the scientist.</p>				

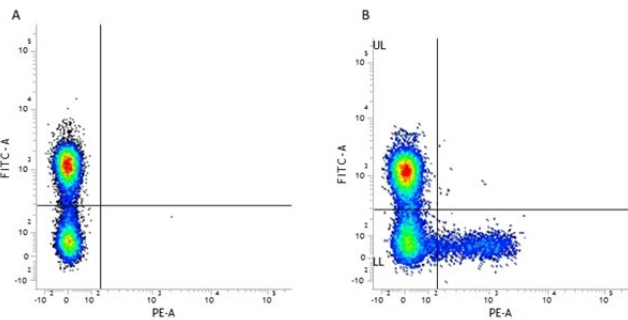
### Properties

Form	Liquid
Purification	Purification with Protein G.
Buffer	PBS, 0.09% Sodium azide, 1% BSA and 5% Sucrose.
Preservative	0.09% Sodium azide
Stabilizer	1% BSA and 5% Sucrose
Storage instruction	Aliquot and store in the dark at 2-8°C. Keep protected from prolonged exposure to light. Avoid repeated freeze/thaw cycles. Suggest spin the vial prior to opening. The antibody solution should be gently mixed before use.

Bioinformation

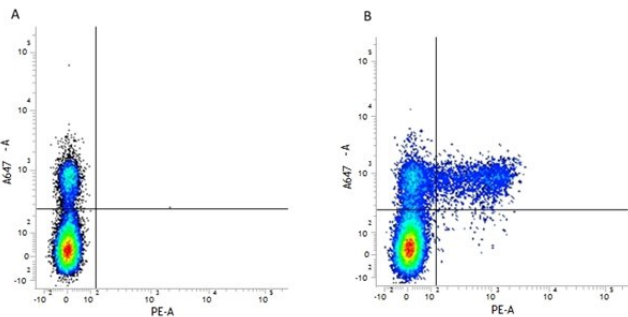
Gene Symbol	KIR2DS1
Gene Full Name	killer cell immunoglobulin-like receptor, two domains, short cytoplasmic tail, 1
Background	Killer cell immunoglobulin-like receptors (KIRs) are transmembrane glycoproteins expressed by natural killer cells and subsets of T cells. The KIR genes are polymorphic and highly homologous and they are found in a cluster on chromosome 19q13.4 within the 1 Mb leukocyte receptor complex (LRC). The gene content of the KIR gene cluster varies among haplotypes, although several "framework" genes are found in all haplotypes (KIR3DL3, KIR3DP1, KIR3DL4, KIR3DL2). The KIR proteins are classified by the number of extracellular immunoglobulin domains (2D or 3D) and by whether they have a long (L) or short (S) cytoplasmic domain. KIR proteins with the long cytoplasmic domain transduce inhibitory signals upon ligand binding via an immune tyrosine-based inhibitory motif (ITIM), while KIR proteins with the short cytoplasmic domain lack the ITIM motif and instead associate with the TYRO protein tyrosine kinase binding protein to transduce activating signals. The ligands for several KIR proteins are subsets of HLA class I molecules; thus, KIR proteins are thought to play an important role in regulation of the immune response. [provided by RefSeq, Jul 2008]
Function	Receptor on natural killer (NK) cells for HLA-C alleles. Does not inhibit the activity of NK cells. [UniProt]
Calculated Mw	34 kDa

Images



ARG22540 anti-KIR2D antibody [NKVFS1] (PE) FACS image

Flow Cytometry: Figure A. FITC conjugated Mouse anti Human CD3 and PE-conjugated Mouse IgG1 isotype control. Figure B. FITC conjugated Mouse anti Human CD3 and ARG22540 anti-KIR2D antibody [NKVFS1] (PE). All experiments performed on red cell lysed Human peripheral blood gated on lymphocytes.



ARG22540 anti-KIR2D antibody [NKVFS1] (PE) FACS image

Flow Cytometry: Figure A. Alexa647® conjugated Mouse anti Human CD56 and PE-conjugated Mouse IgG1 isotype control. Figure B. Alexa647® conjugated Mouse anti Human CD56 and ARG22540 anti-KIR2D antibody [NKVFS1] (PE). All experiments performed on red cell lysed Human peripheral blood gated on lymphocytes.