

## ARG22544 anti-CD209 / DC-SIGN antibody [MR-1] (low endotoxin)

Package: 250 µg  
Store at: -20°C

### Summary

Product Description	Azide free and low endotoxin Mouse Monoclonal antibody [MR-1] recognizes CD209 / DC-SIGN. This antibody recognizes human DC-specific ICAM-3 grabbing nonintegrin (DC-SIGN), a ~45 kDa C-type lectin that binds ICAM-3 also known as CD209. CD209 is primarily expressed on a population of immature dendritic cells in peripheral tissues and on immature myeloid monocyte-derived DC's in vitro. CD209 is involved in dendritic cell (DC) migration and the initial interaction between DC's and naive T lymphocytes. CD209 also binds HIV-1 gp120 and plays a key role in the dissemination of HIV-1 by DC's. Mouse anti Human CD209 antibody, clone MR-1 is reported to partially block the functional activity of DC-SIGN (Melero et al.).
Tested Reactivity	Hu
Tested Application	FACS, FuncSt, ICC/IF
Host	Mouse
Clonality	Monoclonal
Clone	MR-1
Isotype	IgG1
Target Name	CD209 / DC-SIGN
Species	Human
Immunogen	Immature myeloid monocyte-derived dendritic cells (MDDCs).
Conjugation	Un-conjugated
Alternate Names	CDSIGN; Dendritic cell-specific ICAM-3-grabbing non-integrin 1; CLEC4L; DC-SIGN; CD antigen CD209; CD209 antigen; DC-SIGN1; C-type lectin domain family 4 member L

### Application Instructions

Application table	Application	Dilution
	FACS	Neat - 1:10
	FuncSt	Assay-dependent
	ICC/IF	Assay-dependent
Application Note	FACS: Use 10ul of the suggested working dilution to label 10 <sup>6</sup> cells in 100ul. * The dilutions indicate recommended starting dilutions and the optimal dilutions or concentrations should be determined by the scientist.	

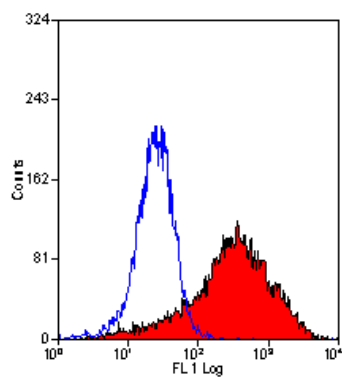
### Properties

Form	Liquid
Purification	Purification with Protein A.
Purification Note	Low endotoxin

Buffer	PBS
Concentration	1 mg/ml
Storage instruction	For continuous use, store undiluted antibody at 2-8°C for up to a week. For long-term storage, aliquot and store at -20°C or below. Storage in frost free freezers is not recommended. Avoid repeated freeze/thaw cycles. Suggest spin the vial prior to opening. The antibody solution should be gently mixed before use.
Note	For laboratory research only, not for drug, diagnostic or other use.

## Bioinformation

Gene Symbol	CD209
Gene Full Name	CD209 molecule
Background	<p>This gene encodes a transmembrane receptor and is often referred to as DC-SIGN because of its expression on the surface of dendritic cells and macrophages. The encoded protein is involved in the innate immune system and recognizes numerous evolutionarily divergent pathogens ranging from parasites to viruses with a large impact on public health. The protein is organized into three distinct domains: an N-terminal transmembrane domain, a tandem-repeat neck domain and C-type lectin carbohydrate recognition domain. The extracellular region consisting of the C-type lectin and neck domains has a dual function as a pathogen recognition receptor and a cell adhesion receptor by binding carbohydrate ligands on the surface of microbes and endogenous cells. The neck region is important for homo-oligomerization which allows the receptor to bind multivalent ligands with high avidity. Variations in the number of 23 amino acid repeats in the neck domain of this protein are rare but have a significant impact on ligand binding ability. This gene is closely related in terms of both sequence and function to a neighboring gene (GeneID 10332; often referred to as L-SIGN). DC-SIGN and L-SIGN differ in their ligand-binding properties and distribution. Alternative splicing results in multiple variants.[provided by RefSeq, Feb 2009]</p>
Function	<p>Pathogen-recognition receptor expressed on the surface of immature dendritic cells (DCs) and involved in initiation of primary immune response. Thought to mediate the endocytosis of pathogens which are subsequently degraded in lysosomal compartments. The receptor returns to the cell membrane surface and the pathogen-derived antigens are presented to resting T-cells via MHC class II proteins to initiate the adaptive immune response. Probably recognizes in a calcium-dependent manner high mannose N-linked oligosaccharides in a variety of pathogen antigens, including HIV-1 gp120, HIV-2 gp120, SIV gp120, ebolavirus glycoproteins, cytomegalovirus gB, HCV E2, dengue virus gE, Leishmania pifanoi LPG, Lewis-x antigen in Helicobacter pylori LPS, mannose in Klebsiella pneumoniae LPS, di-mannose and tri-mannose in Mycobacterium tuberculosis ManLAM and Lewis-x antigen in Schistosoma mansoni SEA.</p> <p>On DCs it is a high affinity receptor for ICAM2 and ICAM3 by binding to mannose-like carbohydrates. May act as a DC rolling receptor that mediates transendothelial migration of DC presursors from blood to tissues by binding endothelial ICAM2. Seems to regulate DC-induced T-cell proliferation by binding to ICAM3 on T-cells in the immunological synapse formed between DC and T-cells. [UniProt]</p>
Calculated Mw	46 kDa



ARG22544 anti-CD209 / DC-SIGN antibody [MR-1] (low endotoxin)  
FACS image

Flow Cytometry: CD209 transfected K562 cells stained with  
ARG22544 anti-CD209 / DC-SIGN antibody [MR-1] (low endotoxin).