

ARG22546 anti-NCR1 antibody [AKS1]

Package: 50 µg
Store at: -20°C

Summary

Product Description	Mouse Monoclonal antibody [AKS1] recognizes NCR1 This antibody recognizes bovine CD335, also known as Nkp46 and Natural cytotoxicity triggering receptor 1. CD335 is a type I transmembrane protein, with two extracellular C2-type immunoglobulin-like domains, which functions as an activating receptor. CD335 is expressed by human natural killer cells (Sivori et al. 1997). The bovine homologue is expressed on bovine NK cells (Storset et al. 2004) and no expression of CD335 has been detected on B cells, T cells, monocytes or granulocytes. Clone AKS1 is reported to activate lysis of FcγR-expressing cell line P815, by IL-2 activated Nkp46+ cells (Storset et al. 2004).
Tested Reactivity	Bov
Tested Application	FACS, ICC/IF, WB
Host	Mouse
Clonality	Monoclonal
Clone	AKS1
Isotype	IgG1
Target Name	NCR1
Species	Bovine
Immunogen	Fusion protein consisting of the extracellular region of bovine CD335.
Conjugation	Un-conjugated
Alternate Names	CD antigen CD335; Natural killer cell p46-related protein; Lymphocyte antigen 94 homolog; Natural cytotoxicity triggering receptor 1; hNkp46; NKP46; NKp46; NK cell-activating receptor; LY94; CD335; NK-p46

Application Instructions

Application table	Application	Dilution
	FACS	Neat
	ICC/IF	Assay-dependent
	WB	Assay-dependent
Application Note	FACS: Use 10ul of the suggested working dilution to label 10 ⁶ cells in 100ul. * The dilutions indicate recommended starting dilutions and the optimal dilutions or concentrations should be determined by the scientist.	

Properties

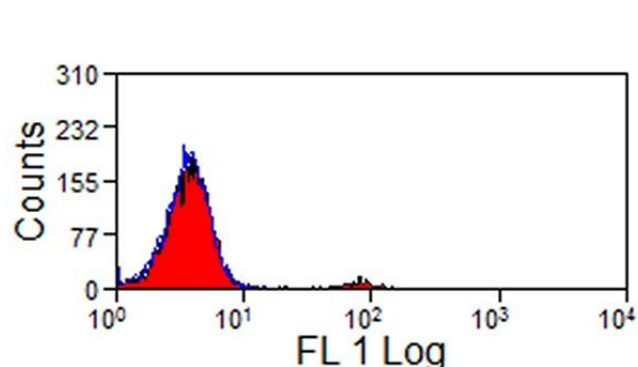
Form	Liquid
Purification	Purification with Protein G.
Buffer	PBS and 0.09% Sodium azide

Preservative	0.09% Sodium azide
Concentration	1 mg/ml
Storage instruction	For continuous use, store undiluted antibody at 2-8°C for up to a week. For long-term storage, aliquot and store at -20°C or below. Storage in frost free freezers is not recommended. Avoid repeated freeze/thaw cycles. Suggest spin the vial prior to opening. The antibody solution should be gently mixed before use.
Note	For laboratory research only, not for drug, diagnostic or other use.

Bioinformation

Gene Symbol	NCR1
Gene Full Name	natural cytotoxicity triggering receptor 1
Function	Cytotoxicity-activating receptor that may contribute to the increased efficiency of activated natural killer (NK) cells to mediate tumor cell lysis. [UniProt]
Calculated Mw	34 kDa
PTM	N-glycosylated. O-glycosylated.

Images



ARG22546 anti-NCR1 antibody [AKS1] FACS image

Flow Cytometry: Bovine peripheral blood lymphocytes stained with ARG22546 anti-NCR1 antibody [AKS1] followed by Goat anti Mouse IgG (H/L) (FITC). A small positive peak representing NK cells can be identified.