

ARG22550 anti-CD223 / LAG3 antibody [C9B7W]

Package: 100 µg

Store at: -20°C

Summary

Product Description	<p>Rat Monoclonal antibody [C9B7W] recognizes CD223 / LAG3</p> <p>This antibody recognizes murine lymphocyte activation gene-3 (LAG-3), a ~70 kDa activation-induced cell surface molecule that is also referred to as CD223. Murine CD223 is expressed on activated CD4 positive and CD8 positive alpha/beta T lymphocytes and a subset of natural killer (NK) cells. CD223 binds to MHC class II molecules with high affinity and is reported to negatively regulate T cell homeostasis and T cell expansion. Clone C9B7W recognizes an epitope within the D2 domain of CD223. Rat anti Mouse CD223 antibody, clone C9B7W is reported to block the in vitro function of murine LAG-3 but does not block binding of LAG-3 to MHC class II (Workman et al. 2002).</p>
Tested Reactivity	Ms
Tested Application	CyTOF®-candidate, FACS
Host	Rat
Clonality	Monoclonal
Clone	C9B7W
Isotype	IgG1
Target Name	CD223 / LAG3
Species	Mouse
Immunogen	Murine CD223 Ig fusion protein.
Conjugation	Un-conjugated
Alternate Names	CD antigen CD223; CD223; Protein FDC; Lymphocyte activation gene 3 protein; LAG-3

Application Instructions

Application table	Application	Dilution
	CyTOF®-candidate	Assay-dependent
	FACS	Neat - 1:5
Application Note	FACS: Use 10ul of the suggested working dilution to label 10 ⁶ cells in 100ul. * The dilutions indicate recommended starting dilutions and the optimal dilutions or concentrations should be determined by the scientist.	

Properties

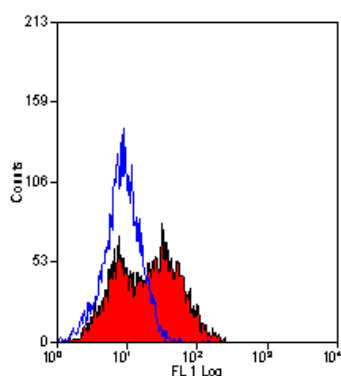
Form	Liquid
Purification	Purification with Protein G.
Buffer	PBS and 0.09% Sodium azide
Preservative	0.09% Sodium azide
Concentration	1 mg/ml

Storage instruction	For continuous use, store undiluted antibody at 2-8°C for up to a week. For long-term storage, aliquot and store at -20°C or below. Storage in frost free freezers is not recommended. Avoid repeated freeze/thaw cycles. Suggest spin the vial prior to opening. The antibody solution should be gently mixed before use.
Note	For laboratory research only, not for drug, diagnostic or other use.

Bioinformation

Gene Symbol	Lag3
Gene Full Name	lymphocyte-activation gene 3
Background	Lymphocyte-activation protein 3 belongs to Ig superfamily and contains 4 extracellular Ig-like domains. The LAG3 gene contains 8 exons. The sequence data, exon/intron organization, and chromosomal localization all indicate a close relationship of LAG3 to CD4. [provided by RefSeq, Jul 2008]
Function	Involved in lymphocyte activation. Binds to HLA class-II antigens. [UniProt]
Highlight	Related products: CD223 antibodies ; Anti-Rat IgG secondary antibodies ; Related news: CyTOF-candidate Antibodies
Calculated Mw	57 kDa

Images



ARG22550 anti-CD223 / LAG3 antibody [C9B7W] FACS image

Flow Cytometry: CD223 transfected cells stained with ARG22550 anti-CD223 / LAG3 antibody [C9B7W].