

ARG22553 anti-CD62P / P-Selectin antibody [Psel.KO.2.7]

Package: 100 µg
Store at: -20°C

Summary

Product Description	Mouse Monoclonal antibody [Psel.KO.2.7] recognizes CD62P / P-Selectin This antibody recognizes human P-Selectin. CD62P is a ~140 kDa surface antigen expressed by activated platelets and endothelial cells, and plays an important role in adhesive processes between leucocytes and endothelial cells.
Tested Reactivity	Hu, Ms, Rat, Bov, Cat, Goat, Hrs, Sheep
Tested Application	FACS, IHC-Fr, IP
Host	Mouse
Clonality	Monoclonal
Clone	Psel.KO.2.7
Isotype	IgG1
Target Name	CD62P / P-Selectin
Species	Human
Immunogen	P-selectin transfected 300.19 cells.
Conjugation	Un-conjugated
Alternate Names	PADGEM; Platelet activation dependent granule-external membrane protein; CD62 antigen-like family member P; Granule membrane protein 140; CD antigen CD62P; Leukocyte-endothelial cell adhesion molecule 3; GMP-140; P-selectin; LECAM3

Application Instructions

Application table	Application	Dilution
	FACS	Neat
	IHC-Fr	Assay-dependent
	IP	Assay-dependent
Application Note	FACS: Use 10ul of the suggested working dilution to label 10 ⁶ cells in 100ul. * The dilutions indicate recommended starting dilutions and the optimal dilutions or concentrations should be determined by the scientist.	

Properties

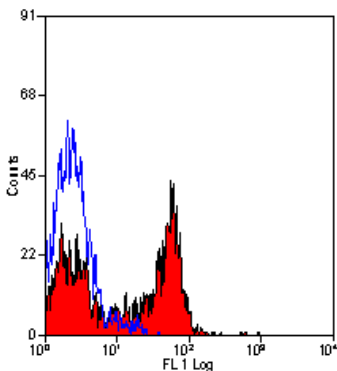
Form	Liquid
Purification	Purification with Protein A.
Buffer	PBS and 0.09% Sodium azide
Preservative	0.09% Sodium azide
Concentration	1 mg/ml

Storage instruction	For continuous use, store undiluted antibody at 2-8°C for up to a week. For long-term storage, aliquot and store at -20°C or below. Storage in frost free freezers is not recommended. Avoid repeated freeze/thaw cycles. Suggest spin the vial prior to opening. The antibody solution should be gently mixed before use.
Note	For laboratory research only, not for drug, diagnostic or other use.

Bioinformation

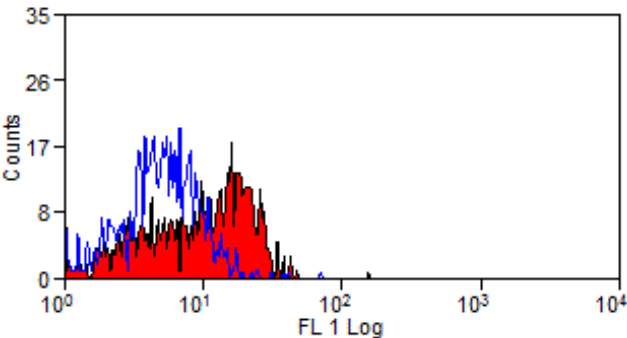
Gene Symbol	SELP
Gene Full Name	selectin P (granule membrane protein 140kDa, antigen CD62)
Function	Ca(2+)-dependent receptor for myeloid cells that binds to carbohydrates on neutrophils and monocytes. Mediates the interaction of activated endothelial cells or platelets with leukocytes. The ligand recognized is sialyl-Lewis X. Mediates rapid rolling of leukocyte rolling over vascular surfaces during the initial steps in inflammation through interaction with PSGL1 (By similarity). [UniProt]
Calculated Mw	~ 140 kDa

Images



ARG22553 anti-CD62P / P-Selectin antibody [Psel.KO.2.7] FACS image

Flow Cytometry: thrombin activated Human platelets stained with ARG22553 anti-CD62P / P-Selectin antibody [Psel.KO.2.7].



ARG22553 anti-CD62P / P-Selectin antibody [Psel.KO.2.7] FACS image

Flow Cytometry: Thrombin activated Dog platelets stained with ARG22553 anti-CD62P / P-Selectin antibody [Psel.KO.2.7] followed by goat anti Mouse IgG (FITC).