

ARG22594 anti-Siglec 5 + Siglec 14 antibody [1A5]

Package: 50 µg
Store at: -20°C

Summary

Product Description	Mouse Monoclonal antibody [1A5] recognizes Siglec 5 + Siglec 14
Tested Reactivity	Hu, Chimp
Tested Application	CyTOF®-candidate, ELISA, FACS, ICC/IF, IP
Host	Mouse
Clonality	Monoclonal
Clone	1A5
Isotype	IgG1
Target Name	Siglec 5 + Siglec 14
Species	Human
Immunogen	Siglec-5-Fc protein, consisting of the full-length extracellular region of human Siglec-5, fused with the Fc region of human IgG1.
Conjugation	Un-conjugated
Alternate Names	Sialic acid-binding Ig-like lectin 14; Siglec-14

Application Instructions

Application table	Application	Dilution
	CyTOF®-candidate	Assay-dependent
	ELISA	Assay-dependent
	FACS	1:25 - 1:200
	ICC/IF	Assay-dependent
	IP	Assay-dependent
Application Note	FACS: Use 10ul of the suggested working dilution to label 10 ⁶ cells. * The dilutions indicate recommended starting dilutions and the optimal dilutions or concentrations should be determined by the scientist.	

Properties

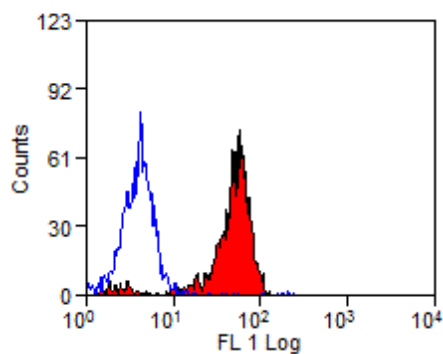
Form	Liquid
Purification	Purification with Protein G.
Buffer	PBS and 0.09% Sodium azide
Preservative	0.09% Sodium azide
Concentration	1 mg/ml

Storage instruction	For continuous use, store undiluted antibody at 2-8°C for up to a week. For long-term storage, aliquot and store at -20°C or below. Storage in frost free freezers is not recommended. Avoid repeated freeze/thaw cycles. Suggest spin the vial prior to opening. The antibody solution should be gently mixed before use.
Note	For laboratory research only, not for drug, diagnostic or other use.

Bioinformation

Gene Symbol	SIGLEC14
Gene Full Name	sialic acid binding Ig-like lectin 14
Function	Putative adhesion molecule. Sialic acid-binding paired receptor which may activate associated receptors. [UniProt]
Highlight	Related products: Siglec antibodies ; Siglec ELISA Kits ; Siglec Duos / Panels ; Anti-Mouse IgG secondary antibodies ; Related news: CyTOF-candidate Antibodies
Calculated Mw	44 kDa

Images



ARG22594 anti-Siglec 5 + Siglec 14 antibody [1A5] FACS image

Flow Cytometry: Human peripheral blood monocytes stained with ARG22594 anti-Siglec 5 + Siglec 14 antibody [1A5] followed by rabbit F(ab')₂ anti Mouse IgG (FITC).