

## ARG22640 anti-CD11R1 antibody [MIL4]

Package: 50 µg

Store at: -20°C

### Summary

Product Description	<p>Mouse Monoclonal antibody [MIL4] recognizes CD11R1</p> <p>This antibody recognizes Porcine cell surface antigen classified as CD11R1 at the Third International Workshop on Swine Leukocyte Differentiation Antigens (Haverson et al. 2001). Clone MIL4 stains Porcine eosinophils, a subset of neutrophils and NK cells, it does not stain monocytes or macrophages (Haverson et al. 1994).</p> <p>Mouse anti Pig CD11R1, clone MIL4 immunoprecipitates a band corresponding to integrin β2 (CD18) of ~95kDa, in common with all other anti CD11 antibodies tested at the workshop and also a band of ~165 kDa corresponding to CD11R1, in a manner identical to the cross reactive anti Human CD11b clone, TMG6-5 from peripheral blood mononuclear cell lysates suggesting that Porcine CD11R1 is analogous to Human CD11b (Dominguez et al. 2001) Mouse anti Pig CD11R1, clone MIL4 is cross reactive with the guinea Pig and is useful for the identification of a population of guinea Pig natural killer cells, Kurloff cells (Takizawa et al. 2004) (Eremin et al. 1980).</p>
Tested Reactivity	Hu, Gpig, Pig
Tested Application	FACS, IHC-Fr, IP
Host	Mouse
Clonality	Monoclonal
Clone	MIL4
Isotype	IgG1
Target Name	CD11R1
Species	Pig
Immunogen	Porcine Lamina Propria Leucocytes.
Conjugation	Un-conjugated

### Application Instructions

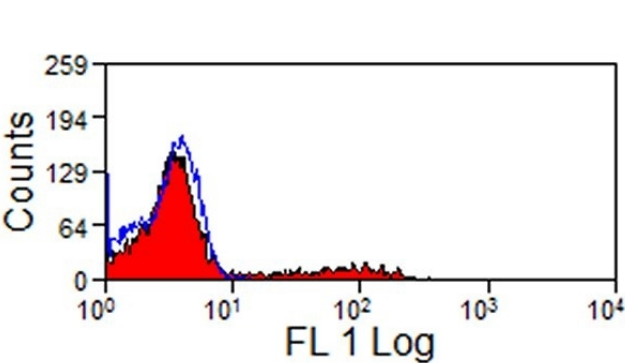
Application table	Application	Dilution
	FACS	1:25 - 1:200
	IHC-Fr	Assay-dependent
	IP	Assay-dependent
Application Note	<p>FACS: Use 10 µl of the suggested working dilution to label 10<sup>6</sup> cells in 100 µl.</p> <p>* The dilutions indicate recommended starting dilutions and the optimal dilutions or concentrations should be determined by the scientist.</p>	

### Properties

Form	Liquid
Purification	Purification with Protein A.
Buffer	PBS and 0.09% Sodium azide.

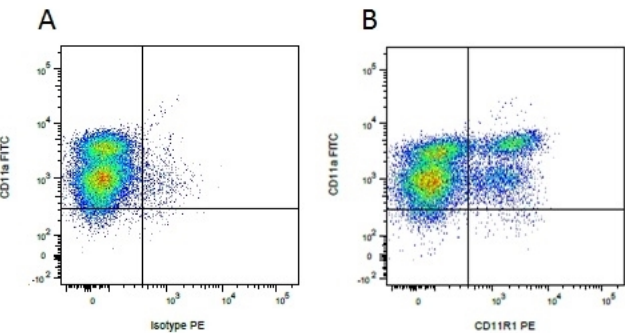
Preservative	0.09% Sodium azide
Concentration	1 mg/ml
Storage instruction	For continuous use, store undiluted antibody at 2-8°C for up to a week. For long-term storage, aliquot and store at -20°C or below. Storage in frost free freezers is not recommended. Avoid repeated freeze/thaw cycles. Suggest spin the vial prior to opening. The antibody solution should be gently mixed before use.
Note	For laboratory research only, not for drug, diagnostic or other use.

Images



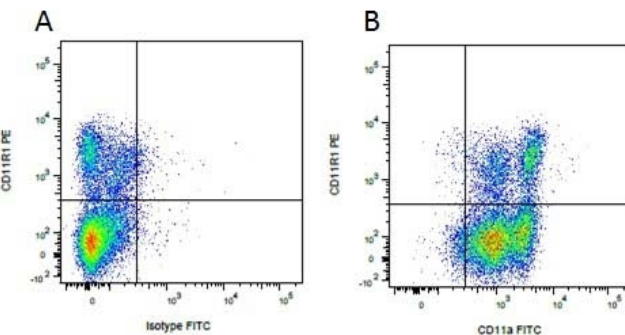
ARG22640 anti-CD11R1 antibody [MIL4] FACS image

Flow Cytometry: Pig peripheral blood lymphocytes stained with ARG22640 anti-CD11R1 antibody [MIL4] followed by Goat anti-Mouse IgG (FITC).



ARG22640 anti-CD11R1 antibody [MIL4] FACS image

Flow Cytometry: Figure A. anti-Porcine CD11a (FITC) and Mouse IgG1 isotype control detected with Goat anti-mouse IgG1 (RPE). Figure B. anti-Porcine CD11a (FITC) and ARG22640 anti-CD11R1 antibody [MIL4] detected with Goat anti-mouse IgG1 (RPE). All experiments performed on red cell lysed Porcine blood gated on mononuclear cells.



ARG22640 anti-CD11R1 antibody [MIL4] FACS image

Flow Cytometry: Figure A. ARG22640 anti-CD11R1 antibody [MIL4] detected with Goat anti Mouse IgG (RPE) and Mouse IgG2b isotype control (FITC). Figure B. ARG22640 anti-CD11R1 antibody [MIL4] detected with Goat anti-mouse IgG1 (RPE) and Mouse anti-Porcine CD11a (FITC). All experiments performed on red cell lysed Porcine blood gated on mononuclear cells.